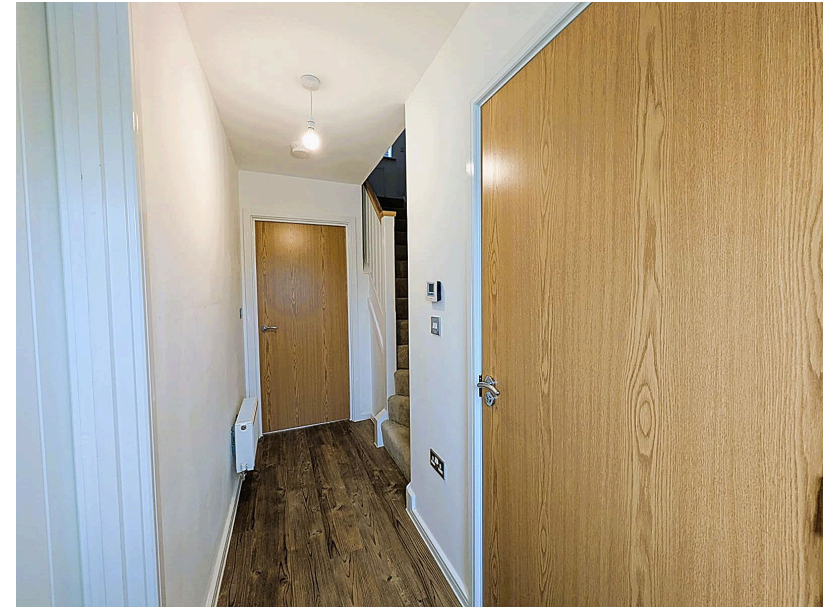




# 8 Bank Mill Close, Oldham, OL9 9GF


£380,000


🛏 3 🚿 2 🚗 0




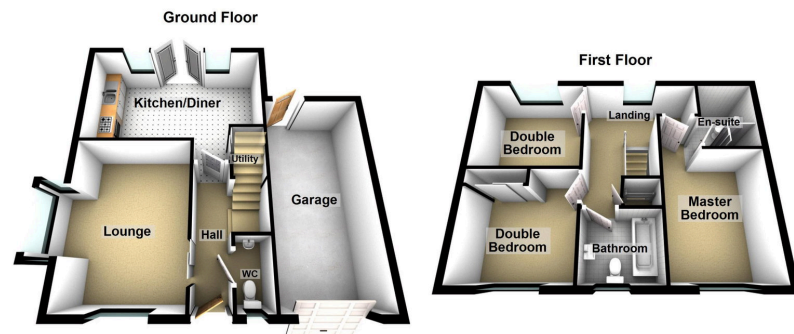
- NO VENDOR CHAIN
- Three Double Bedrooms (Master with en-suite)
- Immaculately Presented
- Double Driveway & Integral Garage
- Detached Property
- Virtually Brand New
- Contemporary Feel
- EPC Rating - B




 An Exceptional Family Home on One of the Development's Finest Plots - available for sale with NO VENDOR CHAIN.

 Perfectly positioned on a sought-after corner plot overlooking open green space, this beautifully presented Three Double Bedroom Detached property offers a rare blend of tranquillity, light, and modern luxury - all within easy reach of Manchester's vibrant centre.

 Step inside and the home immediately impresses with its natural light and refined finish. A well proportioned Lounge provides an elegant yet cosy retreat, while to the rear, the heart of the home unfolds into a contemporary Kitchen and dining space designed for both everyday living and effortless entertaining. Skylights flood the room with daylight, while sleek integrated appliances and thoughtful upgrades elevate the space.



Energy Efficiency Rating		
	Current	Potential
Very energy efficient - lower running costs		
(92 plus) <b>A</b>		95
(81-91) <b>B</b>	84	
(69-80) <b>C</b>		
(55-68) <b>D</b>		
(39-54) <b>E</b>		
(21-38) <b>F</b>		
(1-20) <b>G</b>		
Not energy efficient - higher running costs		
<b>England &amp; Wales</b>	EU Directive 2002/91/EC	

**Chadderton Office**

509 Middleton Road,  
Chadderton, Oldham,  
OL9 9SH

chadderton@kirkham-property.co.uk  
t: 0161 626 5688