



St. Georges Drive
London, SW1V

CHESTERTONS





Situated within an elegant stucco-fronted building in Pimlico's prestigious grid, this beautifully presented split-level apartment offers three bedrooms and two bathrooms, and has been thoughtfully designed and furnished throughout.

The property features a spacious reception and dining area, ideal for both relaxing and entertaining, with direct access to a private patio. There is also a separate, fully fitted kitchen. The apartment comprises three well-proportioned bedrooms, including a principal bedroom with its own en-suite bathroom, providing added comfort and privacy.

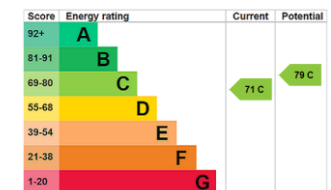
Further enhancing the property are three private patios, offering peaceful outdoor spaces to unwind. Additional benefits include a separate utility room, the property also has been designed with built in storage throughout, including under the stairs and extra cupboard space in the vault.

Offered chain-free, the property allows for a smooth and straightforward purchase process.

St Georges Drive is superbly positioned within Pimlico grid allowing for convenient access to a superb range of shops, cafes and restaurants. The nearest transport can be found at Victoria (Victoria, District and Circle lines, mainline station and Gatwick Express)

- Elegant stucco-fronted building set within Pimlico's prestigious grid
- Beautifully presented split-level apartment with three bedrooms and two bathrooms
- Spacious reception and dining area with access to a private patio
- Separate fully fitted kitchen and principal bedroom with en-suite
- Three private patios and additional separate utility room
- Chain-free and ideally located near shops, cafés, restaurants, and Victoria Station

Asking Price £1,325,000



Tenure: Leasehold - 125 years from 1 January 1997
Service Charge: £5,300 Per Annum (Including £1,800 Reserve Fund)
Ground Rent: £200 Per Annum
Local Authority: Westminster
Council Tax Band: G

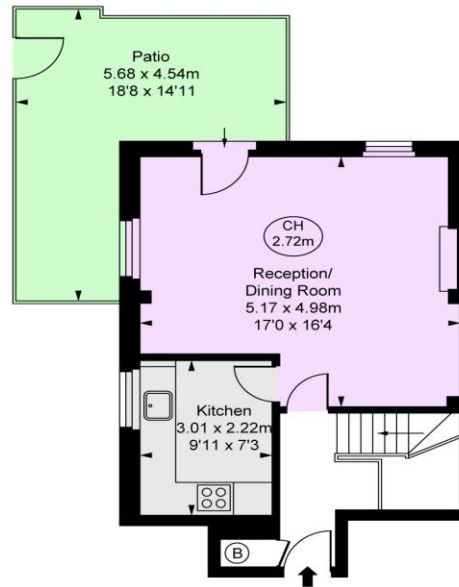
Chestertons Westminster & Pimlico Sales

105 Wilton Road
 London
 SW1V 1DZ
 westminster@chestertons.co.uk
 020 3040 8201
 chestertons.co.uk

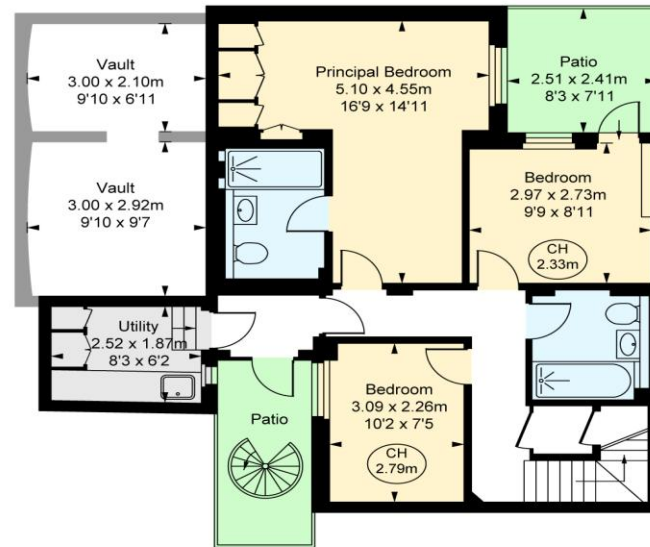
St. Georges Drive, SW1V

Approximate Gross Internal Area
 99.21 sq m / 1,068 sq ft
 Vault
 15.75 sq m / 170 sq ft
Total Areas Shown on Plan
 114.95 sq m / 1,238 sq ft

(CH = Ceiling Heights)



Raised Ground Floor
 Approximate Gross Internal Area
 38.57 sq m / 415 sq ft



Lower Ground Floor
 Approximate Gross Internal Area
 60.64 sq m / 653 sq ft



This plan is not to a given scale. A detailed layout plan to scale for valuation is available on request. All measurements and areas are within 1% tolerance and have been prepared in accordance with industry standards as defined in the RICS Code of Measuring Practice.
 © Fulham Performance

Chesterton UK Services Limited trading as Chestertons for themselves and for the vendor of this property whose agents they are, give notice that (i) these particulars do not constitute any part of an offer or contract, (ii) all statements contained within these particulars are made without responsibility on the part of Chestertons or the vendor, (iii) whilst made in good faith, none of the statements contained within these particulars are to be relied upon as a statement or representation of fact, (iv) any intending purchasers must satisfy themselves by inspection or otherwise as to the correctness of each of the statements contained within these particulars, (v) the vendor does not make or give either Chestertons or any person in their employment any authority to make or give representation or warranty whatsoever in relation to this property. Wide angle lenses may be used. ©Copyright Chestertons | Chesterton UK Services Limited | Registered Office 40 Connaught Street, Hyde Park, London W2 2AB Registered Company Number 05334580.



This paper is 100% recyclable