



# Pendleton Road, Redhill

£1,200,000





Pencroft is a great family home with warm, quirky character and full of interesting features. It is nestled in a fabulous location, opposite beautiful Earlswood Common and perfectly positioned at an equal distance between Reigate and Redhill. This makes it a very special house that offers charm, convenience and a truly perfect setting for family life.





Positioned just off the ever popular Pendleton Road, this beautifully renovated period home strikes that difficult balance between character and modern living, offering an enormous amount of charm whilst still feeling incredibly practical for family life. Set opposite Earlswood Common and equidistant to both Redhill and Reigate town centres, the location is ideal for those wanting easy access to shops, stations, schools and green space, all within walking distance.

The house itself has been extensively improved by the current owners and is presented in immaculate decorative order throughout, with careful attention paid to retaining the original character of the property. Intricate cornicing, original features and a particularly grand staircase all add to the feeling of quality and history, whilst thoughtful modern finishes blend seamlessly into the home. One of the standout details is the original front door, now retained internally, complete with beautiful stained glass.

At the heart of the house is a stunning shaker style kitchen/breakfast room finished with stone worktops, warm herringbone flooring and flooded with natural light through two sets of sliding doors which open beautifully onto the garden. The adjoining dining area creates a fantastic entertaining space, whilst the separate living room offers a more cosy retreat. A useful study, additional studio space and downstairs cloakroom add flexibility for modern family life.

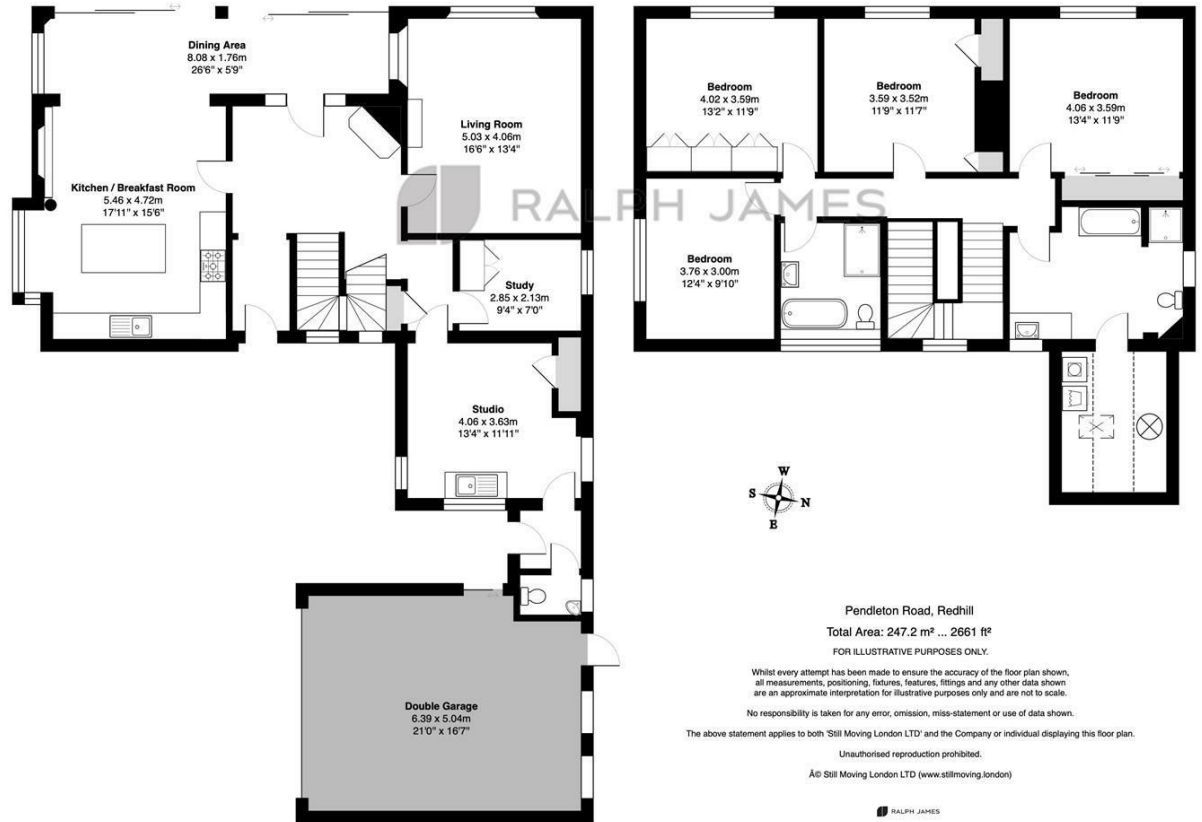
Upstairs, there are four generous bedrooms arranged around a spacious landing, alongside a large bathroom positioned adjacent to the principal bedroom, almost giving an en suite feel. A well appointed family bathroom services the remaining bedrooms.

Outside, the gardens wrap around the rear and both sides of the house, creating multiple seating areas which enjoy a sunny south westerly aspect throughout the day. A detached double garage and driveway complete what is a truly special home in one of the area's most sought after locations.



# Need to know

- Beautifully renovated period home positioned in a highly sought after location just off Pendleton Road.
- Walking distance to both Redhill and Reigate town centres, stations and a range of independent shops and restaurants.
- Stunning open plan kitchen/dining space with shaker cabinetry, stone worktops and sliding doors onto the garden.
- South west facing wrap around garden enjoying sun throughout the day and ideal for entertaining.
- Four generous bedrooms and multiple reception spaces perfectly suited to growing families.
- Character property retaining original features including stained glass, intricate cornicing and a grand staircase.
- Double garage and private driveway providing excellent off street parking.
- Opposite Earlswood Common with beautiful walks, green space and outdoor lifestyle right on the doorstep.
- Close to well regarded primary and secondary schools.
- Council Tax Band: G



## Interested?

redhill@ralphjames.co.uk  
01737 765 555

ralphjames.co.uk