

WE VALUE



YOUR HOME



Rotten Row, Dorchester-on-Thames
£825,000



Welcome to Pilgrims, a chain-free, beautifully refurbished Grade II listed detached family home, set in the very heart of this sought-after village and rich in period character throughout.

The property has undergone a comprehensive programme of improvement, including updated plumbing and electrics, specialist timber restoration to the façade, a superb bespoke new kitchen with high-end appliances, new oak engineered flooring, new carpets, and a new family bathroom and cloakroom. The home has also been freshly redecorated externally, with newly clad dormers, ensuring it is presented to a high standard both inside and out.

The generous accommodation includes a lounge, family room and dining room, showcasing two impressive inglenook fireplaces, exposed beams and a wonderful sense of warmth and authenticity, along with a separate study, kitchen and cloakroom. Upstairs, there are three well-proportioned bedrooms and a family bathroom.

Outside, the elevated south-facing rear garden offers excellent potential for further landscaping and relaxed outdoor enjoyment. The property also benefits from off-street parking and a double garage.

Set within a village celebrated for its historic charm, the road itself featured as a filming location. The village is also home to the renowned Abbey, a striking landmark that adds to the area's rich heritage and enduring appeal.

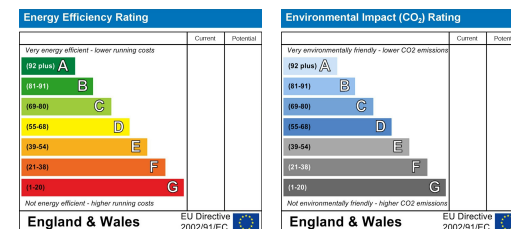
If you love period homes but want the reassurance and comfort of a property that has been thoughtfully modernised, Pilgrims could be an exceptional home in a truly special village setting.

*Some images have been virtually staged with furniture to show potential layout options.



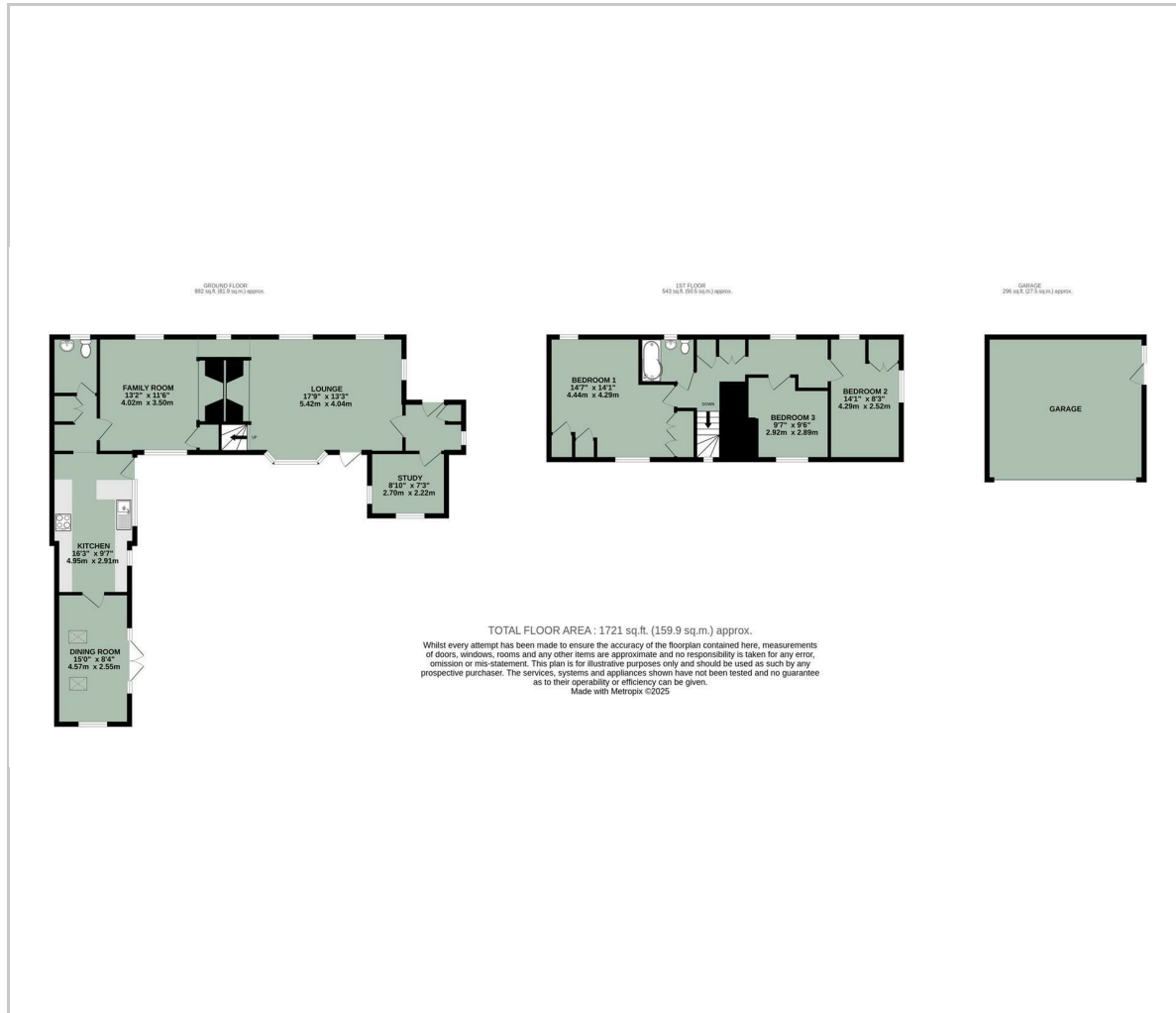


- NEWLY REFURBISHED THROUGHOUT
- OFFERED WITH NO ONWARD CHAIN
- DETACHED GRADE II LISTED PROPERTY
- DESIRABLE LOCATION WITHIN DORCHESTER-ON-THAMES
- PERIOD FEATURES & TWO INGLENOOK FIREPLACES
- SOUTH FACING REAR GARDEN
- DOUBLE GARAGE & OFF-STREET PARKING
- NEW OAK ENGINEERED FLOORING & CARPETS



Energy Efficiency Graph

Floor Plan



Area Map



Viewing

Please contact our In House Sales & Lettings Office on 01491 839999 opt.1 if you wish to arrange a viewing appointment for this property or require further information.

These particulars, whilst believed to be accurate are set out as a general outline only for guidance and do not constitute any part of an offer or contract. Intending purchasers should not rely on them as statements of representation of fact, but must satisfy themselves by inspection or otherwise as to their accuracy. No person in this firm's employment has the authority to make or give any representation or warranty in respect of the property.

28 St Martins Street, Wallingford, Oxfordshire, OX10 0AL
Tel: 01491 839999 opt.1 Email: sales@inhouseestateagents.co.uk www.inhouseestateagents.co.uk