



St. Christophers Close  
Isleworth

£594,950

Freehold

This stunning three bedroom terraced house offers a perfect blend of modern living and family comfort. Spanning an impressive 1288 square feet, this extended family home has been refurbished to a high standard, ensuring a stylish and welcoming atmosphere throughout.

Upon entering, you will find a spacious reception room that serves as an ideal space for relaxation and entertaining. The



extended kitchen is a true highlight, providing ample room for culinary creativity and family gatherings. Additionally, the convenience of a downstairs WC adds to the practicality of this delightful home.

The property boasts three well proportioned bedrooms, perfect for a growing family or those seeking extra space. Furthermore, there is a versatile room in the loft, which can be utilised as a study, playroom, or additional storage, catering to your individual needs.

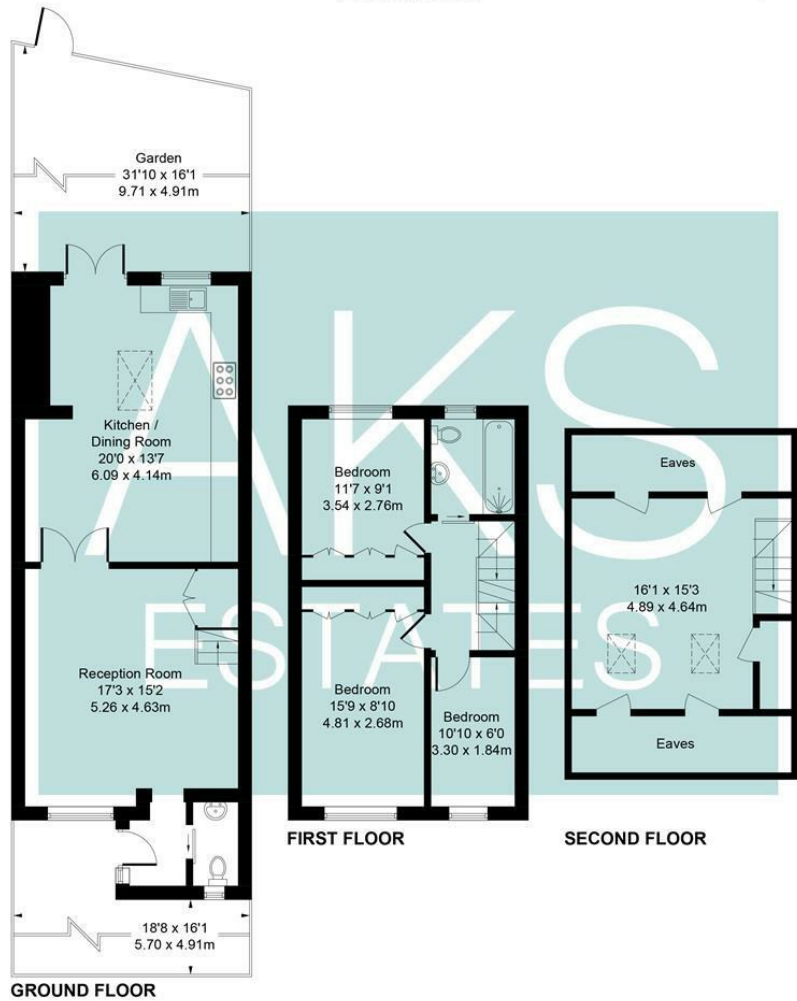
Completing this wonderful home is a garage located in a nearby block, offering secure parking and extra storage options. With its prime location in Isleworth, residents will enjoy easy access to local amenities, parks, and excellent transport links.

This property is an exceptional opportunity for those seeking a beautifully presented family home in a desirable area. Do not miss the chance to make this lovely house your new home.





**St Christopher's Close, Isleworth**  
 Approximate Gross Internal Area = 1288 sq ft / 119.7 sq m  
 (Excluding Eaves)



Not to Scale. Produced by © Vizion Property Marketing 2026  
 For Illustrative Purposes Only.



Energy Efficiency Rating		Current	Potential
Very energy efficient - lower running costs			
(92 plus) A			87
(81-91) B			
(69-80) C			
(55-68) D		60	
(39-54) E			
(21-38) F			
(1-20) G			
Not energy efficient - higher running costs			
<b>England &amp; Wales</b>		EU Directive 2002/91/EC	

Agents Note: Whilst every care has been taken to prepare these particulars, they are for guidance purposes only. All measurements are approximate and are for general guidance purposes only and whilst every care has been taken to ensure their accuracy, they should not be relied upon and potential buyers/tenants are advised to recheck the measurements

Heston  
 131A Heston Road  
 Hounslow  
 TW5 0RF

020 8059 0595  
 shiv@aksestates.co.uk  
 aksestates.co.uk

