



## GROUP 1

31 Draycott Avenue | | LONDON | SW3 3BS

£3,810 Per month

**ESON2**  
REAL ESTATE

## Key features

- Open-Plan Living
- High-End Kitchen
- Luxurious Bathroom
- Smart Design
- On-site Gym
- Workspace Facilities
- 24/7 Security

## Description

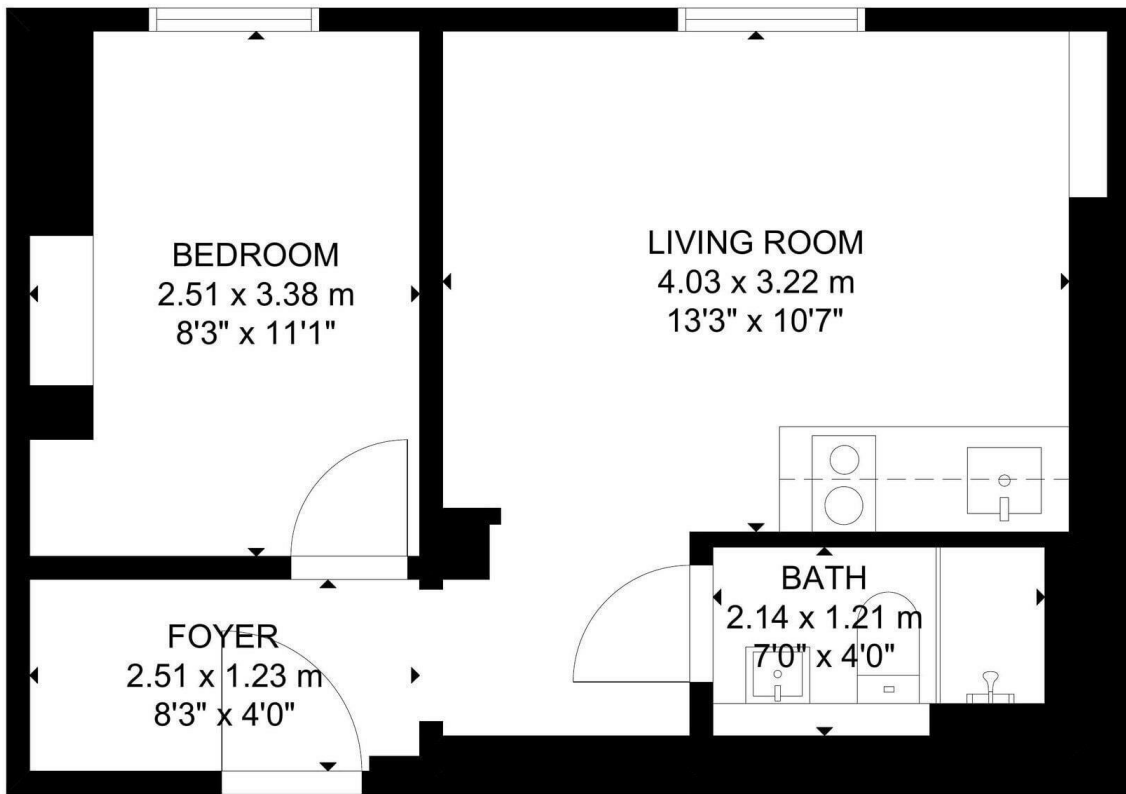
A newly renovated one-bedroom apartment in Chelsea's SW3 featuring a modern kitchen with premium appliances, wood flooring, and a stylish bathroom with a raised base shower. Residents benefit from 24-hour gym access, secure entry, and CCTV. Ideally located in the Draycott area, close to shops, cafés, transport links, and green spaces.

## Directions



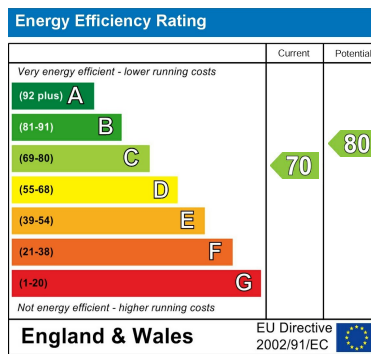
A beautifully refurbished one-bedroom apartment situated in the sought-after Draycott area of Chelsea SW3, combining contemporary design with city living.

# Floor plans



THIRD FLOOR

GROSS INTERNAL AREA  
 TOTAL: 30 m<sup>2</sup>/324 sq ft  
 GROUND FLOOR: 30 m<sup>2</sup>/324 sq ft  
 SIZE AND DIMENSIONS ARE APPROXIMATE, ACTUAL MAY VARY.



Council Tax Band    EPC Rating C



301 Michelin House 81 Fulham road  
 London  
 Greater London  
 SW3 6RD  
 07920 257649  
 fayeel@eson2.co.uk  
 www.eson2.co.uk