



## Bishops Park Road, SW6

£750,000

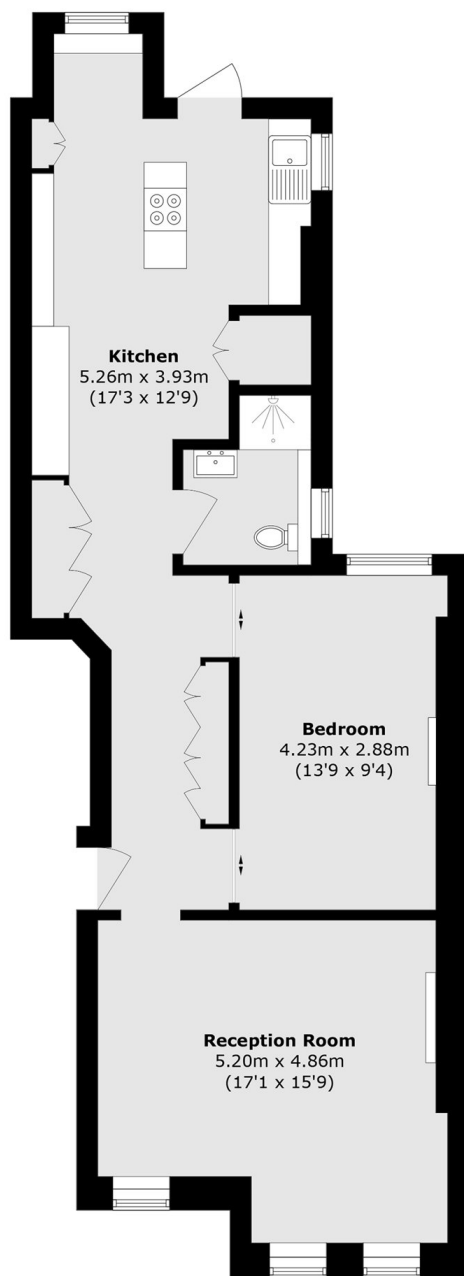
This one bedroom ground floor flat in Bishops Mansions, offers a rare combination of elegant period proportions and direct access to beautifully maintained communal gardens in one of Fulham's most desirable mansion blocks

Situated on Bishops Park Road and directly opposite Bishops Park, the property is perfectly placed for leisure and commuting. The Thames Path is also just a short stroll away

### Features

- High Ceilings
- Communal Gardens
- Modern Interiors
- Dynamic Space
- Mansion Block
- Bishops Park

# Bishops Park Road, London, SW6



Total area (approx.): 71.8 sq. m (772.8 sq. ft)