



WESTBOURNE GARDENS, W2

£775,000

One double bedroom
Share of freehold
No onward chain
Great ceiling height
Excellent condition
EPC- D

@marshandparsons
marshandparsons.co.uk

MARSH &
PARSONS



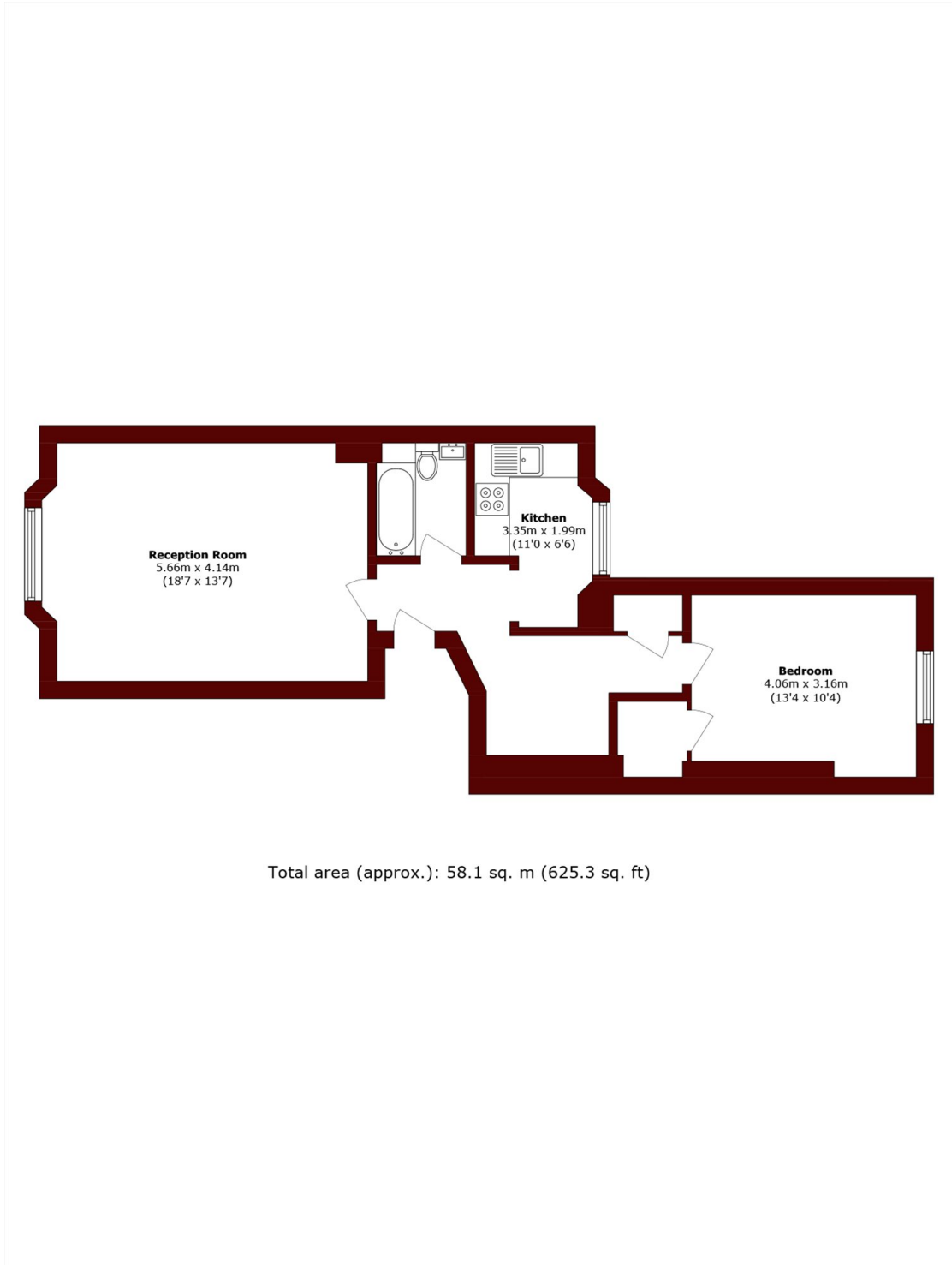
ABOUT THE PROPERTY

A beautifully presented raised ground floor apartment overlooking a quiet communal garden, featuring high ceilings, wooden floors, and floor-to-ceiling sash windows.

Westbourne Gardens is a secluded and highly desirable location, just a short walk from the eclectic mix of shops, restaurants, and bars along Westbourne Grove and Queensway. Notting Hill, with its renowned Portobello Road Market, is also within easy reach, as is Paddington Station, providing access to the Heathrow Express and the Elizabeth line (Crossrail).



STEP INSIDE WESTBOURNE GARDENS



Notting Hill
020 7313 2890

Energy Rating: D We aim to make our particulars both accurate and reliable. However, they are not guaranteed; nor do they form part of an offer or contract. If you require clarification on any points then please contact us, especially if you're traveling some distance to view. Please note that appliances and heating systems have not been tested and therefore no warranties can be given as to their good working order

MARSH &
PARSONS