



**Guide Price**  
**£600,000**

**Freehold**

4x  2x  2x 

**Ditton Place, Ditton,  
Aylesford, Kent, ME20**

**OVER 60?**

Secure this property  
for up to **59% less!**

*Wards*  
Helping you move forwards



## Main features

- Well presented throughout
- An en-suite shower room & a bathroom adds luxury
- Handy utility room for your convenience
- Great commuter links by road & rail close by
- Good schools, amenities & leisure facilities close by

## Accommodation

### GROUND FLOOR

- Entrance Hall
- Cloakroom
- Lounge: 17'0 x 16'8 (5.19m x 5.08m)
- Dining Area: 11'11 x 8'9 (3.63m x 2.67m)
- Kitchen: 11'10 x 7'11 (3.61m x 2.41m) plus 8'7 x 6'0 (2.62m x 1.83m)
- Utility: 11'3 x 5'3 (3.43m x 1.60m)
- Family Room: 11'3 x 10'4 (3.43m x 3.15m)

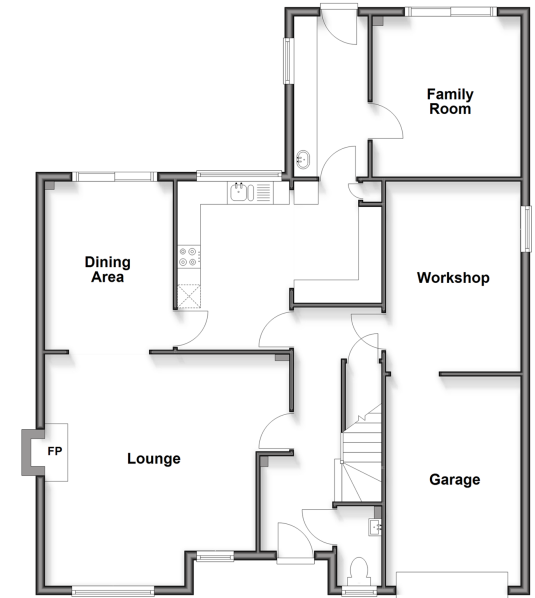
### FIRST FLOOR

- Landing
- Bedroom 1: 17'1 x 13'10 (5.21m x 4.22m) narrowing to 10'9 x 6'10 (3.28m x 2.08m)
- En-Suite Shower Room
- Bedroom 2: 15'2 x 12'10 (4.63m x 3.91m)
- Bedroom 3: 12'0 x 9'1 (3.66m x 2.77m)
- Bedroom 4: 11'5 x 9'0 (3.48m x 2.75m)
- Bathroom

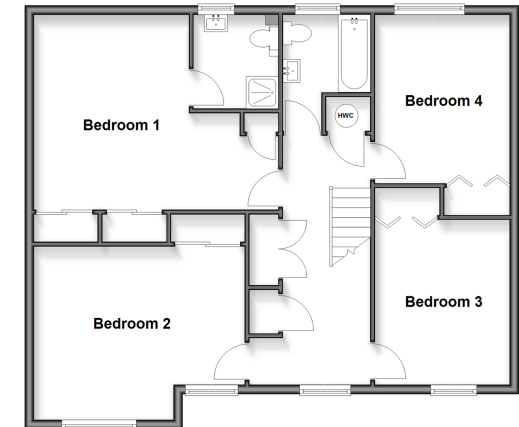
### OUTSIDE

- Driveway
- Garage & Workshop
- Front & Rear Gardens

**Ground Floor**  
Approx. 105.8 sq. metres (1138.7 sq. feet)



**First Floor**  
Approx. 85.2 sq. metres (916.6 sq. feet)



**Call Larkfield - 01732 847877 ■ [wardsof Kent.co.uk](http://wardsof Kent.co.uk)**

- Legal advice should be taken to verify fixtures/fittings, planning, alterations and/or lease details
- Appliances & services are untested, dimensions are approximate and floor plans are not to scale
- Through a Homewise Home For Life Plan people aged 60+ can secure this property for up to 59% less, by purchasing a Lifetime Lease



12935750/20260302/CK/JT