



# WETHERELL

MAYFAIR'S FINEST PROPERTIES



## Green Street, W1K

£10,835 PCM

This exceptional three bedroom Penthouse apartment is situated on one of Mayfair's most prestigious streets and offers refined living in a prime central London location.

Accessed via direct lift entry, the property opens into a nicely proportioned hallway. The spacious reception room is complemented by a separate formal dining room, ideal for both dining and entertaining guests.

The apartment comprises three well-proportioned bedrooms, each with its own en-suite bathroom. The apartment boasts high quality fixtures, fittings and furnishings as well as air-conditioning throughout and a private terrace.

Green Street is situated between North Audley Street and Park Lane, and the property is located at the favoured Eastern end. It is well placed for access to the internationally renowned shops and restaurants of Mayfair.



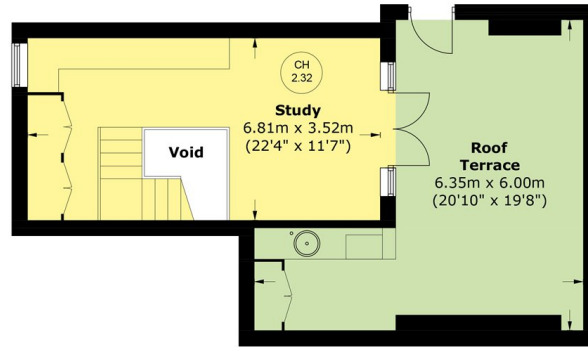
## FEATURES

- Penthouse Apartment • Air Conditioning • 3 Bathrooms + Guest WC • Direct Lift Access • Private Terrace • 2 Reception Rooms •

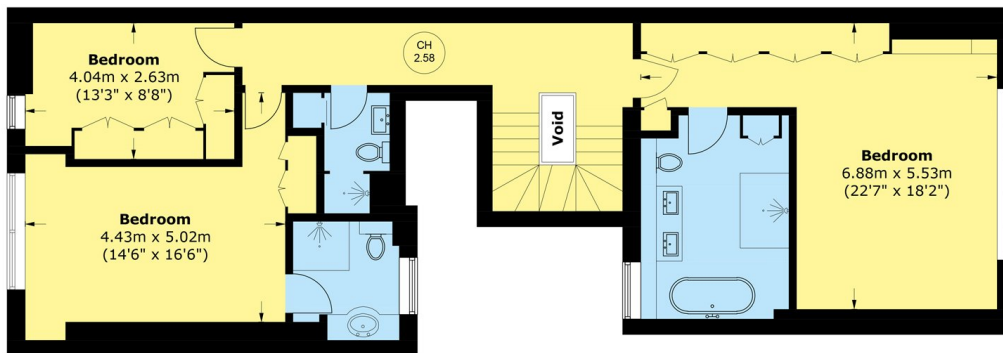


# Green Street, London, W1K

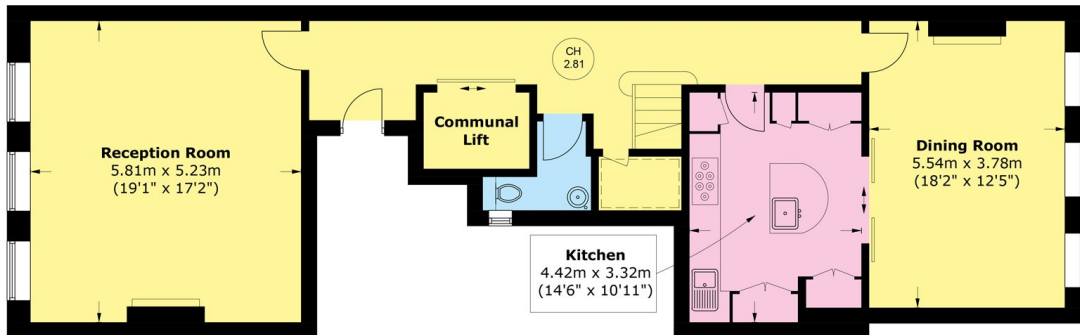
 = Reduced head height below 1.5m



**Fifth Floor**



**Fourth Floor**



**Third Floor**

Total area (approx.): 207.6 sq. m (2,234.6 sq. ft)  
(Including Communal Lift / Excluding Void)  
Roof Top Terrace: 27.3 sq. m (293.8 sq. ft)



**WETHERELL**  
MAYFAIR'S FINEST PROPERTIES

102 Mount Street,  
London, W1K 2TH

T: 020 7529 5588  
E: [rentals@wetherell.co.uk](mailto:rentals@wetherell.co.uk)

We aim to make our particulars both accurate and reliable. However they are not guaranteed; nor do they form part of an offer or contract. If you require clarification on any points then please contact us, especially if you're traveling some distance to view. Please note that appliances and heating systems have not been tested and therefore no warranties can be given as to their working order.



[wetherell.co.uk](http://wetherell.co.uk)