



Price
£650,000

Freehold

4x  2x  2x 

**Harvel Road, Meopham,
Gravesend, Kent, DA13**

OVER 60?

Secure this property
for up to **59% less!**

Wards
Helping you move forwards



Main features

- Exclusive private development of three houses
- Generous driveway and garage offering excellent private parking
- Well proportioned bedrooms
- Attractive rear garden ideal for entertaining friends and family
- Close to shops and schools

Accommodation

GROUND FLOOR

Hallway
 Cloakroom: 4'11 x 4'9 (1.50m x 1.45m)
 Lounge: 13'0 x 12'8 (3.97m x 3.86m)
 Dining Room : 10'6 x 8'11 (3.20m x 2.72m)
 Study: 8'4 x 6'9 (2.54m x 2.06m)
 Kitchen: 12'10 x 11'10 (3.91m x 3.61m)

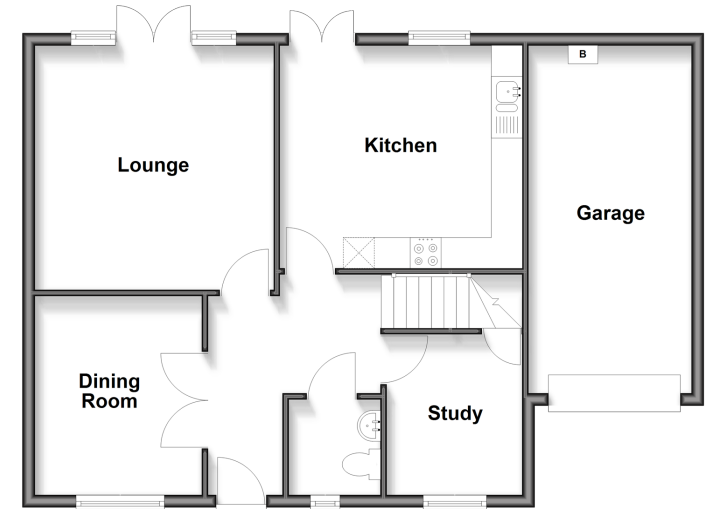
FIRST FLOOR

Landing
 Bedroom 1: 12'9 x 11'2 (3.89m x 3.41m)
 Ensuite Shower Room: 8'10 x 3'2 (2.69m x 0.97m)
 Bedroom 2: 11'2 x 10'8 (3.41m x 3.25m)
 Bedroom 3: 10'8 x 8'10 (3.25m x 2.69m)
 Bedroom 4: 8'3 x 6'8 (2.52m x 2.03m)
 Bathroom: 7'0 x 5'7 (2.14m x 1.70m)

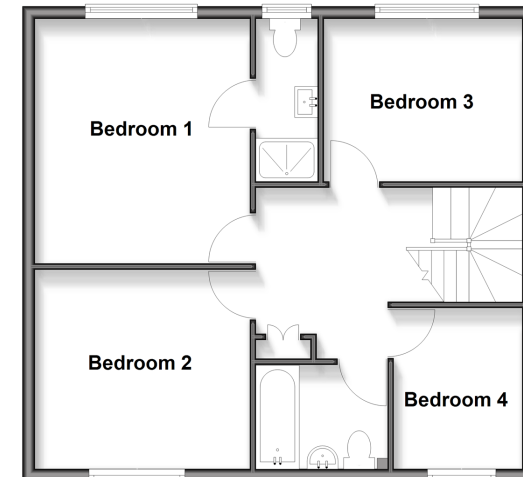
OUTSIDE

Garage
 Driveway
 Front Garden
 Rear Garden

Ground Floor
 Approx. 73.0 sq. metres (785.3 sq. feet)



First Floor
 Approx. 57.5 sq. metres (619.0 sq. feet)



Unable to display material information. Please check with the branch for material information details for this property