



GUIDE PRICE

**£650,000**

**Pope Road**

Bromley, BR2 9QB



## PROPERTY SUMMARY

\*\*\*GUIDE PRICE £650,000 - £675,000\*\*\* Sinclair Hammelton are proud to present this newly refurbished four double bedroom terraced house with off-street parking, located in the heart of Chatterton Village. This beautifully finished family home is ideally positioned for both Bickley and Bromley South stations and is also within close proximity to Raglan Primary School, as well as a range of local shops and parks. The ground floor offers a welcoming entrance hallway, a bright and spacious open-plan through lounge, a modern fully fitted kitchen/diner, a downstairs W/C and a separate utility room. On the first floor, there are three generously sized double bedrooms along with a contemporary family bathroom. The second floor boasts an impressive principal bedroom featuring a dressing area, ample built-in storage and a stylish en-suite shower room. This property is perfect for families looking for space, style and a convenient location. Viewing is highly recommended.

EPC: C  
Freehold  
COUNCIL TAX - D  
Construction -  
Mains Services -  
Heating System -

4



2



1









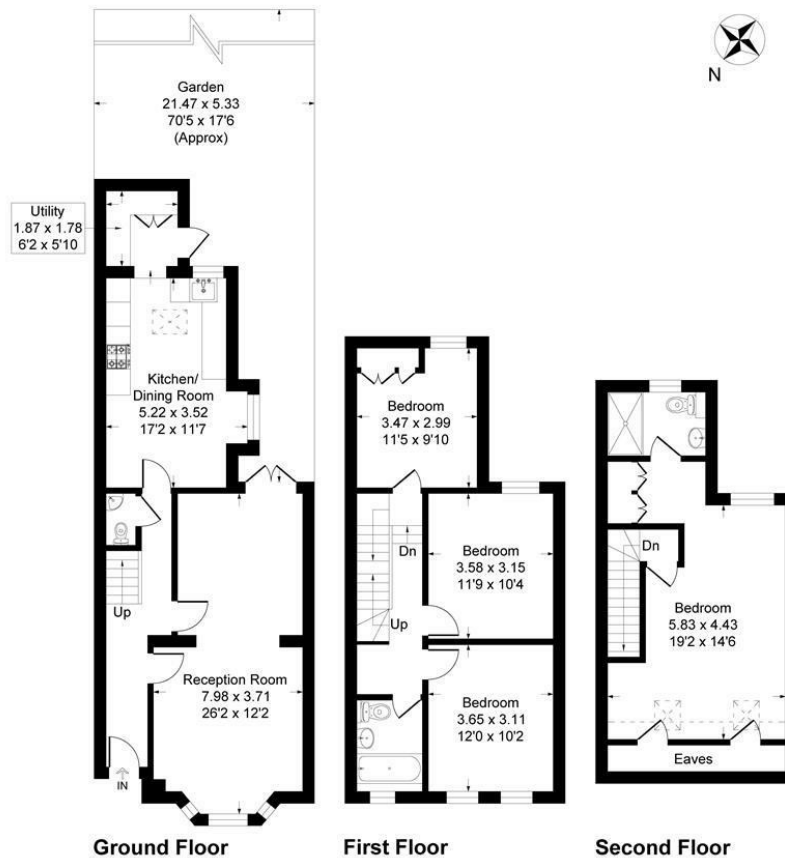






## Pope Road, BR2

Approximate Gross Internal Area 137.0 sq m / 1475 sq ft



This plan is for layout guidance only. Not drawn to scale unless stated. Windows and door openings are approximate. Whilst every care is taken in the preparation of this plan, please check all dimensions, shapes and compass bearings before making any decisions reliant upon them.  
Produced By Planpix

### LOCAL AUTHORITY

### TENURE

Freehold

### EPC RATING:

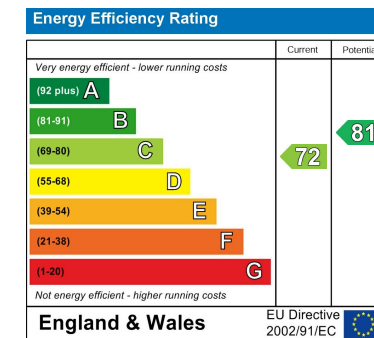
C

### COUNCIL TAX BAND

D

### VIEWINGS

By prior appointment only



Agents Note: Whilst every care has been taken to prepare these particulars, they are for guidance purposes only. All measurements are approximate and are for general guidance purposes only and whilst every care has been taken to ensure their accuracy, they should not be relied upon and potential buyers/tenants are advised to recheck the measurements

Sinclair Hammelton

### OFFICE ADDRESS

23 High Street  
Bromley  
Kent  
BR1 1LG

### OFFICE DETAILS

0208 464 5566  
info@sinclairhammelton.co.uk