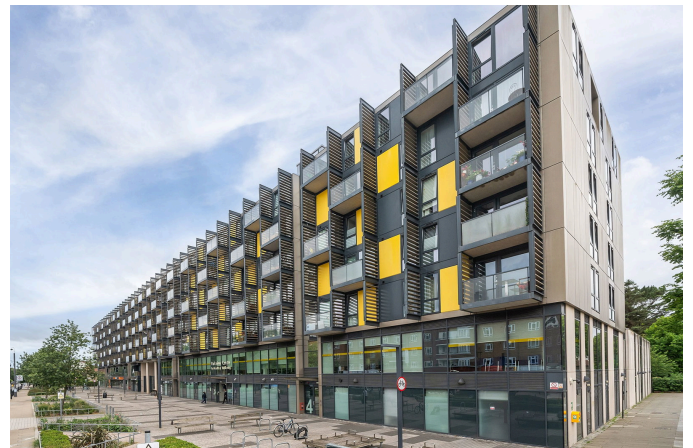


Cranston Court, Shepherd's Bush, W12

Guide Price £500,000 to £550,000

2 2 1



- Quote MG1175 for all enquiries.
- Guide Price £500,000 - £550,000
- 2 Double Bedrooms
- 2 Bathrooms (1 Ensuite)
- Underground Parking with EV Charging
- West Facing Balcony Overlooking The Park
- 4th Floor
- Onsite Building Manager
- Beautifully refurbished throughout
- Almost 900 sqft

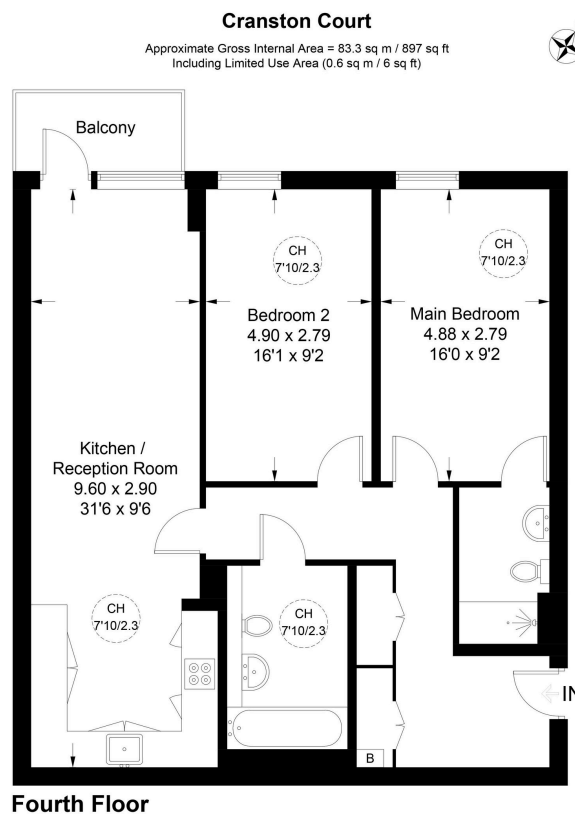


Illustration for identification purposes only, not for valuation purposes, measurements are approximate, not to scale: IPMS2

Measuring almost 900 sq ft, this impressive fourth-floor apartment offers bright, modern living in one of West London's most exciting locations. The spacious open-plan kitchen and reception room opens onto a superb west-facing balcony overlooking the park, creating the perfect space to relax or entertain. There are two double bedrooms, including a principal bedroom with ensuite shower room, plus a modern family bathroom and excellent storage throughout.