



## BATOUM GARDENS W6



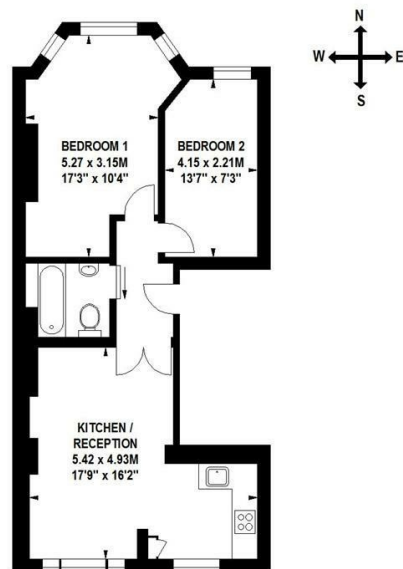


- 2 BEDROOMS • WOODEN FLOORS THROUGHOUT • OPEN PLAN RECEPTION • FITTED KITCHEN • BATHROOM • CLOSE TO TRANSPORT AND SHOPS • EPC RATING C • AVAILABLE JULY 29TH • UNFURNISHED • COUNCIL TAX BAND D

Excellent 2 bedroom apartment, with wooden floors throughout, bright open plan reception, contemporary fitted kitchen and modern bathroom. Located on a quiet residential street, close to the transport links at Shepherds Bush and Hammersmith, and the shops and amenities on Shepherds Bush Road. Available July 29th, unfurnished.

### Batoum Gardens, W6

Approximate Gross Internal Area 65 sq m / 700 sq ft



First Floor

Floor Plan produced for Finlay Brewer by Mays Floorplans © . Tel 020 3397 4594  
Illustration for identification purposes only, not to scale  
All measurements are maximum, and include wardrobes and window bays where applicable  
This Floorplan has been prepared in accordance with the current edition of the RICS code of measuring practice.

138 Shepherds Bush Road, London, W6 7PB  
Tel: 020 7371 4071 [lettings@finlaybrewer.co.uk](mailto:lettings@finlaybrewer.co.uk)