



Inverness Terrace,
Bayswater, W2

Asking Price £400,000



1



1



1



D

Inverness Terrace, Bayswater, W2

Asking Price £400,000



Summary Description

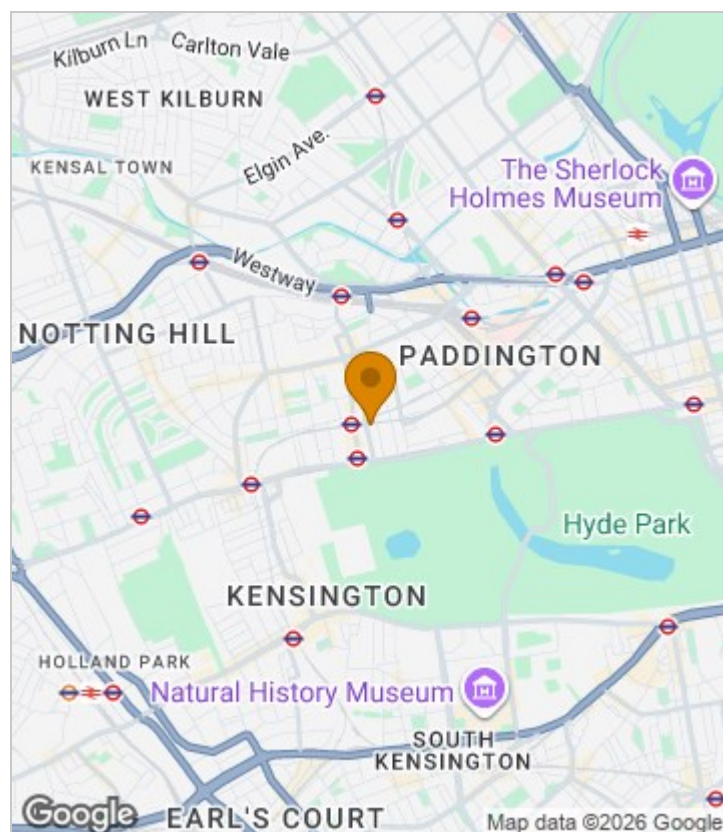
Horley Court, Inverness Terrace W2. A second floor apartment ideally situated in the heart of Bayswater. The apartment offers a mezzanine over-looking an open plan kitchen reception room, bedroom and three piece bathroom. The apartment further benefits from being offered chain free and with a share of freehold. Ideal first time buy or buy to let investment.

Inverness Terrace is superbly located in the heart of Bayswater, W2, one of West London's most vibrant and well-connected neighbourhoods. Queensway offers a wide selection of shops, cafés, restaurants, and everyday amenities, creating a lively yet convenient setting.

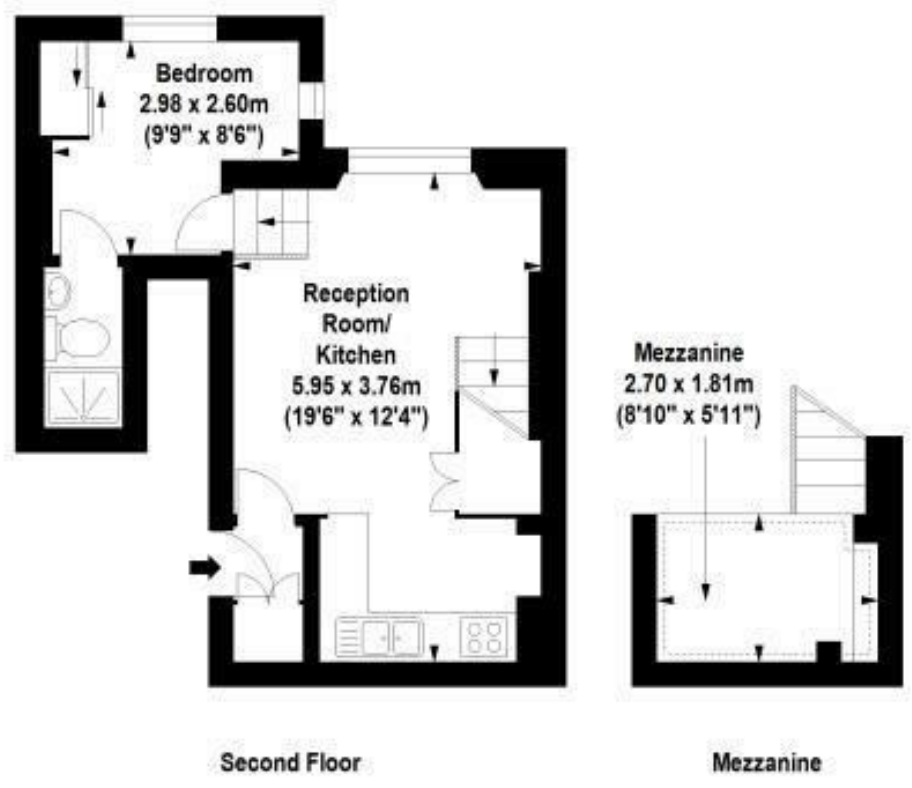
The property is moments from the open green spaces of Hyde Park and Kensington Gardens, providing an excellent balance of city living and outdoor leisure. Transport links are outstanding, with Queensway (Central Line) and Bayswater (Circle and District Lines) Underground stations both within easy walking distance, as well as Paddington Station close by, offering National Rail services and the Heathrow Express.

Share of Freehold, Service Charge £2,499.20pa Ground Rent £100pa.

Area Map



Floor Plan



For Identification Purposes Only. Not To Scale. © www.totalvista.uk 2017

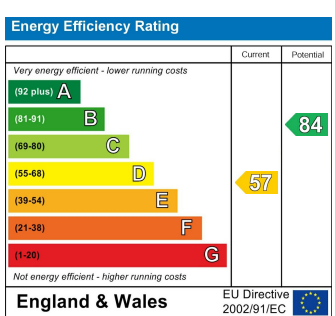


**Horley Court,
Inverness Terrace, W2**

Approx. Gross Internal Area
32.61 Sq M - 351 Sq Ft
Approx. Gross Gallered Storage Area
4.83 Sq M - 52 Sq Ft



Energy Efficiency Graph



Viewing

Please contact our Sales SB Office on 0208 740 8740 if you wish to arrange a viewing appointment for this property or require further information.

- PERIOD BUILDING
- ONE BEDROOM
- CHAIN FREE
- CLOSE TO BAYSWATER TUBE
- CLOSE TO QUEENSWAY TUBE
- SECOND FLOOR APARTMENT
- MEZZANINE AREA
- SHARE OF FREEHOLD
- CLOSE TO HYDE PARK

For further information contact:

Sales SB, 234 Uxbridge Road, Shepherds Bush, London, W12 7JD

Tel: 0208 740 8740 Email: enquiries@jorgensenturner.com

<https://www.jorgensenturner.com/>

Disclaimer

These particulars, whilst believed to be accurate are set out as a general outline only for guidance and do not constitute any part of an offer or contract. Intending purchasers should not rely on them as statements of representation of fact, but must satisfy themselves by inspection or otherwise as to their accuracy. No person in this firms employment has the authority to make or give any representation or warranty in respect of the property.