



16 Outfield Close

Corby, Northamptonshire NN18 8FX



Simpson West

Located within the highly sought after Great Oakley area is this well presented and rarely available ONE bedroom second floor apartment that is being offered to the market for sale with NO ONWARD CHAIN. The property itself is located within a stones throw to shops, transport links and other amenities. Features include spacious communal halls, an entrance hall, living area which flows into an open plan kitchen dining area. There is a large double bedroom and main bathroom boasting a three piece fitted suite with shower over bath. Outside there is an allocated parking space for one vehicle with on street parking available nearby for guests. Early viewings are a must. Energy rating B. Service Charge/Ground Rent/Garden Maintenance Fees applicable of approx £1210 per annum. Council Tax Band B.

£125,000



1



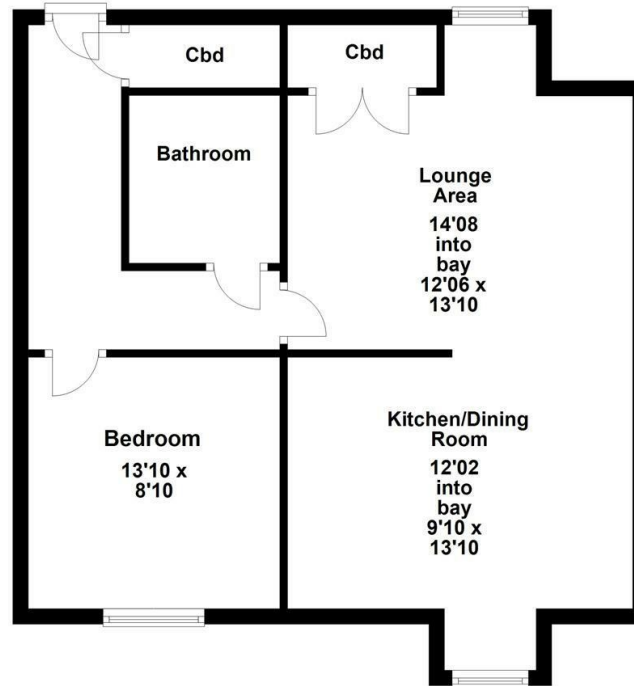
1



1




Second Floor



Floor plan not to scale - for guidance purposes only.
 Floor plan created by Simpson West for their use.
 Plan produced using PlanUp.



Energy Efficiency Rating		
	Current	Potential
<i>Very energy efficient - lower running costs</i>		
(92 plus) A		
(81-91) B	82	82
(69-80) C		
(55-68) D		
(39-54) E		
(21-38) F		
(1-20) G		
<i>Not energy efficient - higher running costs</i>		
England & Wales	EU Directive 2002/91/EC 	



When you buy with Simpson West, you know **you'll be in safe hands**. From the moment you walk through our doors, we'll make you **feel truly welcome**. Our sales consultants and financial advisors will take you through **every step of the process**, offering **free expert advice** along the way, from help choosing the right mortgage and insurance through to finding your conveyancer. And if you need help selling your home too, **with over 20 years of local experience, you can trust us to get you moving**.



**Simpson
West**

Making Every
Journey Personal



01536 202007

info@simpsonwest.co.uk

<https://www.simpsonwest.co.uk/>

64 Corporation Street, Corby, Northants, NN17 1NH