



Union Street, SE1

£800,000

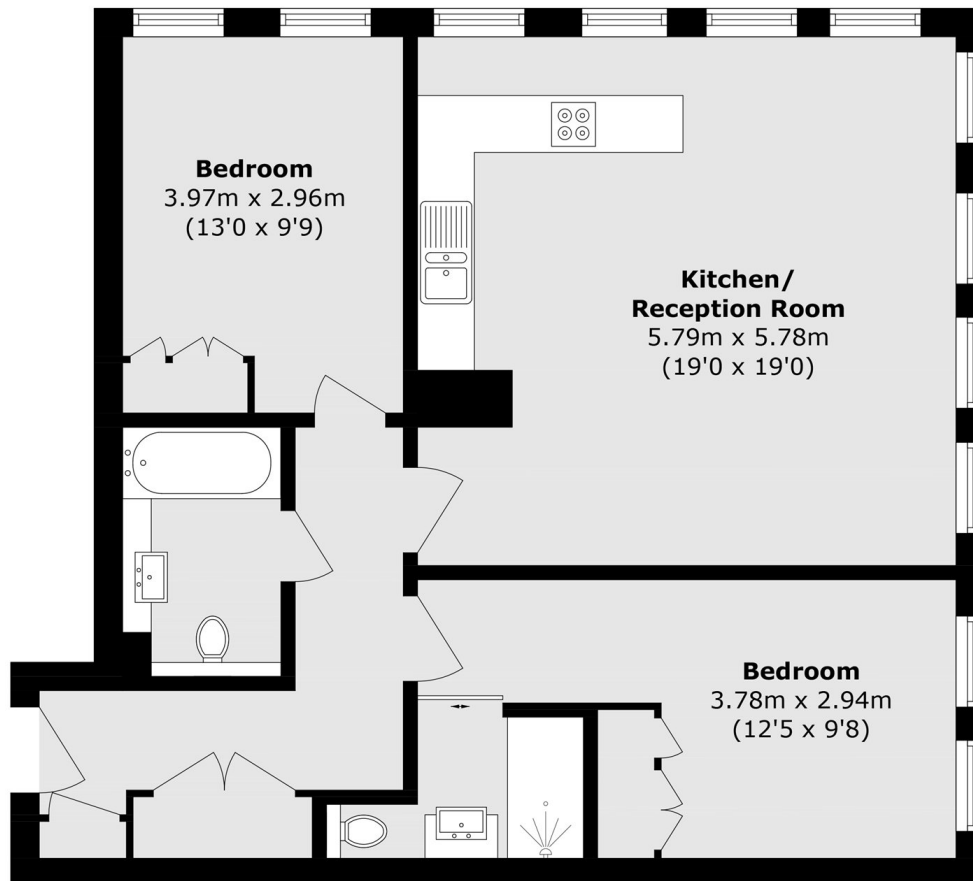
Offers in excess of £800,000. This well-presented two-bedroom apartment on the tenth floor features high quality finishes and floor-to-ceiling windows with views across the skyline. The layout includes an open-plan kitchen and living area with plenty of room for dining, plus a three-piece family bathroom. The property also benefits from ample storage and air conditioning throughout.

The Music Box is incredibly well located, in the heart of SE1, with incredible transport links from Southwark, London Bridge, Waterloo and Blackfriars Stations, plus numerous local amenities and attractions, such as Borough Market, the South Bank, the Tate Modern, Old Vic, the Cut and Lower Marsh.

Features

- 10th Floor Apartment
- Very High Specification
- Floor to Ceiling Windows
- Long Lease
- Stunning City Views
- Offers in excess of £800,000

Union Street,
London, SE1



Tenth Floor

Total area (approx.): 77.8 sq. m (837.4 sq. ft)