

Novello Street

£1,725,000

BRIK



Novello Street

£1,725,000

Freehold

4 BED

House - Terraced

0000

SQ FT

0000

SQ M

This superb four double bedroom house is arranged over three floors and extends to over 1400 sq ft (132 sq m) of well proportioned living space. The ground floor comprises a spacious double reception room at the front of the house which leads onto a modern kitchen breakfast room with French doors opening directly onto an impressive private garden, ideal for entertaining or family living. On the first floor there are two double bedrooms. The larger bedroom is positioned at the front of the house with an en-suite, while the second bedroom sits at the rear and is served by a large family bathroom. The top floor has been converted, offering two further double bedrooms with two en-suite bathrooms.

- Four bedrooms
- Four bathroom
- Double reception room
- Kitchen breakfast room
- 21'8 (6.68m) private garden
- Excellent location, close to parks
- Chain free
- Attractive period house
- Approx.1426 sq ft (132 sq m)
- Council tax band - F



The house is situated in an extremely convenient location on Novello Street (one of Fulham's most idyllic streets), only moments from Parsons Green Station (District Line, Zone 2) and in-between the large open spaces of Eel brook Common and the incredibly desirable Parsons Green. There is a Waitrose supermarket nearby, as is the famous White Horse Pub and numerous independent shops, cafés and restaurants located on Fulham Road, New Kings Road and Parsons Green close to hand. Fulham Broadway is also only a short stroll away through the park, where there is an M&S Foodhall, a Vue cinema, David Lloyd gym and a plethora of other amenities. EPC rating - C

JAMES SIMS

020 7384 6790

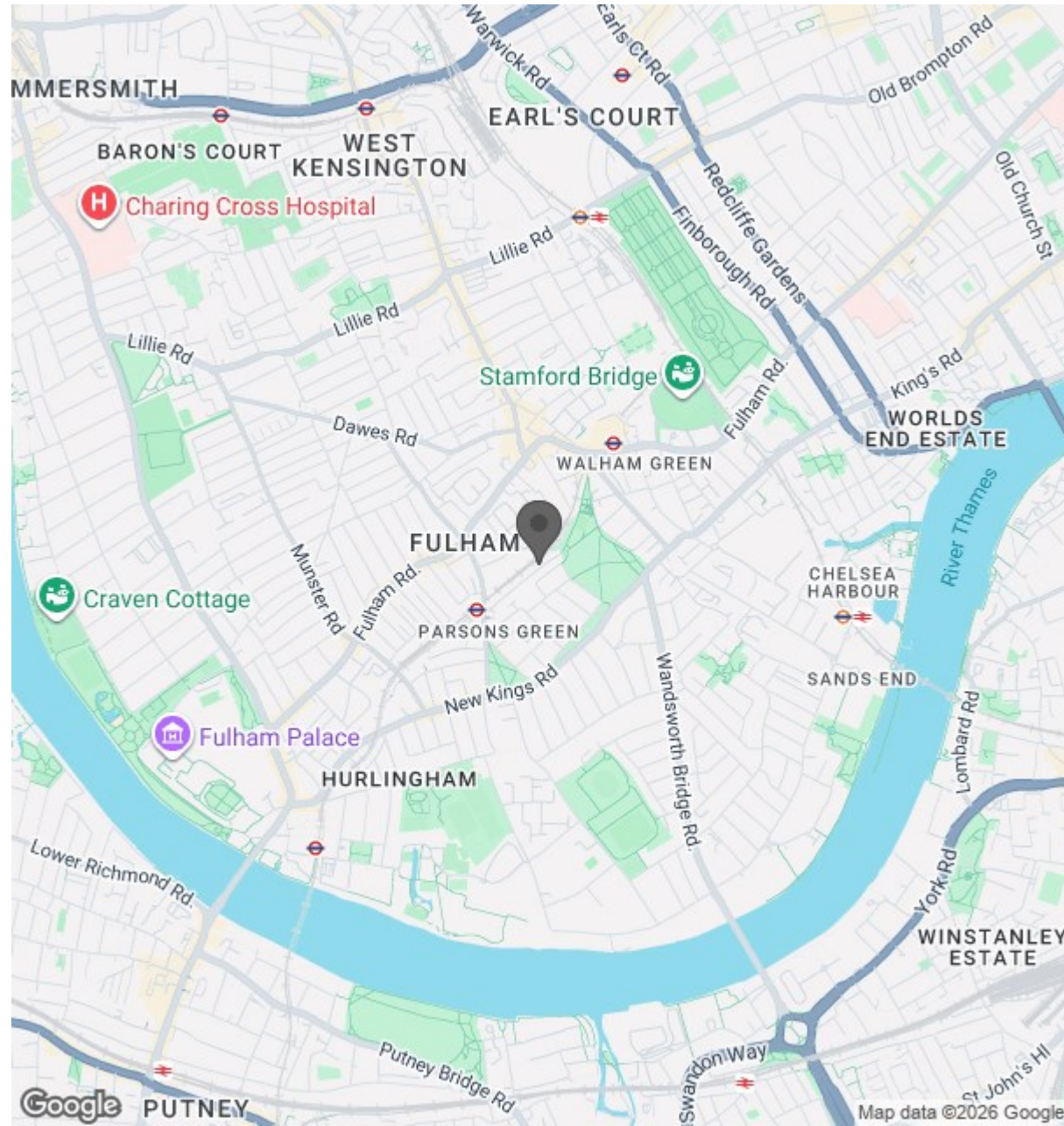
james@brik.co.uk







Location



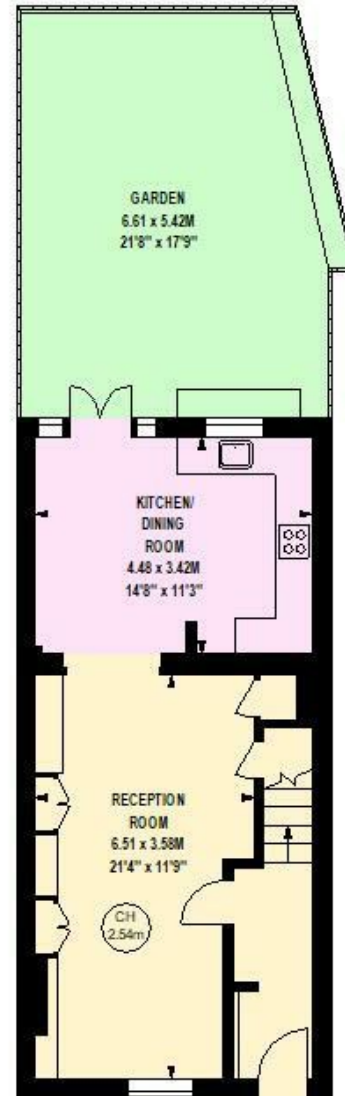
BRIK

0000
SQ FT

0000
SQ M

Novello Street, SW6

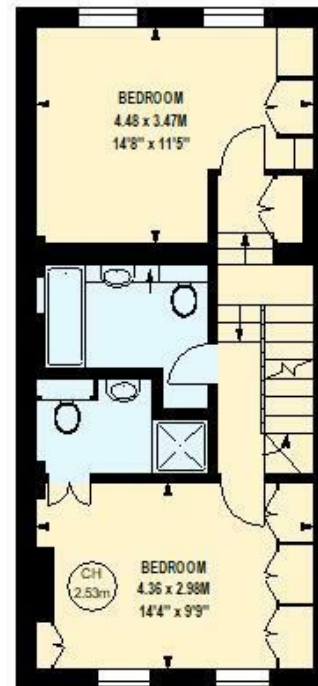
Approximate gross internal area
132.48 sq m / 1426 sq ft



Ground Floor

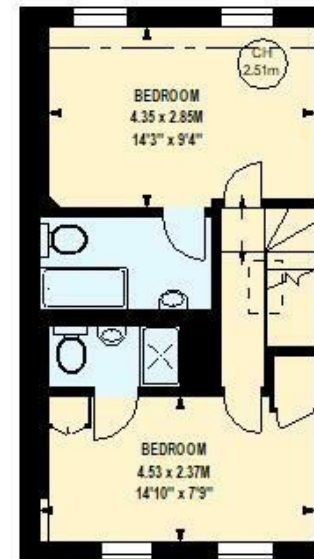
512 sqft

Key :
CH - Ceiling Height



First Floor

505 sqft



Second Floor

409 sqft

Although every attempt has been made to ensure accuracy, all measurements are approximate.
This floorplan is for illustrative purposes only and not to scale.
Measured in accordance with RICS standards.

Important notice Brik give notice that: all text, photographs and plans on these brochure are for guidance only and are not necessarily comprehensive; any areas, measurements or distances given are approximate; these details do not constitute part of an offer or contract and must not be relied upon as statements or representations of fact; it should not be assumed that the property has all the necessary planning permissions and building regulations approvals; we are not authorised to give any representations or warranties in relation to this property whatsoever; potential purchasers must satisfy themselves as to the correctness of all details by inspection or otherwise. Brik, 77 Parsons Green Lane, Fulham, London SW6 4JA Tel: 020 7384 6790 Email: hello@brik.co.uk