



Waterlow Road, N19

£475,000

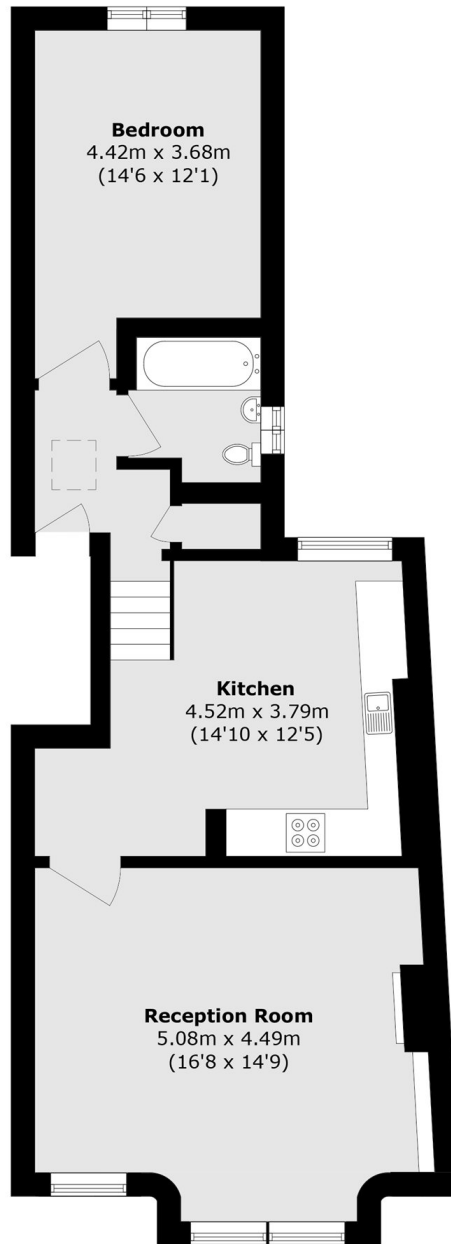
A well-proportioned top floor conversion with a spacious reception room, double bedroom and a generous kitchen diner which forms the heart of this delightful apartment.

Positioned in this quiet Victorian enclave, there is easy access to the local shops and transport connections at Archway, whilst Highgate Village and Waterlow Park are at the top of the hill.

Features

- Period Conversion
- Reception Room
- Large Kitchen
- Bathroom
- Double Bedroom
- Close to Transport

Waterlow Road, London, N19



Total area (approx.): 56.0sq. m (602.7 sq. ft)