



Connells

Ardachdu Salisbury Road
West Wellow Romsey



Property Description

Situated in the picturesque semi-rural locale of West Wellow, this charming detached bungalow offers a tranquil retreat bordering the idyllic New Forest National Park. Boasting convenient access to local amenities including shops, pubs, and restaurants, this residence promises both convenience and serenity.

Nestled at the end of a private cul-de-sac, the property welcomes you with an expansive driveway and a front garden adorned with lush lawns.

Overall, this delightful bungalow presents a rare opportunity to enjoy peaceful countryside living within reach of urban conveniences, making it an ideal retreat for families or those seeking a tranquil lifestyle.

Entrance Hall

Upon entry through the central front door, you're greeted by a spacious hallway leading to all rooms.

Cloakroom

A convenient cloakroom enhances practicality

Lounge

18' 6" x 16' 2" (5.64m x 4.93m)

The inviting lounge, positioned at the front of the property, exudes warmth with a wood burner and offers ample natural light through dual aspect double glazed windows, including

a charming bay window

Kitchen

12' 9" x 10' 9" (3.89m x 3.28m)

The modern fitted kitchen features sleek gloss finished wall and base units, complemented by solid wood surfaces. Equipped with a range cooker, extractor, and integrated appliances including a microwave, fridge freezer, and dishwasher, this culinary space is illuminated by natural light streaming in through dual aspect windows. A double glazed door grants access to the rear garden, perfect for al fresco dining.

Bedroom One

9' 9" x 14' 4" (2.97m x 4.37m)

The principal bedroom featuring a double glazed window overlooking the rear garden

Dining Room/Bedroom Three

11' 7" x 10' 10" (3.53m x 3.30m)

This second reception room, which can also serve as a third bedroom, boasts double glazed French doors opening onto the rear garden, creating a seamless indoor-outdoor flow.

Bedroom Two

12' 2" x 10' (3.71m x 3.05m)

A double bedroom with front facing aspect with carpet flooring.

Shower Room

This shower room features a sleek cubicle, a

handwash basin set within a vanity unit, and tiled walls for easy maintenance

Outside

Front Garden

Ample off road parking and part laid to lawn.

Rear Garden

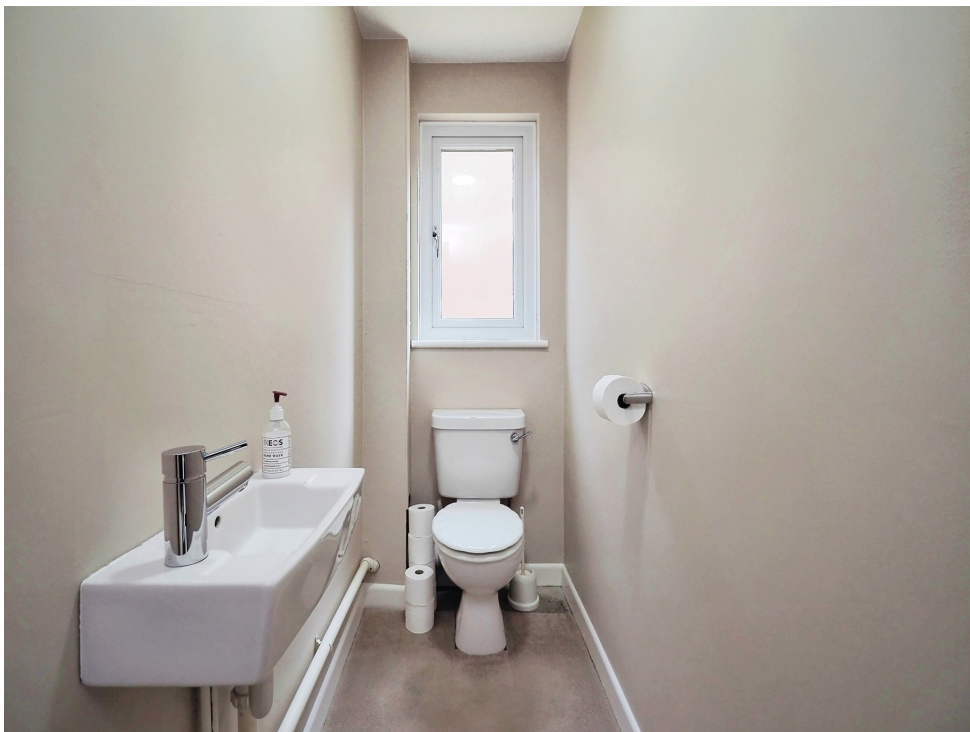
Outside, the enclosed rear garden offers privacy and tranquility, featuring a lawn, patio area, shingle space, and mature shrubs bordered by timber fencing. Double gates at the rear provide additional parking options.

Garage

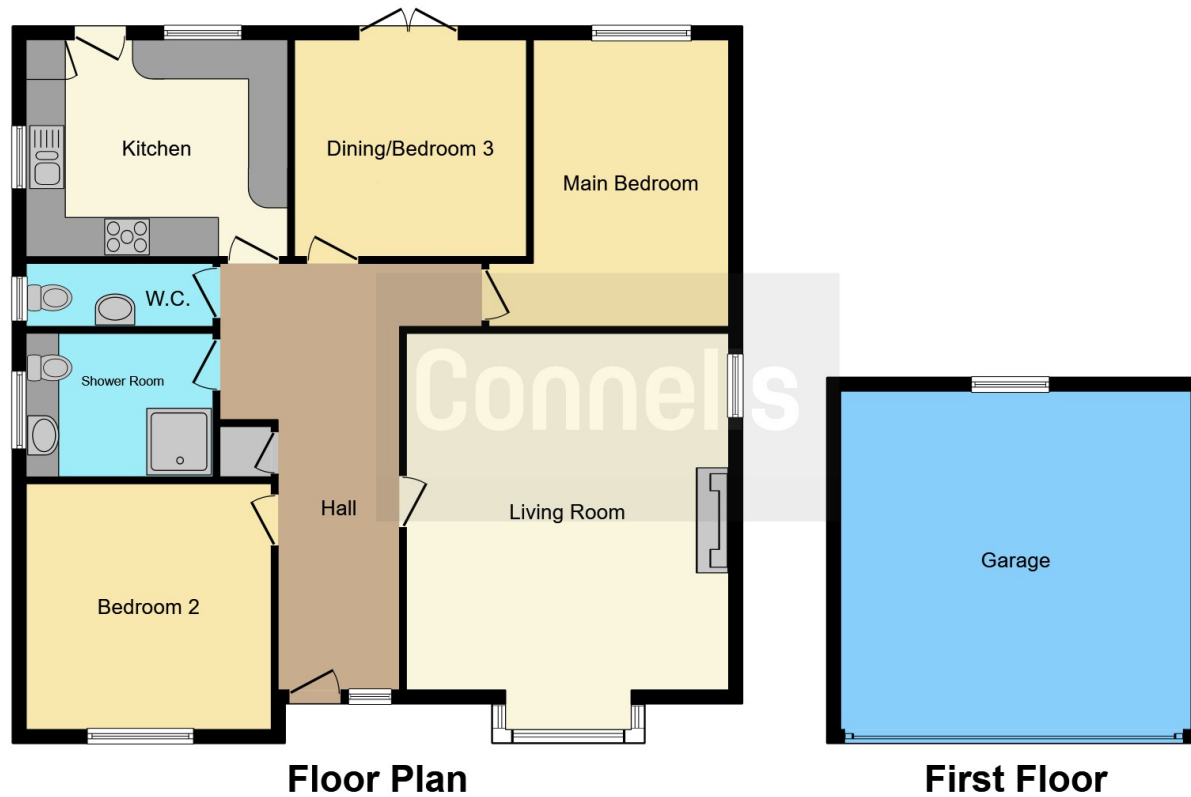
17' 6" x 16' 9" (5.33m x 5.11m)

A detached double garage with an up-and-over door offers secure storage for vehicles and equipment.









This floor plan is for illustrative purposes only. It is not drawn to scale. Any measurements, floor areas (including any total floor area), openings and orientation are approximate. No details are guaranteed, they cannot be relied upon for any purpose and they do not form part of any agreement. No liability is taken for any error, omission or misstatement. A party must rely upon its own inspection(s). Powered by www.focalagent.com

To view this property please contact Connells on

T 01794 830 833
E romsey@connells.co.uk

13a The Hundred
 ROMSEY SO51 8GD

EPC Rating: C Council Tax
 Band: D

Tenure: Freehold

view this property online connells.co.uk/Property/ROM306801



1. MONEY LAUNDERING REGULATIONS Intending purchasers will be asked to produce identification documentation at a later stage and we would ask for your co-operation in order that there will be no delay in agreeing the sale. 2. These particulars do not constitute part or all of an offer or contract. 3. The measurements indicated are supplied for guidance only and as such must be considered incorrect. Potential buyers are advised to recheck measurements before committing to any expense. 4. We have not tested any apparatus, equipment, fixtures, fittings or services and it is in the buyers interest to check the working condition of any appliances.

Connells Residential is registered in England and Wales under company number 1489613, Registered Office is Cumbria House, 16-20 Hockliffe Street, Leighton Buzzard, Bedfordshire, LU7 1GN. VAT Registration Number is 500 2481 05.

See all our properties at www.connells.co.uk | www.rightmove.co.uk | www.zoopla.co.uk

Property Ref: ROM306801 - 0014