



Egerton Gardens Mews, London SW3
Price £750 per week - Furnished







Description

A beautifully presented fourth floor apartment (no lift) in this quiet mews in the heart of Knightsbridge. The property comprises one double bedroom, one bathroom, reception room with open plan kitchen and utility room. The flat is presented in excellent order and further benefits from wooden flooring in the reception room and contemporary furnishings.

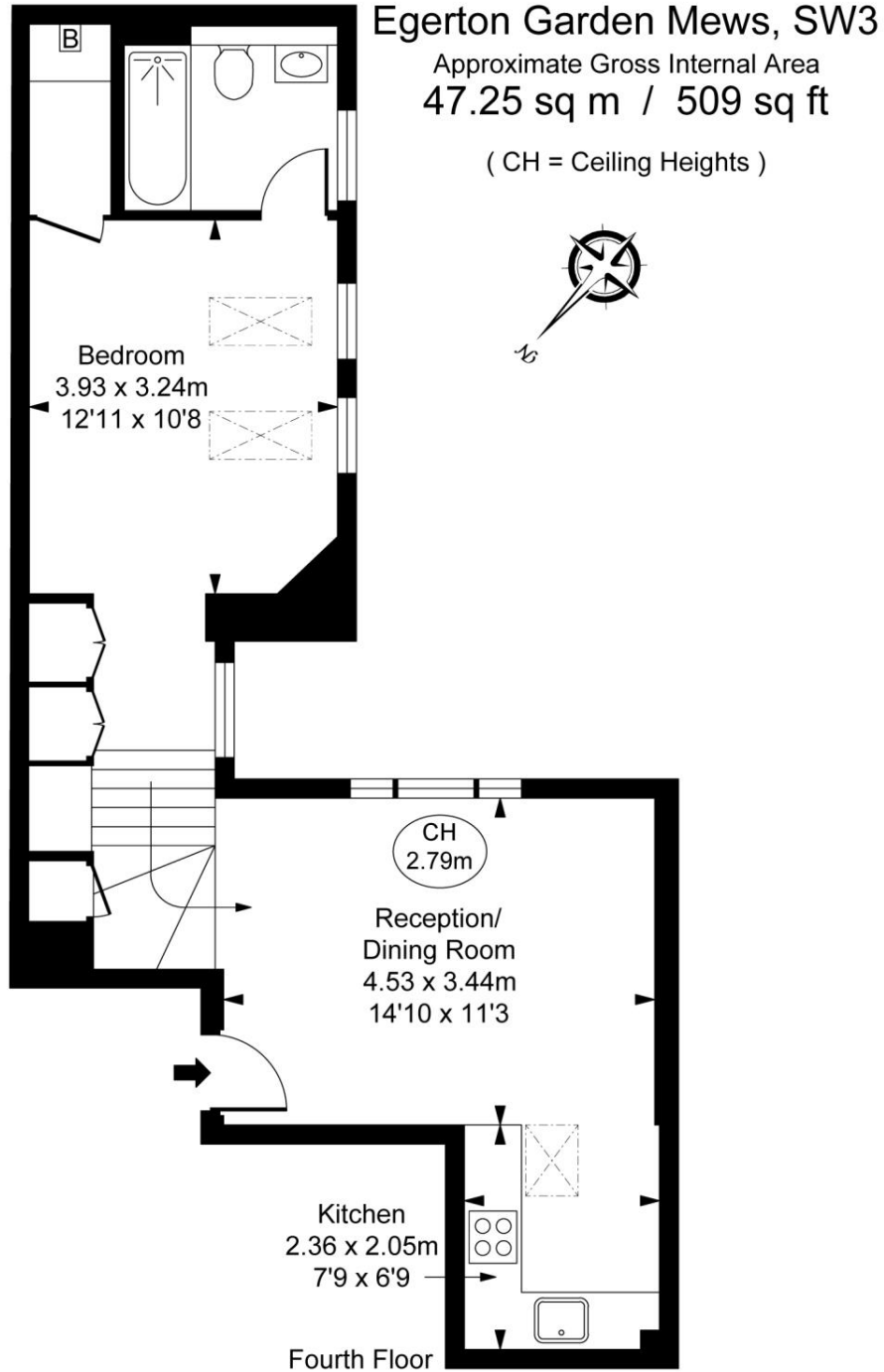
Egerton Gardens Mews is conveniently located moments from the many shopping and transport facilities of Knightsbridge and South Kensington.

Council tax band: D. Rent is payable on a monthly basis, and you may be required to pay more than a month's rent in advance for tenancies with annual rents exceeding £100,000. You will be required to pay a 1 week holding deposit following a successful offer. Tenancies with annual rents up to £50,000 will require a 5 weeks' security deposit, while those exceeding this threshold will require a 6 weeks' deposit. Utility bills, council tax, telephone line and broadband are not included in the rent. As well as paying the rent, you may also be required to make some additional permitted payments. If your tenancy does not qualify as an APT, additional fees may apply. Please visit jll.co.uk/fees for details of fees that may be payable when renting a property. To check broadband and mobile phone coverage please visit Ofcom here ofcom.org.uk/phones-telecoms-and-internet/advice-for-consumers/advice/ofcom-checker

- Furnished flat
- 1 Double bedroom
- 1 Bathroom
- Reception room
- Open plan kitchen
- Utility room
- Fourth floor (no lift)
- EPC: C
- Council tax: Band D
- Deposit: £3,750

Floorplan

509 sq ft | 47 sq m



This plan is not to scale. It is for guidance and not for valuation purposes.
All measurements and areas are approximate only, and have been prepared in accordance with the current edition of the RICS Code of Measuring Practice.
© Fulham Performance

Chelsea
2 Cale Street,
London SW3 3QU
+4420 7399 5010
saleschelsea@jll.com

Urban living, your way.

jll.co.uk/residential

© 2019 Jones Lang LaSalle IP, Inc. All rights reserved. All information contained herein is from sources deemed reliable; however, no representation or warranty is made to the accuracy thereof.

