

Elm Grove, SW19

£375,000

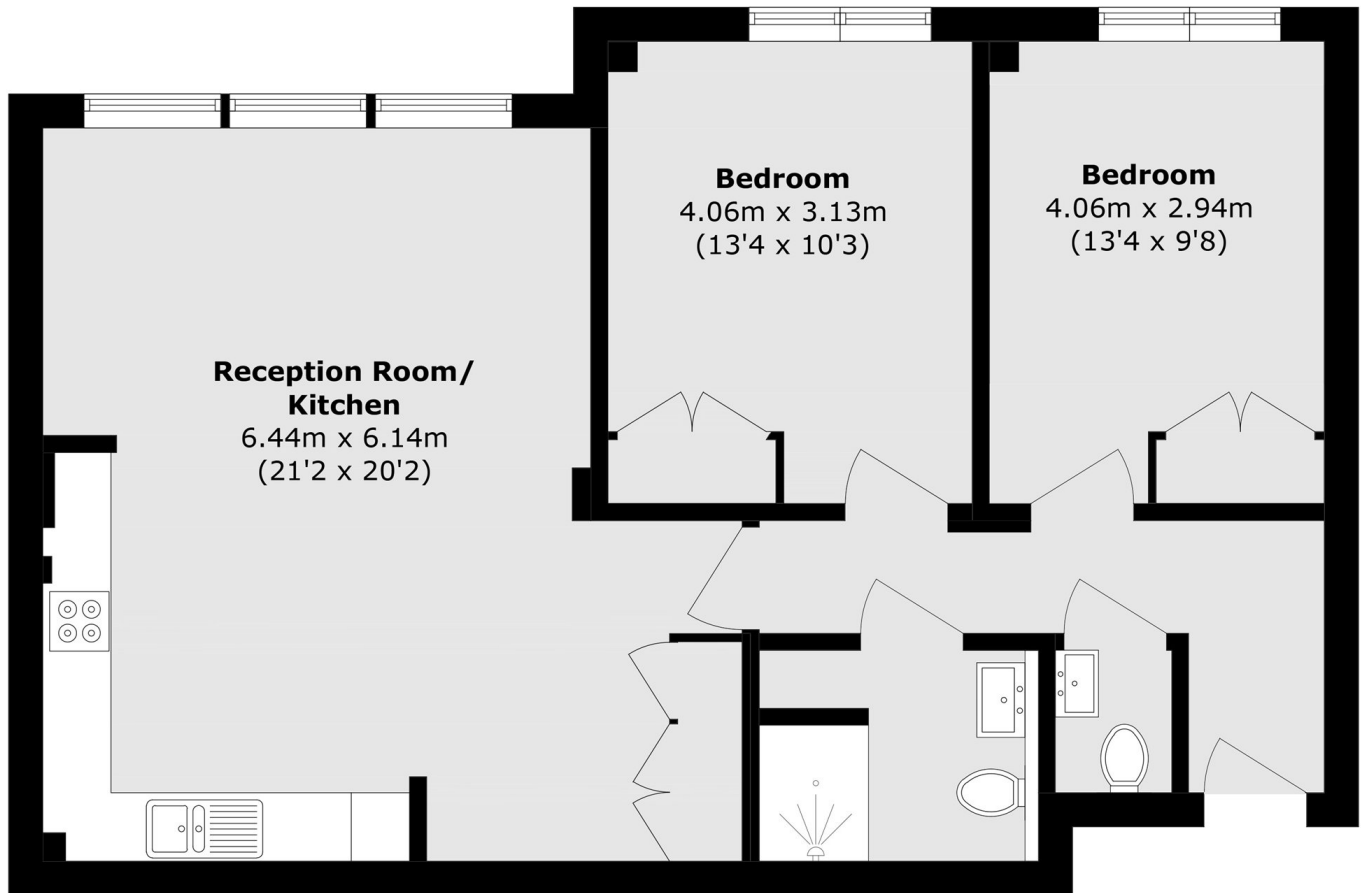
A two double bedroom purpose built apartment, located on one of the upper floors of this modern development with far reaching views. The apartment has a lift, a long lease and measure over 810 square feet.

Elm Grove is a cul-de-sac situated just off of Worple Road and just under half a mile walk from Wimbledon Broadway allowing easy access to the town centre's restaurants and shops. Transport links include overground, underground and a number of good bus routes.

Features

- Two Double Bedrooms
- Upper Floor
- Lift To All Floors
- Long Lease
- Purpose Built
- Far Reaching Views

Elm Grove, Wimbledon, SW19



Total area (approx.): 75.7 sq. m (814.8 sq. ft)