



Flat 3502, 1 Pan Peninsula Square, London, E14 9HL
£1,100,000



Flat 3502, 1 Pan Peninsula Square, London, E14 9HL

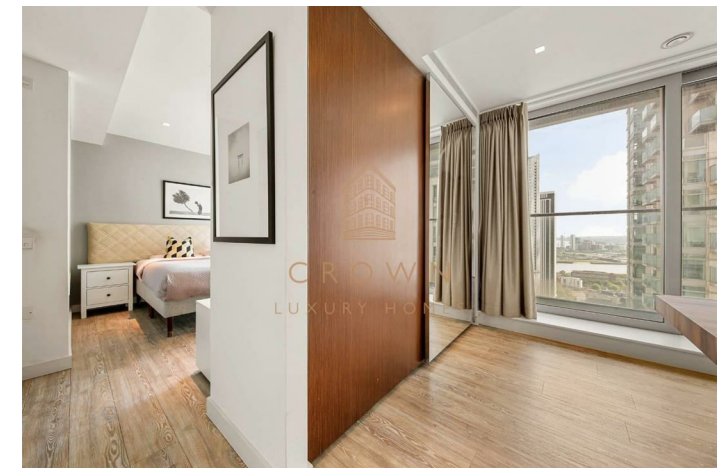
£1,100,000

35th Floor | Open Plan | 24/7 Concierge | Gym | Swimming Pool | Spa Facilities | Cinema Room | Cocktail Bar
| 3x Balconies | Tremendous Views | Great Transport Links | WeChat: CLH-Consultant.

Description



Situation

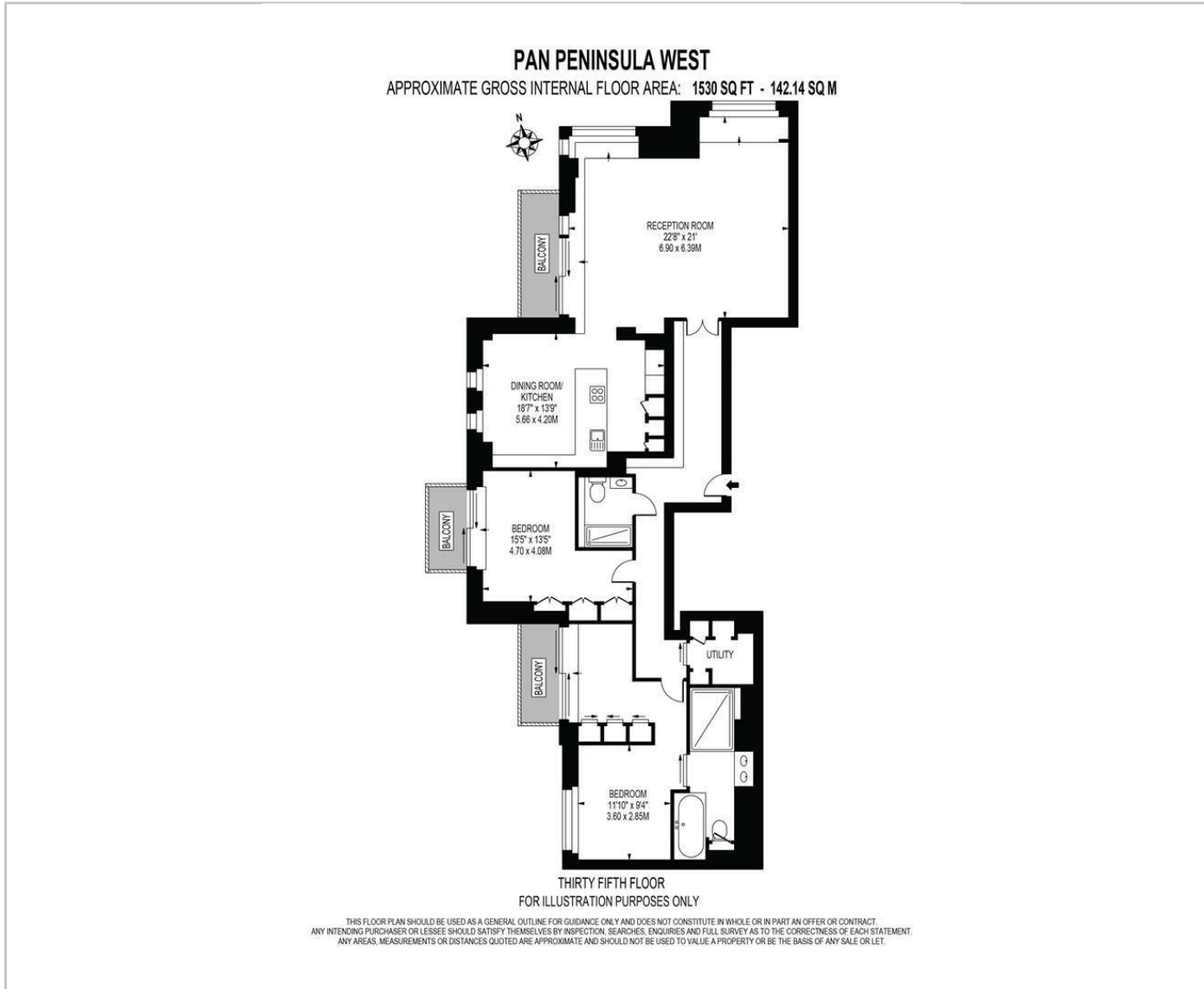


null

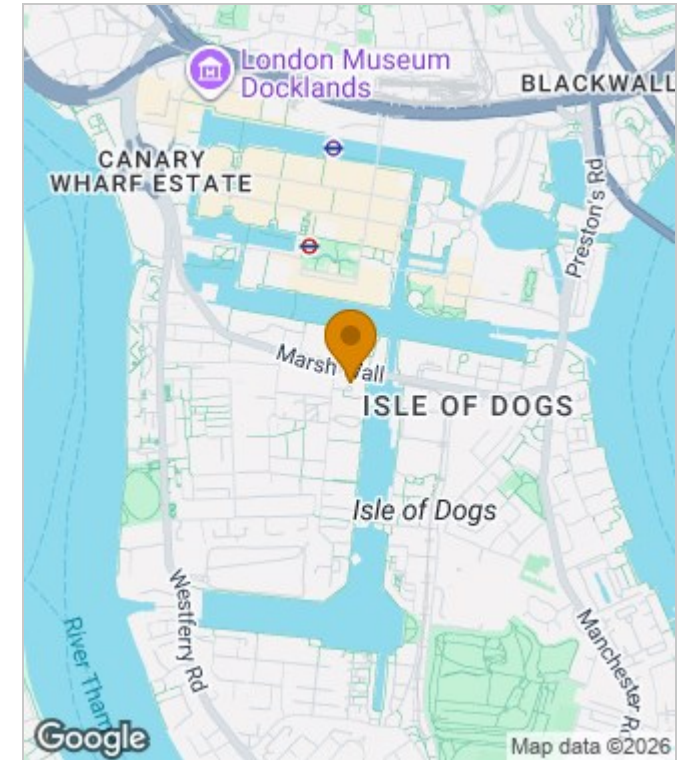
Council Tax Band: H

Available:

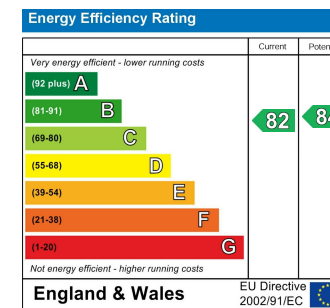
Floor Plans



Area Map



Energy Performance Graph



These particulars, whilst believed to be accurate are set out as a general outline only for guidance and do not constitute any part of an offer or contract. Intending purchasers should not rely on them as statements of representation of fact, but must satisfy themselves by inspection or otherwise as to their accuracy. No person in this firm's employment has the authority to make or give any representation or warranty in respect of the property.