

Parkheath

Sold on Service

Newcastle Place W2

£13,867 PCM (£3200 per week) - Westminster Band H



Sensational 3 double bedroom luxury apartment
2 private balconies with breathtaking skyline views
L-shaped wood floor reception with dining area
Magnificent principle bedroom suite
Close proximity to Edgware Road and Paddington stations

2056 sq ft / 191 sq m approx of lateral accommodation
Exquisite decoration and furnishings throughout
High end kitchen with top of the range appliances
Residents swimming pool, gym and spa
EPC: Rating B, Council Tax: Westminster band H

Belsize Park Office 020 7431 3104

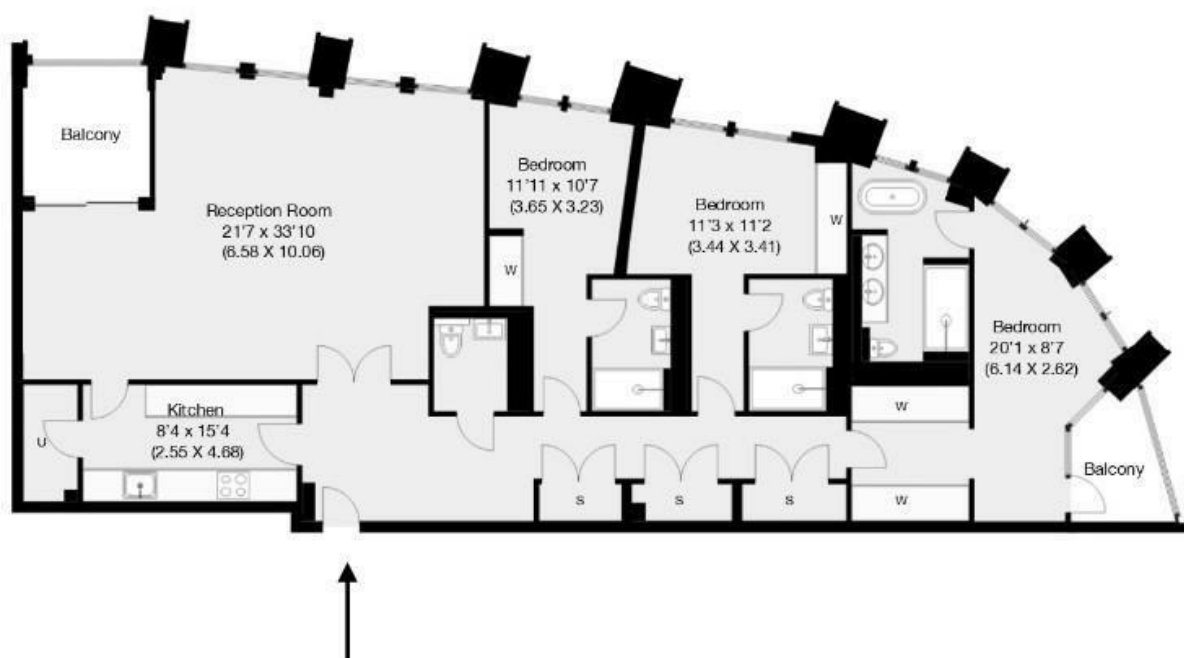


Newcastle Place, London, W2

Approximate Gross Internal Area 191 sqm / 2056 sqft



N



Twenty Eighth Floor

THIS FLOOR PLAN IS PRODUCED FOR PARKHEATH SUBMITTED BY ARCHIMEDIA web: www.archi-media.co.uk

Whilst every attempt has been made to ensure the accuracy of the floor plan contained here, measurements of doors, windows and rooms are approximate and no responsibility is taken for any error, omission or misstatement. These plans are for representation purposes only and should be used as such by any prospective buyer or lease. Specifically no guarantee is given on the gross internal floor area of the property if quoted on this plan and any figures given is initial guidance only and should be treated as such.

The particulars do not constitute part of an offer or contract. The particulars, including text, photographs and plans, are for the guidance only of prospective purchasers/tenants and must not be relied upon as statements of fact. The descriptions provided therein represent the opinion of the author and whilst given in good faith should not be construed as statements of fact. Nothing in these particulars shall be deemed a statement that the property is in good condition or otherwise or that any services or facilities are in good working order. All measurements are approximate