

Unit 6 13 Burton Place, Manchester, Lancashire, M15 4PT
Tel: 0161 637 8336
Email: contactus@ascendproperties.com
www.ascendproperties.com

Ascend

Built on higher standards



Malvern Grove, Manchester

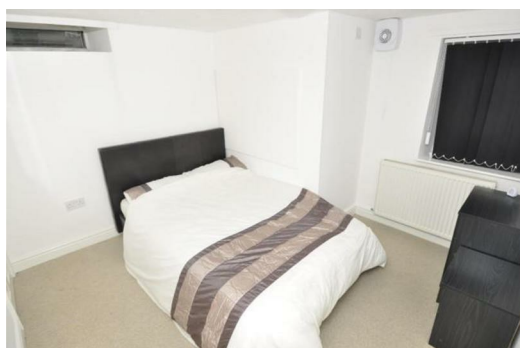
£850 PCM

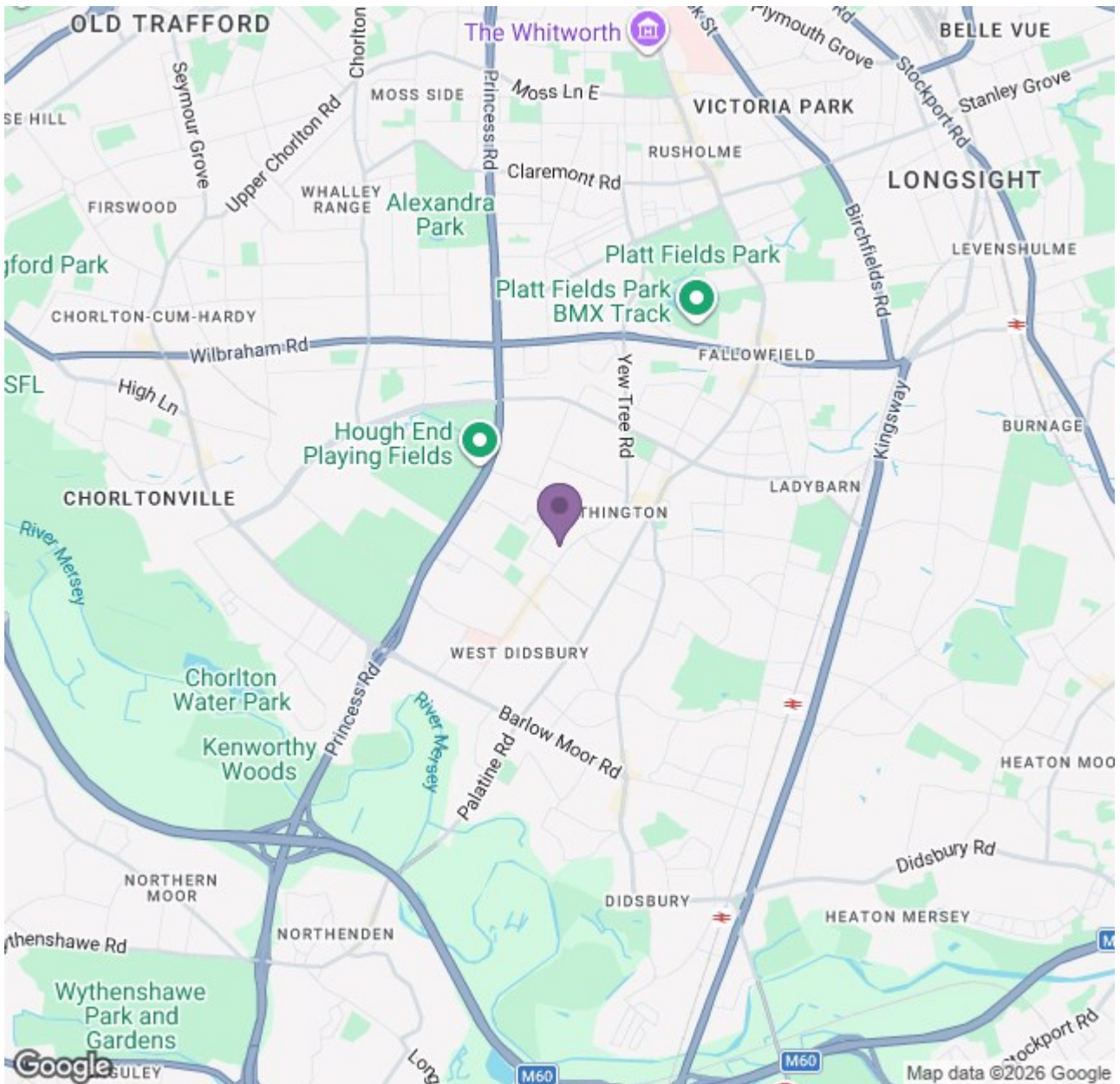
Nestled right in the heart of one of Manchester's most sought-after neighbourhoods, this one-bedroom apartment offers all the charm of a leafy suburban retreat while still boasting an unbeatable central location. It's also just a few minutes' stroll from West Didsbury's stylish bars and vibrant dining scene.

Complete with a spacious living area, fully fitted kitchen, modern bathroom and bedroom, what more could you possibly want from an apartment? Not only will you have your homely comforts, you'll also have top notch bus, rail and Metrolink facilities - the entire Manchester world (and beyond...) is your oyster. The delights of the city centre are a short ride away - as is the airport, if you fancy jetting off to sunnier climates. If you know your hotspots, you'll know that properties in locations like this don't get much better.

This apartment won't be on the market for long so if you're interested in having a closer look, or have any questions, do get in touch. And just so you know, the pictures for this apartment are for marketing purposes only. The internal fixtures, fittings and furnishings may vary.

Available 12th March 2026
Deposit: £980
Council Tax Band: A
12 Month Tenancy





Energy Efficiency Rating				Environmental Impact (CO ₂) Rating			
Rating	Score	Band	Score	Rating	Score	Band	Score
A	92-100	A	100	A	100	A	100
B	81-91	B	90	B	90	B	90
C	69-80	C	74	C	74	C	74
D	69-80	D	65	D	65	D	65
E	55-68	E	57	E	57	E	57
F	45-54	F	45	F	45	F	45
G	35-44	G	35	G	35	G	35