



## Flat 15, Mary Rose Court 20-21 South Parade , Southsea, PO5 2JD

**£950 Per month**

1 Bedroom Flat | Incredible Southsea Location | Close to the Beach | Close to Local Amenities | Available Now | Permit Parking and Bike Hangers | Viewings from Tuesday 14th July 2026 | EPC Rating C | Council Tax Band A

Viewing

Please contact our ROK Marsh Office on 02393233267 if you wish to arrange a viewing appointment for this property or require further information.



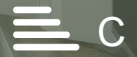
1



1

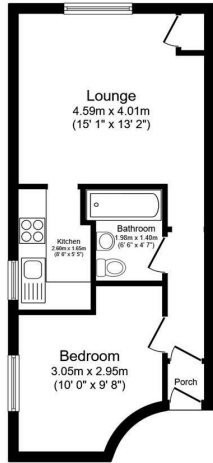


1



C

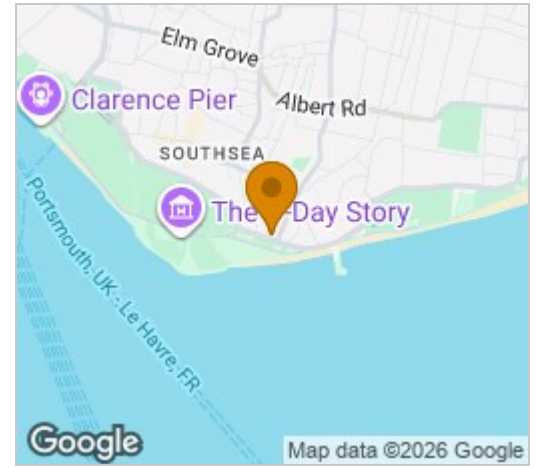
# Floor Plan



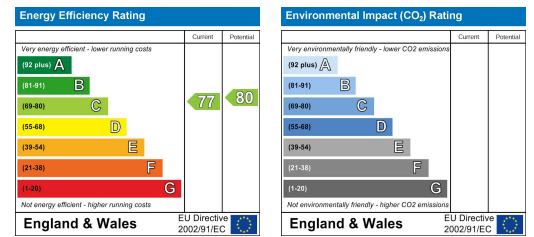
Total floor area 35.7 sq.m. (385 sq.ft.) approx

This floor plan is for illustrative purposes only. It is not drawn to scale. Any measurements, floor areas (including any total floor area), openings and orientations are approximate. No details are guaranteed, they cannot be relied upon for any purpose and do not form any part of any agreement. No liability is taken for any error, omission or misstatement. A party must rely upon its own inspection(s). Powered by www.Propertybox.io

# Area Map



# Energy Efficiency Graph



These particulars, whilst believed to be accurate are set out as a general outline only for guidance and do not constitute any part of an offer or contract. Intending purchasers should not rely on them as statements of representation of fact, but must satisfy themselves by inspection or otherwise as to their accuracy. No person in this firm's employment has the authority to make or give any representation or warranty in respect of the property.