



La Maison Blanche

Rue De La Blanche Pierre



La Maison Blanche, Rue De La Blanche Pierre, St Lawrence, JE3 1EA

This most exceptional residence, recognised among the finest of the island of Jersey's most prestigious homes, was constructed at the instance of the present vendor family, on a virtually 'without regard to cost' basis.

Set on the heights above the island's South coast and commanding truly magnificent South facing sea views over St Aubin's Bay and the coastal approaches, La Maison Blanche occupies a most enviable site in one of Jersey's most sought-after locations. The property stands located only a few minutes' drive from the island's capital town and is within only a short commute to the airport and other central amenities.

Of a most distinctive continental architectural style, this stunning family home provides an extensive itinerary of sumptuously appointed spacious accommodation (extending in total to approaching some 13,500 sq.ft.) and including an extensive leisure complex, which offers a magnificent indoor swimming pool complex, gymnasium, entertaining bar and cinema room, together with 2 integral self-contained guest and staff apartments.

Since original construction the property has always been maintained to the highest of standards and a very comprehensive scheme of top-quality updating, and improvement has just been professionally executed, involving a major portion of the accommodation.

Externally, La Maison Blanche stands approached via its own impressively gated driveway, together with manageably proportioned landscaped gardens with outdoor swimming pool facility and extensive leisure terraces offering the finest of sea views. Additionally, there is a small portion of adjacent agricultural land in the ownership of La Maison Blanche.



Parish: St Helier

Qualification: Qualified

Tenure: Freehold

Price £19,000,000



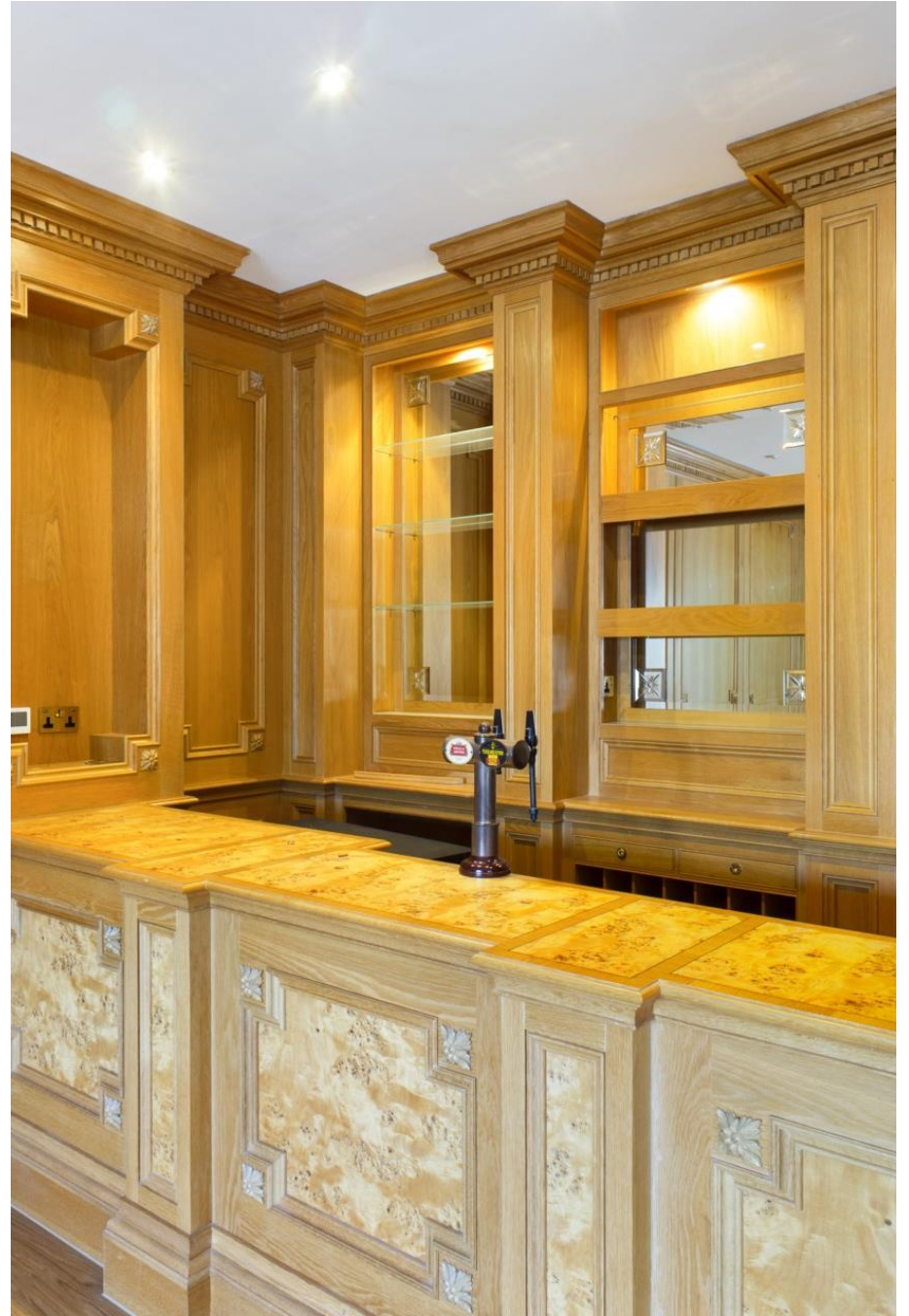
- Magnificent south facing sea views
- Highest quality
- Exclusive premier location
- Sumptuous accommodations
- Indoor, plus outdoor swimming pools

















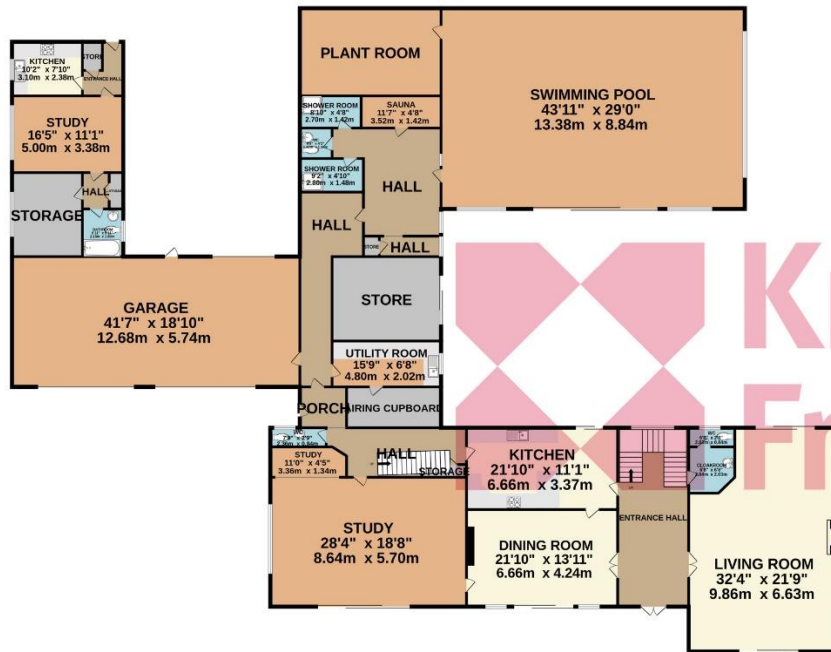








GROUND FLOOR
6047 sq.ft. (561.8 sq.m.) approx.



1ST FLOOR
2776 sq.ft. (257.9 sq.m.) approx.



TOTAL FLOOR AREA : 8823 sq.ft. (819.7 sq.m.) approx.

Whilst every attempt has been made to ensure the accuracy of the floorplan contained here, measurements of doors, windows, rooms and any other items are approximate and no responsibility is taken for any error, omission or mis-statement. This plan is for illustrative purposes only and should be used as such by any prospective purchaser. The services, systems and appliances shown have not been tested and no guarantee as to their operability or efficiency can be given.
Made with Metropix ©2026

Approximate Gross Internal Area = 13414 sq ft

This plan is for layout guidance only. Not drawn to scale unless stated. Windows and door openings are approximate. Whilst every care is taken in the preparation of this plan, please check all dimensions, shapes and compass bearings before making any decisions reliant upon them.

Services

Mains water

Mains drains

Oil fired central heating

+441534 877977

Knight Frank Jersey

37-39 Halkett Place, St. Helier, Jersey JE2 4WG

knightfrank.je

Your partners in property

1. Particulars: These particulars are not an offer or contract, nor part of one. You should not rely on statements given by Knight Frank Jersey in the particulars, by word of mouth or in writing (“information”) as being factually accurate about the property, its condition or its value. Neither Knight Frank Jersey nor any joint agent has any authority to make any representations about the property, and accordingly any information given is entirely without responsibility on the part of Knight Frank Jersey. 2. Material Information: Please note that the material information is provided to Knight Frank Jersey by third parties and is provided here as a guide only. While Knight Frank Jersey has taken steps to verify this information, we advise you to confirm the details of any such material information prior to any offer being submitted. If we are informed of changes to this information by the seller or another third party, we will use reasonable endeavours to update this as soon as practical. 3. Photos, Videos etc: The photographs, property videos and virtual viewings etc. show only certain parts of the property as they appeared at the time they were taken. Areas, measurements and distances given are approximate only. 4. Regulations etc: Any reference to alterations to, or use of, any part of the property does not mean that any necessary planning, building regulations or other consent has been obtained. A buyer must find out by inspection or in other ways that these matters have been properly dealt with and that all information is correct. 5. Fixtures and fittings: A list of the fitted carpets, curtains, light fittings and other items fixed to the property which are included in the sale (or may be available by separate negotiation) will be provided by the Seller’s Lawyer. Particulars dated 03/09/2025. All information is correct at the time of going to print.

