



Oakfield Glade, Weybridge, KT13 9DP



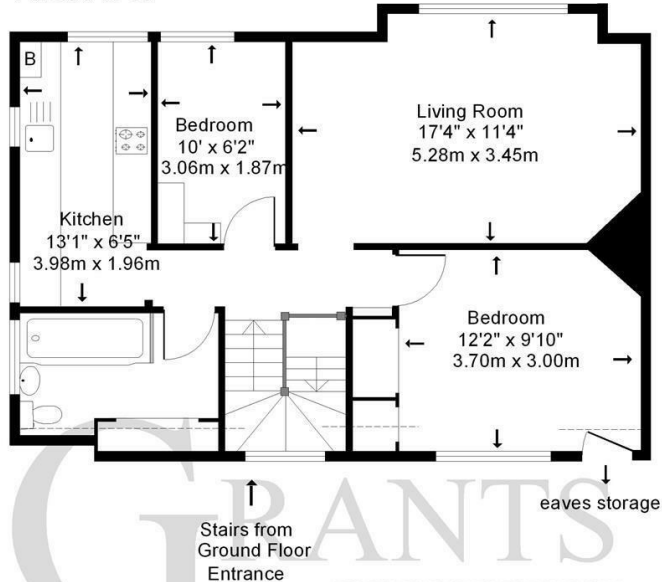


This two bedroom first floor maisonette is situated at the beginning of a highly sought after private road in central Weybridge, convenient for the mainline railway station, Queens Road shops, and the High Street. A wonderful staircase rises and turns past a stained glass window to a galleried landing which forms the centre of the property. From this landing there is access to a good sized living room, modern fitted kitchen with space for a dishwasher, two bedrooms and the bathroom.

The property is offered to the market unfurnished.



## First Floor



Not to scale

Approximate Gross Internal Floor Area: 60m sq (645sq ft)

Whilst every attempt has been made to ensure the accuracy of this floor plan, room sizes and measurements are approximate and accordingly should not be relied upon for carpets and furnishings. These plans are for representation purposes only and no responsibility can be given for errors and omissions.

© Drawing Rooms 2017

EPC Rating: 64 D



Grants Homes 60 Church Street, Weybridge, Surrey, KT13 8DL  
T: 01932 841020 E: [lettings@grantshomes.co.uk](mailto:lettings@grantshomes.co.uk)

