



Greenside, Cottam, Preston, PR4

Preston

£120,000



SANDIP SINGH
exp

Bedrooms: 2 | **Bathrooms:** 1 | **Receptions:** 1

Situated within the highly desirable residential area of Cottam, this beautifully presented top floor apartment offers modern and spacious accommodation ideally suited to first-time buyers, professionals, downsizers and investors alike. Conveniently located within easy reach of local amenities, supermarkets, schools and transport links, the property provides comfortable low-maintenance living within a popular and well-established development. Further benefitting from elevated views, a substantial loft storage space, private resident parking and being offered to the market with no onward chain, this attractive home presents an excellent opportunity for a wide range of purchasers.

Upon entering the property, you are welcomed by a central entrance hallway providing access to all principal accommodation. The heart of the home is the impressive open-plan lounge, dining and kitchen area, creating a bright and sociable living environment perfectly suited to both everyday living and entertaining. Occupying a top-floor position, the living space enjoys an abundance of natural light together with pleasant elevated views across the surrounding area, creating a bright and airy atmosphere throughout. The dining area comfortably accommodates a family dining table, whilst the modern fitted kitchen offers a range of wall and base units, ample worktop space, an integrated electric oven and hob, together with designated space for a fridge freezer and washing machine.

The accommodation further comprises two well-proportioned bedrooms, with the principal bedroom benefitting from the added luxury of a contemporary en-suite shower room. The second double bedroom offers excellent versatility and could be utilised as a guest bedroom, home office or additional reception space depending on individual requirements. A modern three-piece family bathroom completes the internal accommodation and comprises a bath with shower over, wash hand basin and WC.

A particularly noteworthy feature of the property is the generous loft space, which is easily accessible and provides excellent additional storage rarely found within apartment living. This practical addition further enhances the property's appeal and functionality for a variety of purchasers.

Externally, the property benefits from private resident parking located to the rear of the building, together with well-maintained communal areas serving the development.

Combining spacious accommodation, modern presentation, elevated views and exceptional storage facilities with a highly convenient location, this impressive top-floor apartment represents an ideal purchase for those seeking a ready-to-move-into home or a strong investment opportunity. Early viewing is highly recommended to fully appreciate the accommodation and lifestyle opportunity on offer.

REF: SS1664

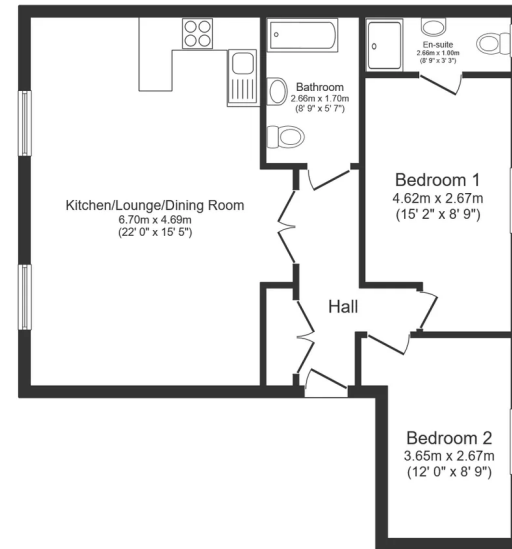
Tenure: Leasehold

Property Type: Apartment

- Highly desirable Cottam location
- Beautifully presented top-floor apartment
- Two double bedrooms
- Principal bedroom with modern en-suite shower room
- Spacious open-plan lounge, dining & kitchen area
- Elevated views across the surrounding area
- Generous, easily accessible loft storage space
- Private resident allocated parking
- REF: SS1664







Floor Plan

Total floor area: 64.8 sq.m. (697 sq.ft.)

This floor plan is for illustrative purposes only. It is not drawn to scale. Any measurements, floor areas (including any total floor area), openings and orientations are approximate. No details are guaranteed, they cannot be relied upon for any purpose and do not form any part of any agreement. No liability is taken for any error, omission or misstatement. A party must rely upon its own inspection(s). Powered by www.Propertybox.io