



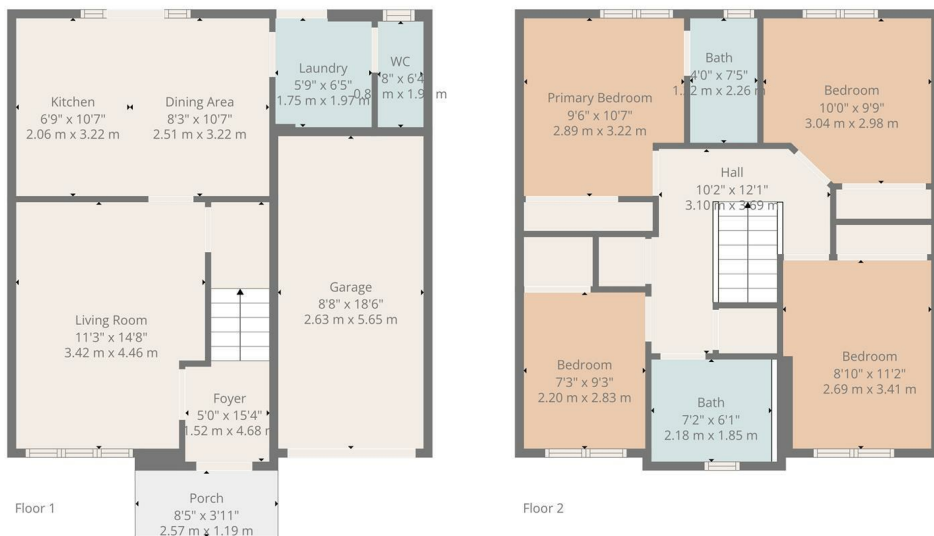
HEMMINGS HOMES

FIXED ASKING PRICE

£330,000

Viscount Terrace

Glasgow, G74 4FX



TOTAL: 1072 sq. ft, 100 m²
 FLOOR 1: 448 sq. ft, 42 m², FLOOR 2: 624 sq. ft, 58 m²
 EXCLUDED AREAS: GARAGE: 160 sq. ft, 15 m², PORCH: 33 sq. ft, 3 m², WALLS: 116 sq. ft, 10 m²
Floor Plan Created By Cubicasa App. Measurements Deemed Highly Reliable But Not Guaranteed.



Energy Efficiency Rating		
	Current	Potential
Very energy efficient - lower running costs		
(92 plus) A		
(81-91) B		
(69-80) C		
(55-68) D		
(39-54) E		
(21-38) F		
(1-20) G		
Not energy efficient - higher running costs		
Scotland	EU Directive 2002/91/EC	



Agents Note: Whilst every care has been taken to prepare these particulars, they are for guidance purposes only. All measurements are approximate and are for general guidance purposes only and whilst every care has been taken to ensure their accuracy, they should not be relied upon and potential buyers/tenants are advised to recheck the measurements



OFFICE ADDRESS
 376 Brandon Street
 Motherwell
 North Lanarkshire
 ML1 1XA

OFFICE DETAILS
 01698 263413
enquiries@hemmingshomes.co.uk
hemmingshomes.co.uk