



Lion Road, TW1

£720,000

A charming two/ three bedroom period home in this sought after road in Twickenham.

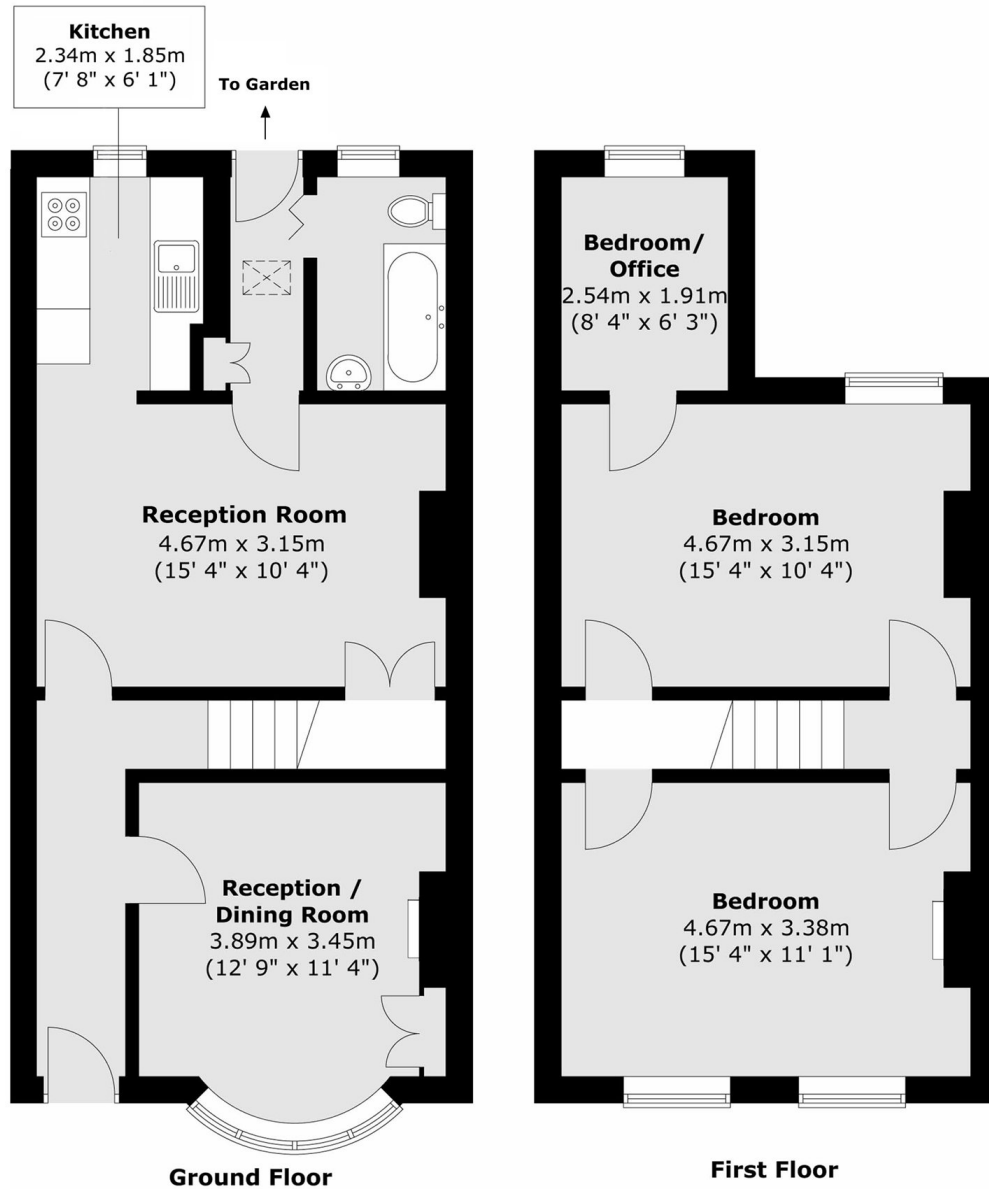
To the ground floor there are two reception rooms, a galley kitchen and a bathroom. Upstairs there are two great sized double bedrooms and a further single/office. Further benefits include a good sized west facing rear garden, original features and there is scope to modernise and extend (STPP).

Lion Road is a sought after road in central Twickenham located just 0.6 miles to Twickenham Station and only 0.3 miles to Twickenham Green.

- Two/Three Bedrooms • Sought After Road • Period Cottage •
- Close to Station • Potential to Extend (STPP) • Excellent School Catchments •

SNELLERS

ESTATE AGENTS



Total area (approx.) : 89.9 sq. m (967 sq. ft)

Snellers Twickenham Sales
64-66 Heath Road
Twickenham
TW1 4BX
020 8892 5555
twickenhamsales@snellers.co.uk

Energy Rating: C We aim to make our particulars both accurate and reliable. However they are not guaranteed; nor do they form part of an offer or contract. If you require clarification on any points then please contact us, especially if you're traveling some distance to view. Please note that appliances and heating systems have not been tested and therefore no warranties can be given as to their good working order