



St. Georges Court, St Albans,  
AL1



### Guide price £280,000

- Offered With No Chain Free
- Off Street Parking
- Close To Town Centre
- Close To Mainline Railway Station
- One Bedroom
- Spacious Apartment
- Leasehold
- EPC rating D



A well-presented and spacious one bedroom ground floor apartment situated just a short walk from both the City Centre and St Alban's mainline train station. The property benefits from off street parking.

Ideally located within walking distance of both the mainline train station and high street, is this well presented one bedroom ground floor apartment offered with no upper chain.

The property is set within an attractive character building, and comprises internally of an entrance hall, an open plan living/dining room, a double bedroom, and a modern family bathroom.

Externally the apartment is complemented by off street parking space, shared communal courtyard to the rear and is nearby to an abundance of shops/amenities, the open spaces of Clarence Park, the mainline train station and the city centre.

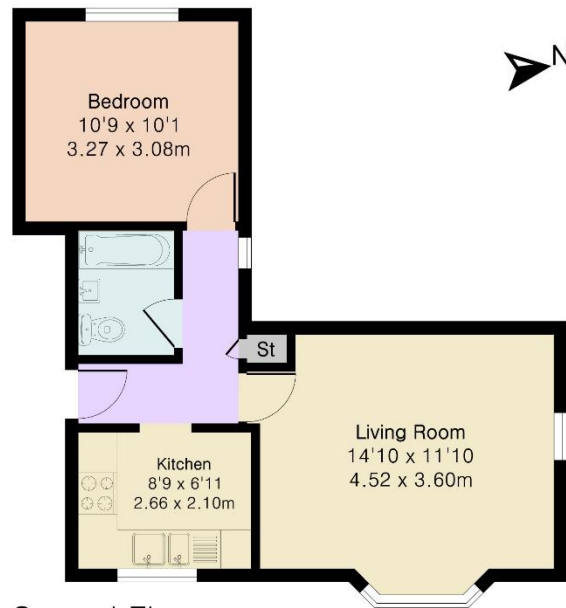
Length of lease - 88 years.

Ground rent - included in service charge.

Annual service charge - £1,746 per year including ground rent.



Approximate Gross Internal Area 445 sq ft - 41 sq m



Ground Floor



Northwood St Albans

01727 734550

stalbans@northwooduk.com