



Connells

Lysander Close
Bicester

Property Description

Positioned in a pleasant cul-de-sac location, this spacious and versatile semi-detached home offers well-presented accommodation ideally suited to modern family living.

The property welcomes you with an entrance hall leading into a generous living room, perfect for relaxing and entertaining and to the rear, the kitchen diner provides ample space for family meals and everyday living. A particularly flexible multi-use room, currently utilised as an additional bedroom, benefits from a spacious en-suite and could equally serve as a home office, playroom, or guest suite depending on individual requirements.

Upstairs, the property boasts three well-proportioned double bedrooms along with a family bathroom. Externally, there is a rear garden offering space to enjoy the outdoors, together with driveway parking to the front.

Conveniently positioned close to local amenities, well-regarded primary and secondary schools, and with excellent transport links within easy reach, this property combines comfort, practicality, and location in equal measure.



Entrance Hall

Laminate floor, built in storage, window to the side, door access to living room

Living Room

Laminate floor, window to the front of the property, access to kitchen diner, additional room and stairs

Kitchen Diner

Laminate floor, wall and base units, integrated double oven, five burner gas hob, space for dishwasher, fridge freezer, built in under stairs storage, window and door to rear garden, access to cloakroom

Cloakroom

Laminate floor, wc, basin, window to side of property

Additional Reception Room

Versatile room, laminate floor, built in storage, skylight window, window to rear garden, access to en-suite, door to rear garden.
En-suite- Walk in shower, wc, basin, window to front of property

Landing

Laminate floor, access to bedrooms and bathroom, loft access point

Bedroom One

Double bedroom, built in storage, above stairs storage, two windows to the rear of the property

Bedroom Two

Double bedroom, laminate floor, window to front of property

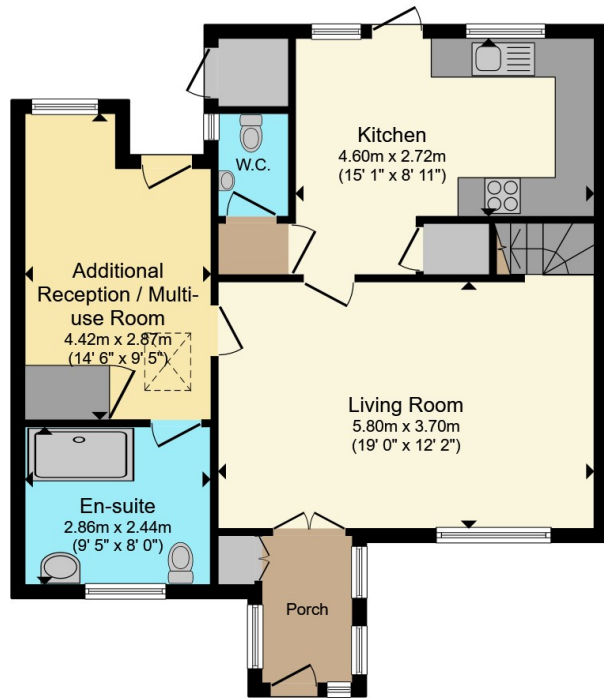
Bedroom Three

Double bedroom, laminate floor, window to front of property

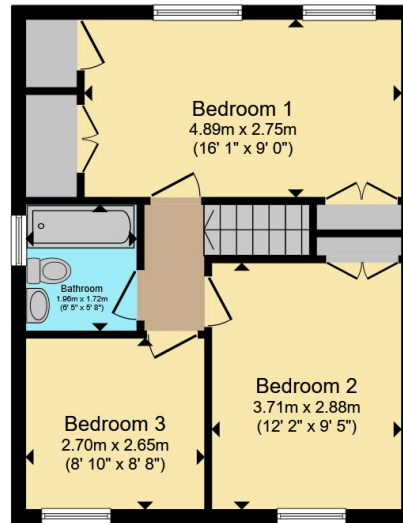
Bathroom

Laminate floor, partially tiled walls, bath with electric shower, wc, basin, window to side of property





Ground Floor



First Floor

Total floor area 111.8 m² (1,203 sq.ft.) approx

This floor plan is for illustrative purposes only. It is not drawn to scale. Any measurements, floor areas (including any total floor area), openings and orientation are approximate. No details are guaranteed, they cannot be relied upon for any purpose and they do not form part of any agreement. No liability is taken for any error, omission or misstatement. A party must rely upon its own inspection(s). Powered by www.propertybox.io



To view this property please contact Connells on

T 01869 244761
E bicester@connells.co.uk

5 Market Square
 BICESTER OX26 6AA

EPC Rating: D Council Tax Band: C

view this property online connells.co.uk/Property/BIC309745

Tenure: Freehold



1. MONEY LAUNDERING REGULATIONS Intending purchasers will be asked to produce identification documentation at a later stage and we would ask for your co-operation in order that there will be no delay in agreeing the sale. 2. These particulars do not constitute part or all of an offer or contract. 3. The measurements indicated are supplied for guidance only and as such must be considered incorrect. Potential buyers are advised to recheck measurements before committing to any expense. 4. We have not tested any apparatus, equipment, fixtures, fittings or services and it is in the buyers interest to check the working condition of any appliances.

Connells Residential is registered in England and Wales under company number 1489613, Registered Office is Cumbria House, 16-20 Hockliffe Street, Leighton Buzzard, Bedfordshire, LU7 1GN. VAT Registration Number is 500 2481 05.

See all our properties at www.connells.co.uk | www.rightmove.co.uk | www.zoopla.co.uk

Property Ref: BIC309745 - 0004