



## Bowen Drive, SE7

£325,000

With great proportions and plenty of natural light throughout, this one bedroom apartment has been decorated throughout to create a wonderful contemporary home and sold with no onward chain.

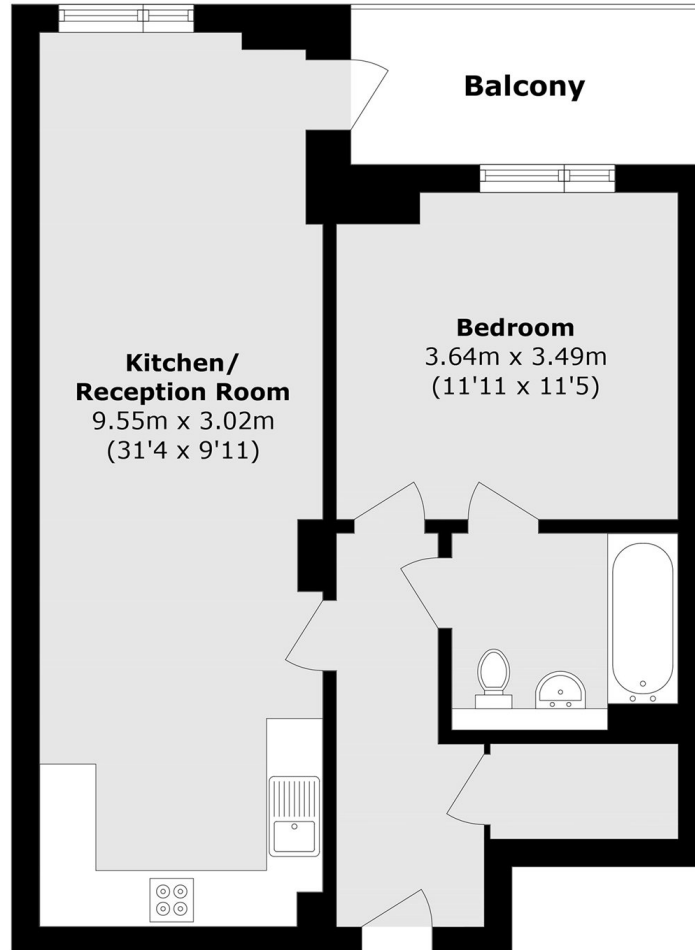
The property is entered via an inviting hallway with a useful storage cupboard, which leads into a large and sociable 18ft reception room opening onto a private balcony. This, together with the generous and well-fitted open-plan kitchen, creates a fantastic living space with plenty of room for a dining table. Elsewhere, there is a good-size double bedroom served by a stylish and well-appointed bathroom/WC.

Bowen Drive is located within easy reach of Greenwich Shopping Park, home to several supermarkets and a variety of shops whilst Westcombe Park and Charlton rail stations offer frequent rail connections into central London. North Greenwich for the Jubilee line is a short bus ride away.

### Features

- Chain Free
- Double Bedroom
- Decorated Beautifully
- Private Balcony
- Large/Kitchen Reception
- Close to Station

# Bowen Drive, London, SE7



Total area (approx.): 56.6 sq. m (609.2 sq. ft)

Balcony area (approx.): 5.0 sq. m (53.8 sq. ft)