



1 Hazel Way

, Yarm, TS15 9DA

Offers In Excess Of £325,000



Welcome to Hazel Way, an immaculate, detached home nestled within a popular development in the highly desirable area of Yarm. This property offers a unique blend of modernity and comfort, an ideal family home or for couples alike. This impressive residence briefly comprises of a spacious open plan kitchen/diner as well as lounge, three double bedrooms, master equipped with en-suite, main bathroom to first floor and downstairs WC located just off the hallway.

Location:
The property is ideally situated within easy access to the A1(M), A66 as well as A19 providing excellent links to major commercial centres and town. Nearby, Yarm Station offers a Northern Rail service which links to Darlington station on the East Coast mainline with regular services to Newcastle, Edinburgh, York and London while Teesside Airport is also of easy reach.

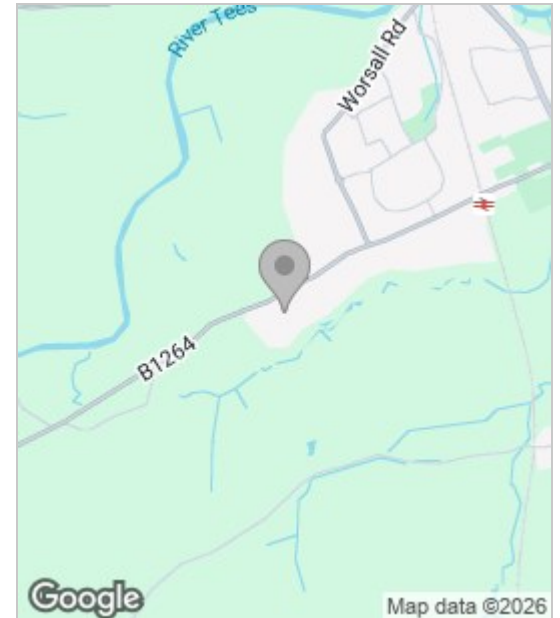


Greeted with an attractive frontage featuring exceptional brick work and a double width block paved driveway leading you to its integral garage. As you enter into the residence, you are met with a welcoming lengthy hallway which services the downstairs WC to immediate right and the rest of the impressive accommodation. Offering a showpiece open-plan shaker-style kitchen to dining with Bi-Fold doors to rear patio, this space is nothing short from a true gem. Benefitting from stand out fixtures and fitting as well as a convenient breakfast island, it comes integrated with gas hob, extractor fan as well as integrated fridge freezer. Blended seamlessly the lounge offers a spacious area for relaxation as well as an ideal entertainment room.

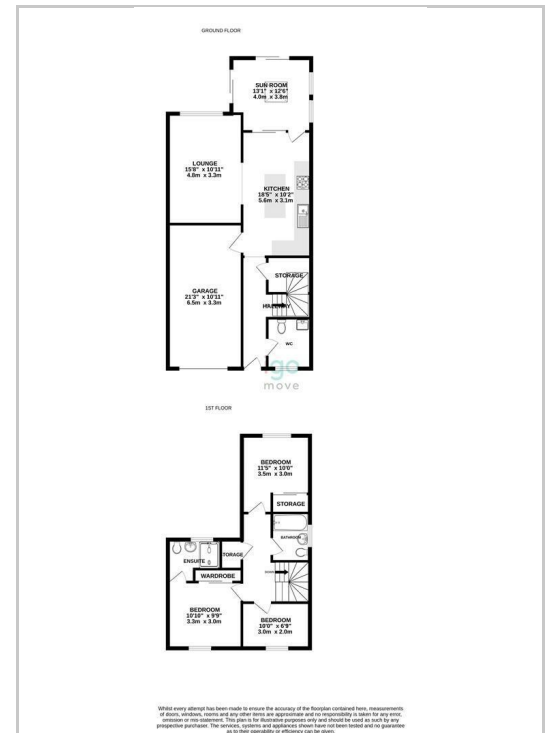
The first floor provides three well proportioned and beautiful appointed bedrooms, the master of which benefits from a pristine finish en-suite comprising of double walk in shower, WC & floating wash base unit. The modern main bathroom features a three piece suite which comprises of a fitted bath, overhead shower, floating wash base unit and WC.

Externally the property enjoys a southerly aspect rear garden with ample entertaining space as well as patio space for seating. Make this impressive hone your own and book your viewing today. Igomove are open 7 days a week.

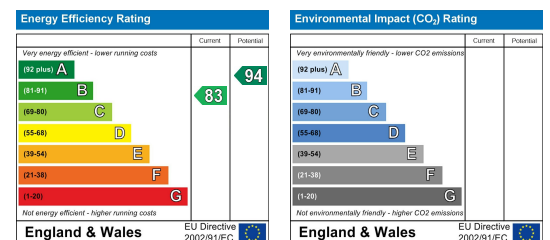
Area Map



Floor Plan



Energy Efficiency Graph



These particulars, whilst believed to be accurate are set out as a general outline only for guidance and do not constitute any part of an offer or contract. Intending purchasers should not rely on them as statements of representation of fact, but must satisfy themselves by inspection or otherwise as to their accuracy. No person in this firm's employment has the authority to make or give any representation or warranty in respect of the property.