






FOR SALE

**Burnham Road,
Leigh-On-Sea SS9 2JS**

£950,000 Freehold Council Tax Band -

4  3  2  sq ft

- Four Bedroom Detached Home
- Two Reception Rooms
- Three Bathrooms
- Ample Living Space Throughout
- Garage & Driveway For Two Cars
- Private Rear Garden
- High Standard Of Decor
- Viewings Highly Recommended
- Rare Opportunity
- Available November 2021

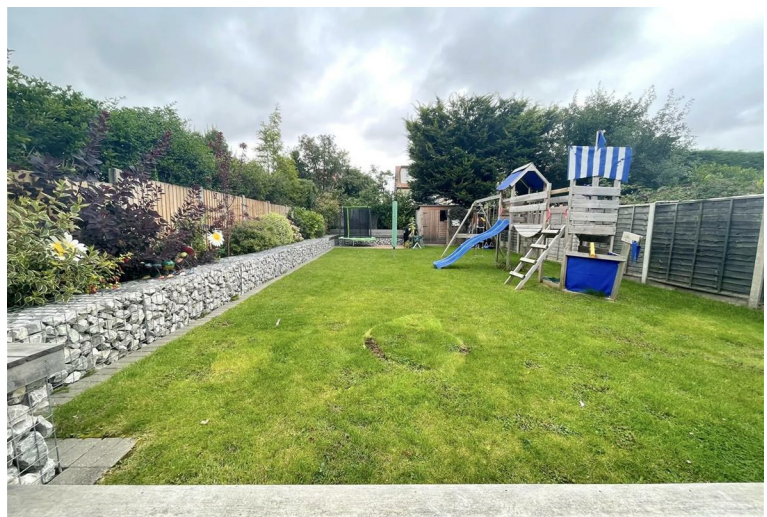
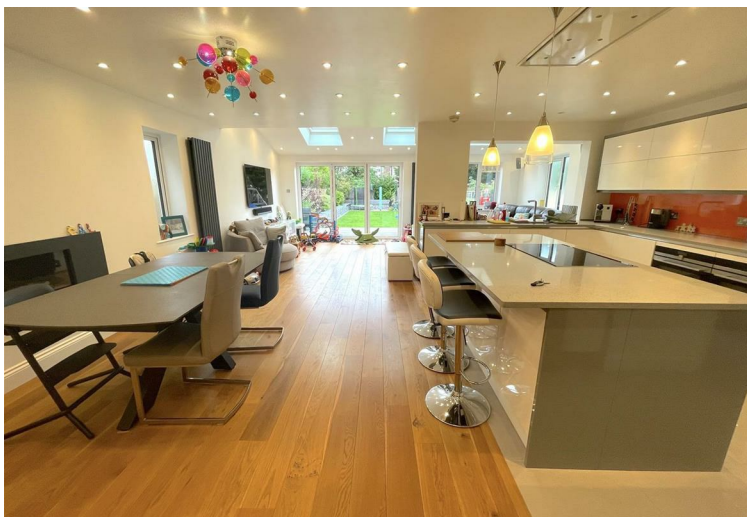
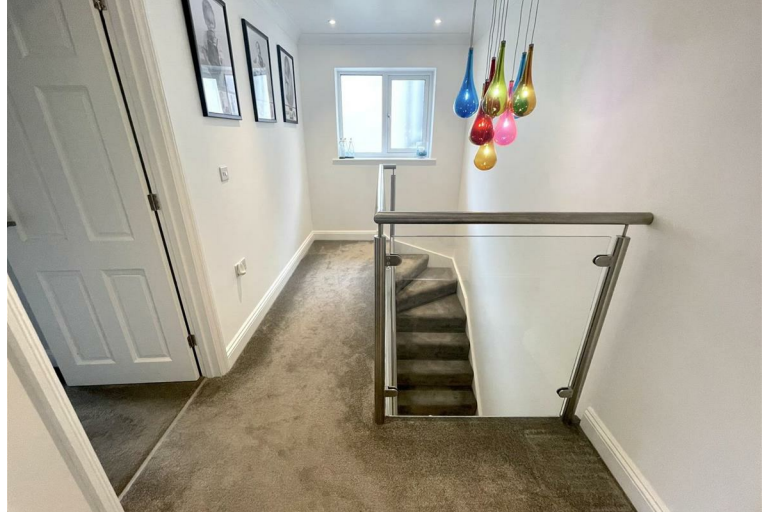
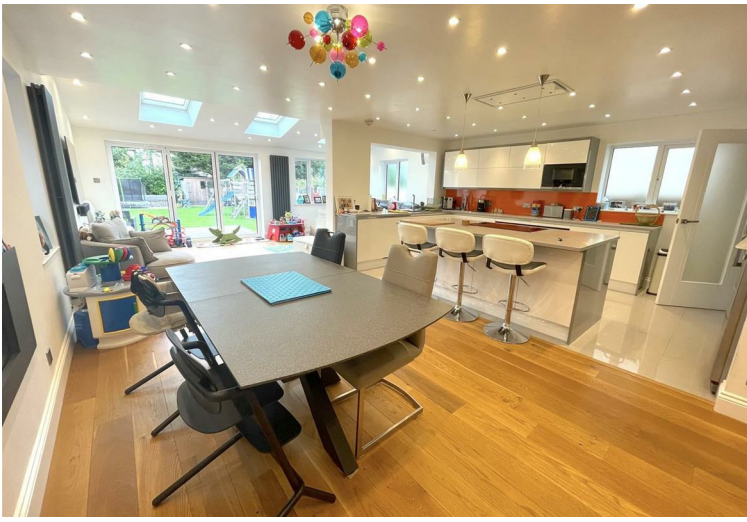
Selling & letting all types of property in Chalkwell,
Westcliff, Leigh, Southend and the surrounding areas.

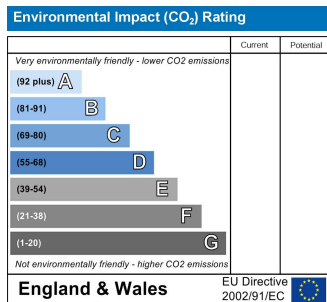
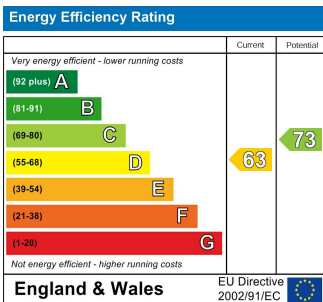
appointmoor

Description

SOLD OFF MARKET

Detached four bedroom family home in the sought after Leigh-on-Sea Marine Estate & West Leigh Catchment Area.





AGENTS NOTES: Every care has been taken with the preparation of these particulars, but complete accuracy cannot be guaranteed. If there is any point, which is of particular importance to you, please obtain professional confirmation. Alternatively, we will be pleased to check the information for you. All measurements quoted are approximate. Floor plans are not to scale. The Fixtures, Fittings & Appliances have not been tested and therefore no guarantee can be given that they are in working order. Photographs are reproduced for general information, and it cannot be inferred that any item shown is included in the sale.

VIEWINGS: BY APPOINTMOOR ESTATES ONLY

appointmoor

Appointmoor Sales 72 The Ridgeway,
Chalkwell, Westcliff-on-Sea, Essex, SSO 8NU
T. 01702 719966 W. appointmoor.co.uk



facebook.com/appointmoor



Instagram.com/appointmoor_estate_agents



twitter.com/appointmoor



linkedin.com/company/appointmoor