



6B Coppice Drive, Harrogate

£269,950 Guide Price

**VERITY
FREARSON**

**YOUR AWARD
WINNING AGENT**

#DARINGTOBEDIFFERENT



A beautifully presented two-bedroom top-floor apartment occupying the iconic turret of an impressive Victorian building, with private parking and spectacular panoramic views across Harrogate. Combining exceptional presentation, distinctive architecture and one of Harrogate's most unique living spaces, this is a rare opportunity to acquire an individual home in a truly special setting.

There are two well-proportioned bedrooms, with the principal bedroom enjoying a bright south-facing aspect and fitted wardrobes. The second bedroom is equally versatile and is currently arranged as a dressing room with a guest bed, offering flexibility as a guest bedroom, home office or additional double bedroom.

The beautifully appointed bathroom is finished with striking Black Galaxy granite wall and floor tiles, a contemporary free-standing bath, modern sanitaryware, a heated towel rail and a Velux roof window, creating a stylish and relaxing space.

Outside, the property benefits from a private parking space, together with a banked area immediately behind it which has potential to be developed into a private garden. A sweeping communal driveway and impressive Victorian architecture create an elegant sense of arrival and perfectly complement this unique home.

Council Tax band: C

Tenure: Leasehold

EPC Energy Efficiency Rating: C

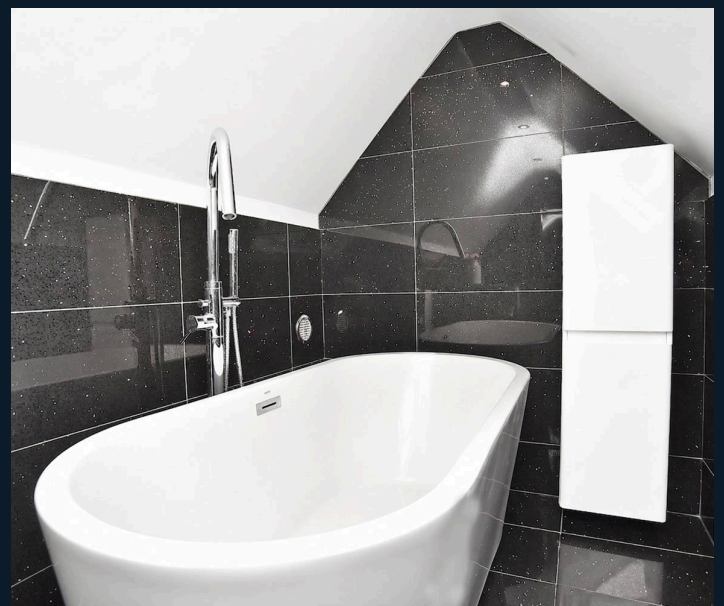


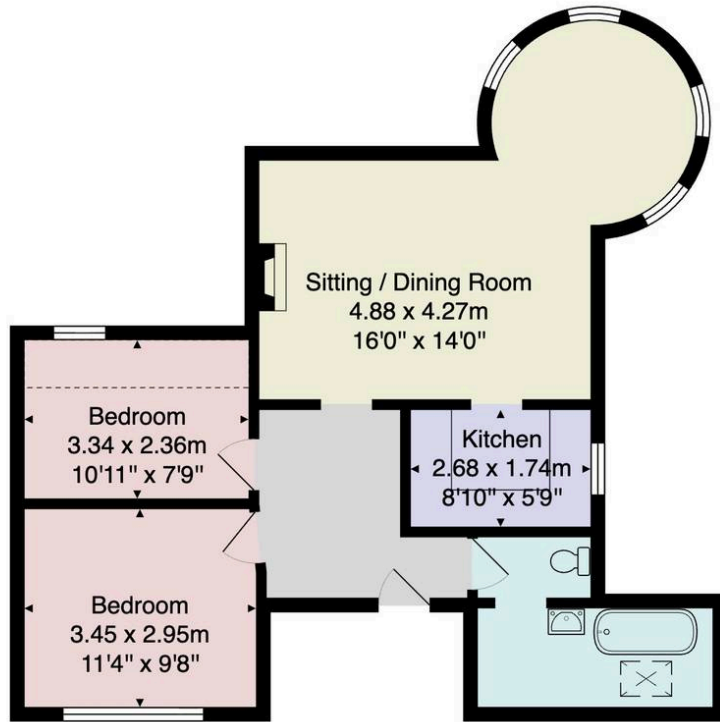
This immaculately maintained apartment offers windows to every aspect, providing panoramic views, and combines period character with contemporary style and occupies the top floor of one of Harrogate's most distinctive Victorian buildings. Set behind a sweeping private driveway within beautifully maintained grounds, the property enjoys an elevated, peaceful position just a short walk from Harrogate town centre, its cafes, restaurants, shops and railway station.

The open-plan living and dining area is beautifully presented, combining period character with contemporary style. Vaulted ceilings, exposed structural timbers and engineered oak flooring create a warm and inviting space, perfect for both everyday living and entertaining.

At the heart of the apartment is the magnificent circular turret, transformed into a stunning dining and seating area surrounded by windows that frame panoramic views across Harrogate and the surrounding countryside. Whether entertaining guests, enjoying a morning coffee or simply taking in the ever-changing views, this remarkable space is unlike anything found in a conventional apartment.

The stylish fitted kitchen is well appointed with sleek cabinetry, granite worktops, integrated appliances and striking designer tiled splashbacks, offering both style and practicality while complementing the contemporary feel of the home.





Total Area: 63.0 m² ... 679 ft²

All measurements are approximate and for display purposes only.

No liability is accepted by either the agency or Box Property Solutions Ltd as to the exact measurements of the rooms.

Box Property Solutions Ltd retains the copyright on this plan and allows agents to use it with agreed permission.

