



## Sussex Gardens, W2

£577 Per week

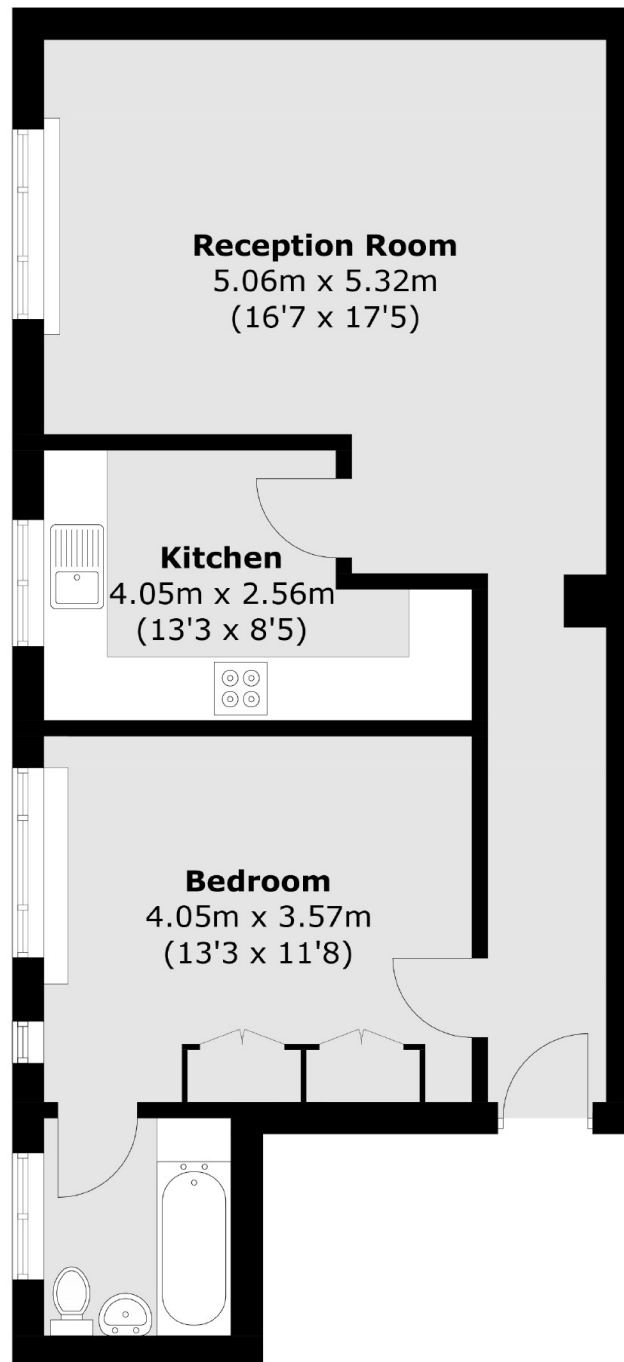
A spacious one bedroom apartment close to local transport and Hyde Park. The property has a large reception, a modern bathroom and a separate kitchen. The property would ideally suit a busy professional looking for a great location.

The nearest stations are Lancaster Gate and Paddington with access to the Heathrow Express and Hyde Park is a short walk away.

### Features

- One Bedroom
- Period Conversion
- Spacious
- Hyde Park
- Modern
- Large Reception

# Sussex Gardens, London, W2



Total area (approx.): 57.4 sq. m (618.3 sq. ft)

## Dexters

Hyde Park and Bayswater  
4-5 Spring Street  
London  
W2 3RA  
Lettings  
020 7298 1560

Energy Rating: . We aim to make our particulars both accurate and reliable. However they are not guaranteed; nor do they form part of an offer or contract. If you require clarification on any points then please contact us, especially if you're traveling some distance to view. Please note that appliances and heating systems have not been tested and therefore no warranties can be given as to their good working order.

 **RICS** | Regulated  
Estate Agent  
and Letting Agent

[dexters.co.uk](http://dexters.co.uk)