



**18 Ludlow Road, Coventry - CV5 6JA**

**In Excess of £180,000**

**Williams**  
BINCH  
SELLERS

# 18 Ludlow Road

Coventry, Coventry

A traditional mid terraced home, ideally positioned in the highly sought after area of Earlsdon. This delightful property presents an excellent opportunity for first time buyers or investors, with fantastic potential to create a welcoming and comfortable home. The house is offered for sale with vacant possession and no onward chain, ensuring a smooth and straightforward transaction. The well proportioned accommodation includes a spacious lounge leading through to a separate dining room, an attractively fitted kitchen, and a rear lobby with access to a ground floor bathroom. Upstairs, there are two double bedrooms. Outside, the property enjoys both front and rear gardens. Conveniently located, the home is within easy reach of local amenities, highly regarded schools, and excellent transport links. Combining traditional charm with great potential, this property is a superb choice for those looking to settle in this desirable location.

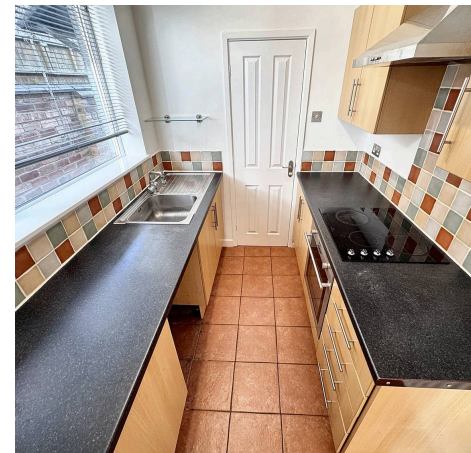
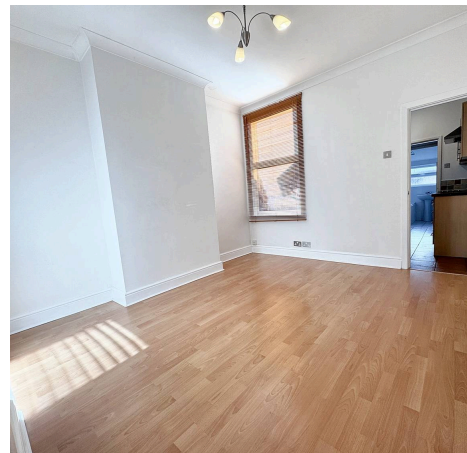
Council Tax band: A

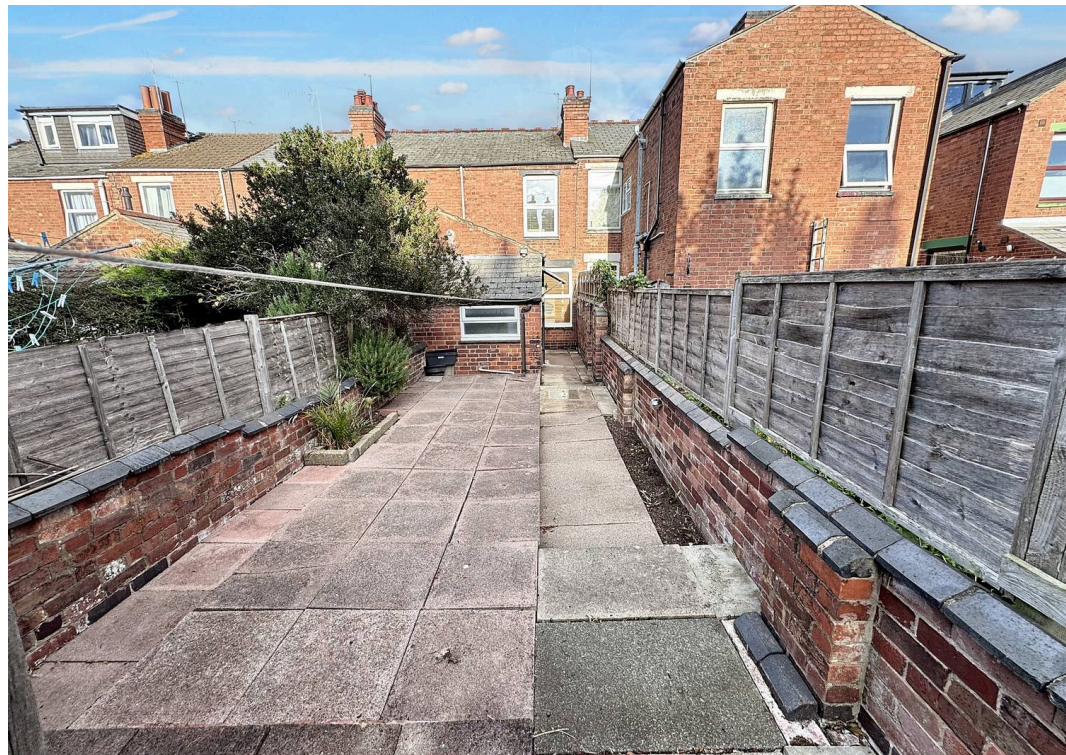
Tenure: Freehold

EPC Energy Efficiency Rating: D

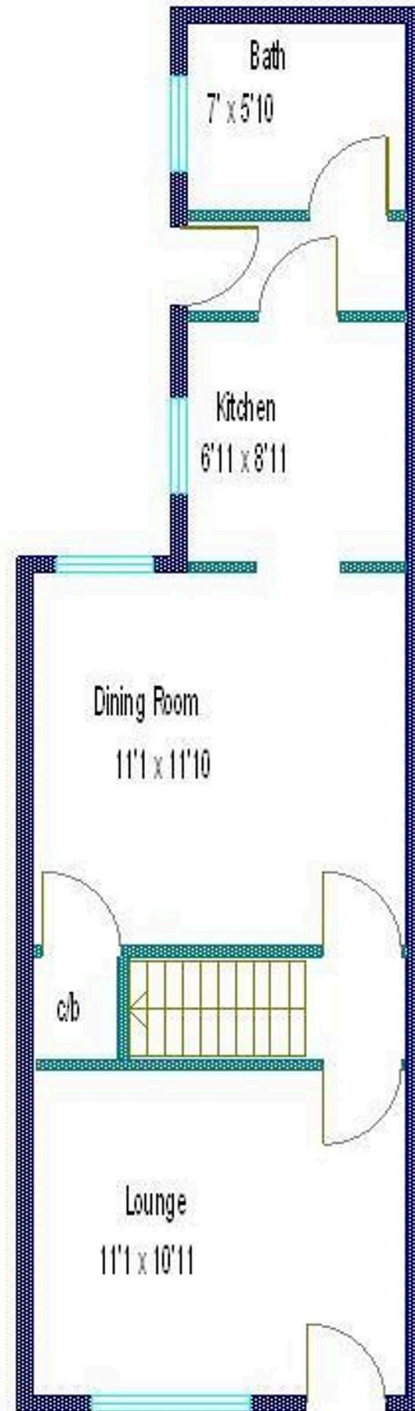
EPC Environmental Impact Rating: D

- Traditional Terraced Home
- Great Location In Earlsdon
- Lounge
- Dining Room
- Kitchen
- Bathroom
- Gardens To Front & Rear
- Gas Central Heating - Double Glazing
- No Chain





Ground Floor



First Floor

