



COUNTRY
HOLMES

The Heath, Glossop, Derbyshire, SK13 7QF

£700,000

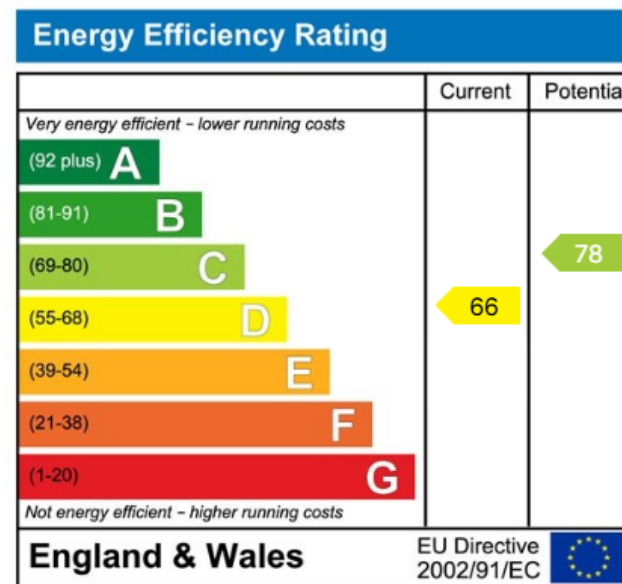
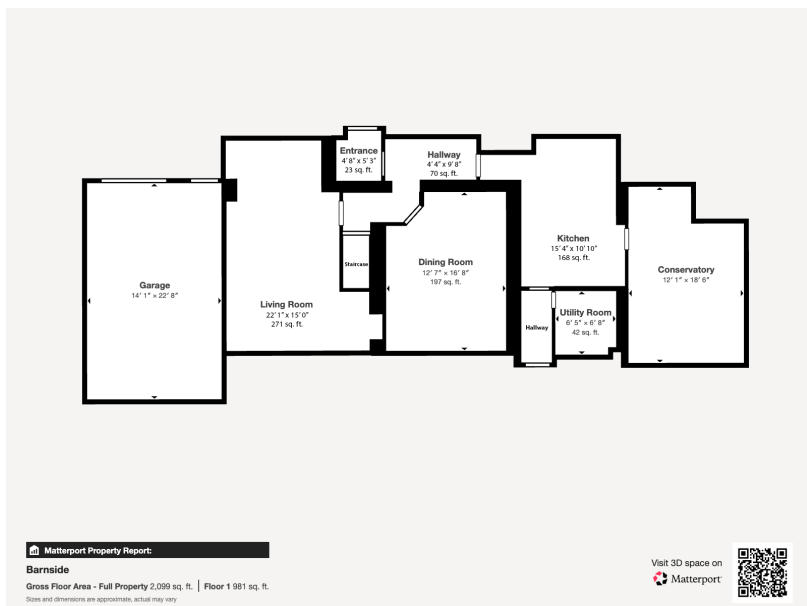
🛏 4 🚿 2 🚗 2



- Period property full of charm and character
- Exclusive location at the end of a quiet leafy lane
- Four double bedrooms
- Spacious lounge with stone fireplace, multi-fuel stove, and exposed beams
- Elegant dining room ideal for entertaining family and friends
- Solid oak kitchen diner with Rangemaster cooker and Belfast sink
- Large master bedroom with en-suite bathroom
- Four piece family bathroom suite
- Spacious garage (conversion potential, subject to consent)
- Gated driveway with ample parking



Country Holmes proudly present this characterful property, beautifully positioned at the end of a quiet leafy lane within an exclusive development of just three homes. Blending period charm with modern living, the property features spacious, character-filled interiors including a welcoming lounge with stone fireplace, elegant dining room, oak kitchen with conservatory, and practical utility space. Upstairs offers a bright master suite with en-suite, two further generous bedrooms and a four piece family bathroom. Outside, a gated driveway, large garage, and a beautifully landscaped two-tier garden with patio and lawn complete this exceptional countryside home—early viewing is highly recommended.



01457 761310 | glossop@countryholmes.co.uk | www.countryholmes.co.uk
 18 High Street West, Glossop, Derbyshire, SK13 8BH