



Earls Court Road
Kensington, W8

CHESTERTONS





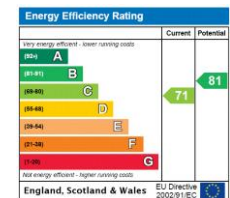
An impeccably proportioned two double-bedroom, two-bathroom residence occupying the raised ground floor of a distinguished Victorian period conversion. The property showcases remarkable 3.8-meter ceiling heights in the principal rooms, enhancing the sense of grandeur and spatial elegance, further elevated by an abundance of natural light.

The west-facing reception room is bathed in afternoon and evening sunlight, with secondary glazing ensuring a serene and tranquil ambiance. Both double bedrooms, discreetly positioned to the rear, enjoy an east-facing orientation, capturing the soft morning light.

Presented in excellent condition, this refined apartment seamlessly combines timeless period charm with sophisticated modern conveniences. Conveniently located near the junction of Lexham Gardens and Earl's Court Road, the residence provides effortless access to the prestigious amenities of Kensington High Street, renowned for its luxury boutiques, gourmet dining establishments, and cultural attractions. Exceptional transport links are available via the Circle and District tube lines, while the verdant expanses of Holland Park and Kensington Gardens offer an idyllic retreat from the bustle of city life.

- Two bedrooms
- West facing
- High ceilings
- Two bathrooms

Asking Price £1,000,000



Tenure: Leasehold 988 years remaining
Service Charge: £10,920 per annum
Ground Rent: £0
Local Authority: Kensington and Chelsea
Council Tax Band: E

Chestertons Kensington Sales

116 Kensington High Street
 London
 W8 7RW

kensington@chestertons.co.uk

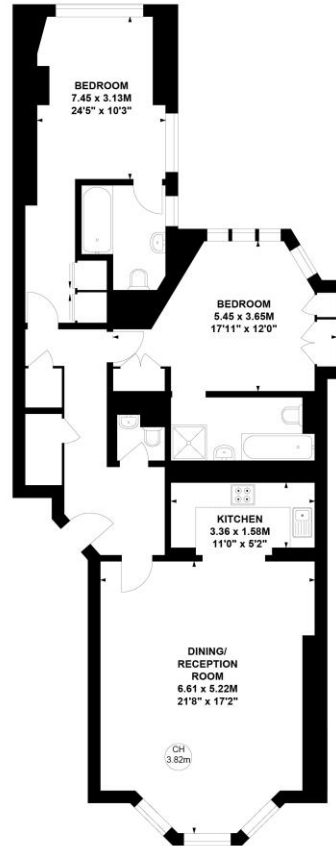
020 7937 7244

chestertons.co.uk

Earls Court Road, W8

Approximate gross internal area
101.33 sq m / 1091 sq ft

Key :
CH - Ceiling Height



Ground Floor

Not to scale, for guidance only and must not be relied upon as a statement of fact.
All measurements and areas are approximate only

Chesterton UK Services Limited trading as Chestertons for themselves and for the vendor of this property whose agents they are, give notice that (i) these particulars do not constitute any part of an offer or contract, (ii) all statements contained within these particulars are made without responsibility on the part of Chestertons or the vendor, (iii) whilst made in good faith, none of the statements contained within these particulars are to be relied upon as a statement or representation of fact, (iv) any intending purchasers must satisfy themselves by inspection or otherwise as to the correctness of each of the statements contained within these particulars, (v) the vendor does not make or give either Chestertons or any person in their employment any authority to make or give representation or warranty whatsoever in relation to this property. Wide angle lenses may be used. ©Copyright Chestertons | Chesterton UK Services Limited | Registered Office 40 Connaught Street, Hyde Park, London W2 2AB Registered Company Number 05334580.



This paper is
100% recyclable