



BOWDEN
BRADLEY

6 Norbury Gardens, Chadwell Heath

Chadwell Heath

Guide Price £500,000



B
BOWDEN
BRADLEY

6 Norbury Gardens

Chadwell Heath

Council Tax band: D

Tenure: Freehold

EPC Energy Efficiency Rating: E

EPC Environmental Impact Rating: E

- Guide Price £500,000 - £550,000
- 3 Bedroom Mid Terrace Home
- Immaculate Condition Throughout
- Off Street Parking
- Huge Potential For Further Expansion (STPP)
- Sought After Area Of Chadwell Heath
- Chadwell Heath Elizabeth Line Station Nearby
- Plenty Of Shops & Amenities Walking Distance
- Great Schools In The Area





BB
BOWDEN
BRADLEY

Living Room

15' 2" x 12' 0" (4.62m x 3.67m)

Lounge

14' 6" x 10' 7" (4.42m x 3.23m)

Kitchen

9' 5" x 6' 6" (2.87m x 1.98m)

Bedroom

15' 6" x 11' 11" (4.73m x 3.63m)

Bedroom

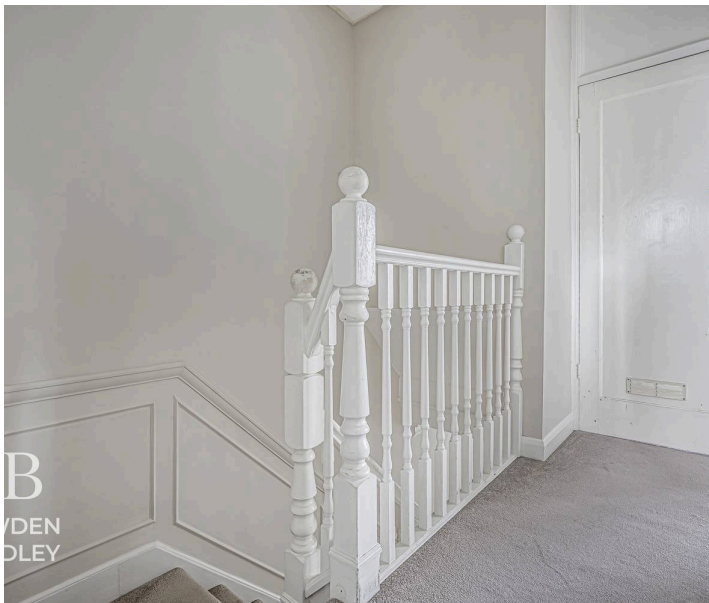
14' 7" x 9' 11" (4.45m x 3.01m)

Bedroom

8' 5" x 6' 4" (2.57m x 1.93m)

Bathroom

6' 8" x 6' 2" (2.03m x 1.88m)



B
W/DEN
DLEY



B
W/DEN
DLEY



BB
BOWDEN
BRADLEY



BB
BOWDEN
BRADLEY



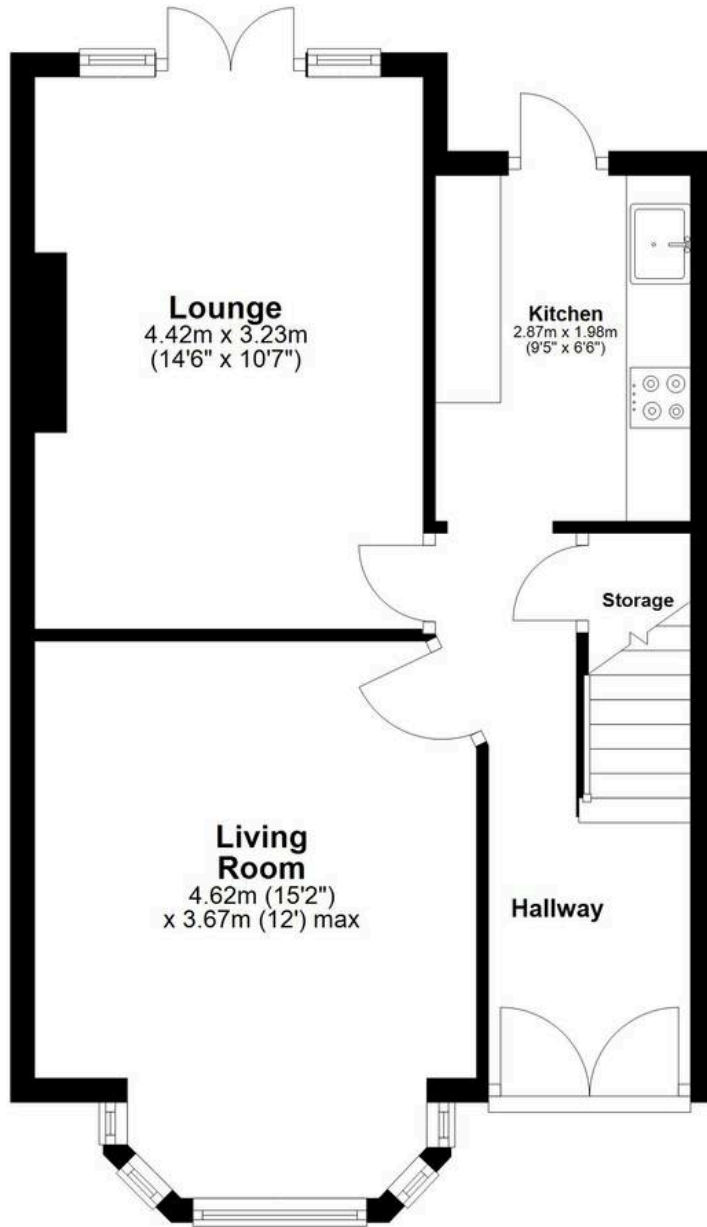
BB
BOWDEN
BRADLEY



BB
BOWDEN
BRADLEY

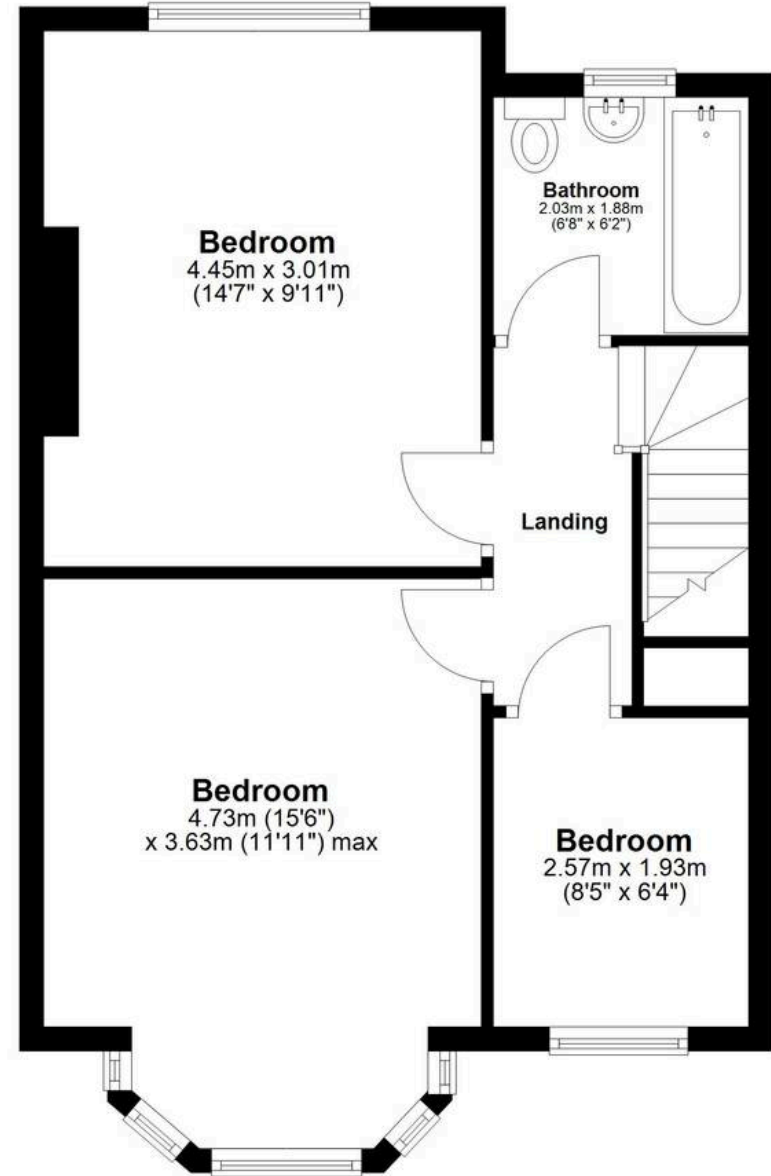
Ground Floor

Approx. 44.8 sq. metres (482.0 sq. feet)



First Floor

Approx. 45.8 sq. metres (492.6 sq. feet)



Total area: approx. 90.5 sq. metres (974.6 sq. feet)



Bowden Bradley

Bansal House, Bracken Industrial Estate, 185 Forest Road - IG6 3HX

02080593593 · info@bowdenbradley.co.uk · bowdenbradley.co.uk/