



Symonds
& Sampson

4 Woodville Court

Poundbury, Dorchester

4 Woodville Court

Poundbury
Dorchester
Dorset DT1 3TJ

Architecturally striking penthouse apartment with accommodation arranged over 3 floors, situated close to local amenities.



- Sun room enjoying panoramic views across Poundbury and nearby countryside
 - One of four apartments in the block
 - Lift to second floor
 - Two allocated parking spaces
 - No forward chain
 - Close to Queen Mother Square
- Lease of 250 years from April 2008 with a remaining 223 years
 - Annual Service Charge £5,910.60

Guide Price **£320,000**

Leasehold

Poundbury Sales
01305 251154
poundbury@symondsandsampson.co.uk



INTRODUCTION

A unique and versatile penthouse with accommodation over the second, third and fourth floors, set within an attractive building, close to a range of local amenities. The well-proportioned property enjoys views over Poundbury and the surrounding countryside.

ACCOMMODATION

The entrance to the property is gained via a communal door opening onto communal hall with stairs and lift to the second floor. The private front door entrance opens onto the spacious and light hallway with attractive herringbone style wood flooring and storage cupboard.

The accommodation comprises a spacious, dual aspect reception room with feature circular windows. The kitchen is fitted with a comprehensive range of wall and base units with granite work surface over. Integrated appliances include washer/dryer fridge/freezer, dishwasher, double oven and gas hob with extractor over. There is also room for a dining room table within the kitchen. Located on this floor are a good size study/bedroom with built in storage and fully tiled bathroom.

Stairs lead to a further floor with landing space offering further storage and access to the principal bedroom. The dual aspect bedroom is generous in size with extensive

built-in storage cupboards. Access to a fully tiled en-suite shower room with a double cubicle.

Accessed via a spiral staircase a charming sun room with panoramic views of Poundbury and the surrounding countryside.

OUTSIDE

The property has two allocated parking spaces situated in the courtyard.

DIRECTIONS

What3words///belt.tangent.positive

SITUATION

The penthouse is situated in a convenient location close to Queen Mother Square, which provides a good range of amenities including Waitrose, 20-bedroom Duchess of Cornwall Inn, Luxury Monart Spa, butchers, gallery, coffee houses and restaurants. Across the Poundbury development there are a variety of boutiques, a veterinary practice, dentist surgery and doctor's surgery along with several specialist outlets.

SERVICES

Mains electric, gas, water and drainage. Gas fired central heating.

Broadband - Superfast 80mbps speed available
Mobile - There is mobile coverage in the area, please refer to Ofcom's website for more details.
(<https://www.ofcom.org.uk>)

MATERIAL INFORMATION

Council Tax Band C
EPC C

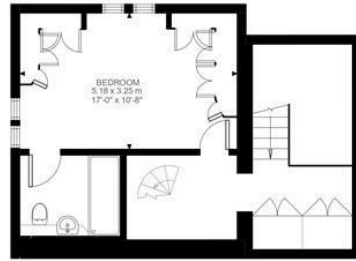
Lease Details

125 years from 22/04/2008 with 223 years remaining
Service Charge - £5,910.60 per annum
Ground rent - We are informed by our client that the ground rent is £125.00 per annum
Management Company - Templehill Property
Contact: 01305 751772

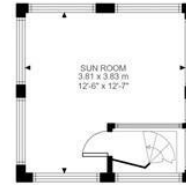
Manco 3- £240.00 per annum



Energy Efficiency Rating		Current	Potential
Why energy efficient - lower running costs			
101-155	A		
81-100	B		
61-80	C	78	78
41-60	D		
21-40	E		
1-20	F		
1-10	G		
EU Energy Efficient - Alpha energy code			
England & Wales		EU Directive 2002/91/EC	78



Third Floor
448 ft²



Fourth Floor
171 ft²



Second Floor
887 ft²



Woodville Court, DT1
Approximate Gross Internal Area
139.95 SQ.M / 1506 SQ.FT

Illustration for identification purposes only. Not to scale.
Floor Plan Drawn According To RICS Guidelines.

Poundbury/pgs/3.6.26



01305 251154

poundbury@symondsandsampson.co.uk
Symonds & Sampson LLP
Arch Point House, 7 Queen Mother Square,
Poundbury, Dorset DT1 3BY



Important Notice: Symonds & Sampson LLP and their clients give notice that they have no authority to make or give any representations or warranties regarding the property. These particulars do not form part of any offer or contract and must not be relied upon as statements of fact. Some descriptions and images may have been AI-assisted; while reviewed for accuracy, interested parties should verify key details through inspection or by contacting our agents. All measurements and distances are approximate. Text, photographs, and plans are for guidance only and may not be comprehensive. It should not be assumed that the property has all necessary planning or regulatory consents, and no services, equipment, or facilities have been tested. No investigations have been made into pollution or contamination; purchasers must make their own enquiries. The property is sold subject to all existing wayleaves, easements, and rights of way (public or private), whether mentioned or not. Vendors are not required to define such rights.

SALES | LETTINGS | AUCTIONS | FARMS & LAND | COMMERCIAL | NEW HOMES | PLANNING & DEVELOPMENT