



EARL'S COURT SQUARE, SW5

£1,295,000

Two double bedrooms

Two bathrooms

Garden square

Wood flooring

Private garden

Circa 1250SqFt

@marshandparsons
marshandparsons.co.uk

MARSH &
PARSONS

ABOUT THE PROPERTY

This beautiful two-bedroom apartment will make the perfect home for anyone looking to be in the heart of Kensington and Chelsea with access to private garden and gated garden square. The property has been finished to a good standards and comprises two large double bedrooms, two bathrooms and a beautiful open-plan kitchen-reception room. Further benefits include wooden flooring and a stylish, modern finish.

Transport links are excellent having Earls Court underground station (Piccadilly, District lines) as well as West Brompton station (under and overground lines), both within a short walk.

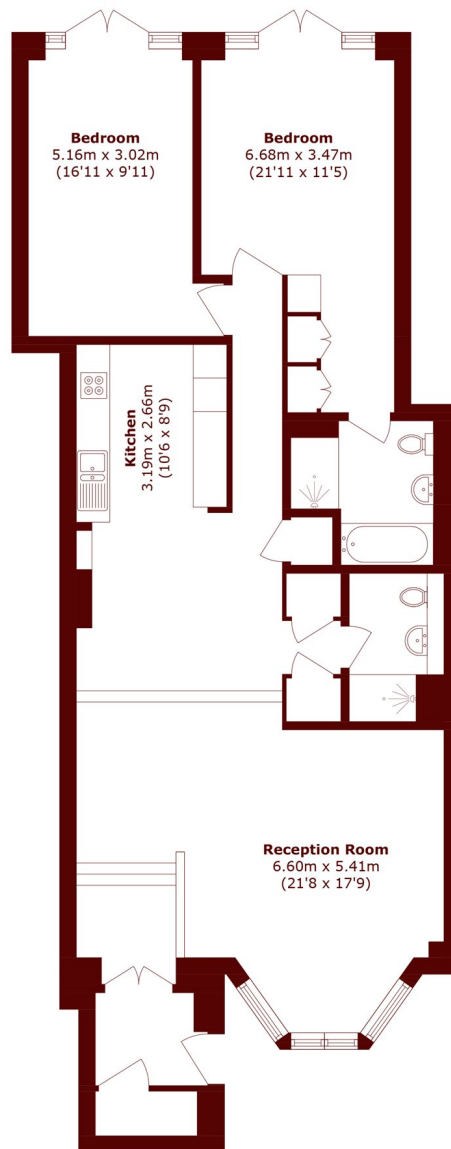








STEP INSIDE EARL'S COURT SQUARE



Total area (approx.): 115.9 sq. m (1247.5 sq. ft)

Earls Court
020 7244 2210

Energy Rating: E We aim to make our particulars both accurate and reliable. However, they are not guaranteed; nor do they form part of an offer or contract. If you require clarification on any points then please contact us, especially if you're traveling some distance to view. Please note that appliances and heating systems have not been tested and therefore no warranties can be given as to their good working order

**MARSH &
PARSONS**