



2 The Willows, Great Sankey

Freehold

Four Bed Detached Family Home • Private Gated Community • Driveway Parking • Double Garage • Freehold Title • Spacious Interiors • Bright and Airy Living • Charming Field Views • Close To Amenities • Close To Schools



Mark Antony
SALES & LETTING AGENTS



INTERIOR:

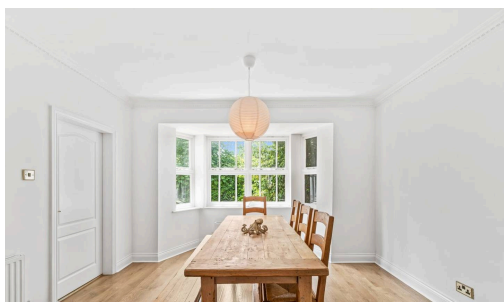
Upon entering the property, you are welcomed by an elegant, bright, and airy hallway that immediately creates a sense of space and sophistication while providing seamless access to all areas of the home. To the right, the spacious lounge offers a comfortable and inviting setting, perfect for relaxing or entertaining. Flowing seamlessly to the rear, the impressive dining area sits alongside a stunning contemporary kitchen, expertly crafted for luxurious modern living. Showcasing high-quality integrated appliances, expansive work surfaces, and an elegant breakfast bar, this exceptional space combines sophistication with everyday functionality while enjoying picturesque views over the beautifully maintained rear garden. The ground floor is further complemented by a separate utility room, versatile reception room, a stylish WC, and direct internal access to the double garage. As you ascend the staircase to the first floor, you will find four beautifully presented and generously proportioned bedrooms, perfectly suited for modern family living.



The luxurious principal bedroom benefits from a stylish en-Suite shower room, creating a private and relaxing retreat. Each bedroom is filled with natural light, enhancing the bright and airy feel throughout the upper level. A beautifully appointed family bathroom serves the remaining bedrooms, finished to a high standard with both comfort and elegance in mind. Bedroom four is a particularly charming feature of the home, boasting patio doors that open onto a private balcony, where delightful views provide the perfect setting to relax and unwind while enjoying the peaceful surroundings.

GARDEN:

To the rear of the property you will find a private outdoor retreat – including a well-maintained lawn, patio seating area, and mature hedging, creating a tranquil setting ideal for relaxing, entertaining, and enjoying the beautifully landscaped garden environment year-round. There is also a private balcony offering charming field views.

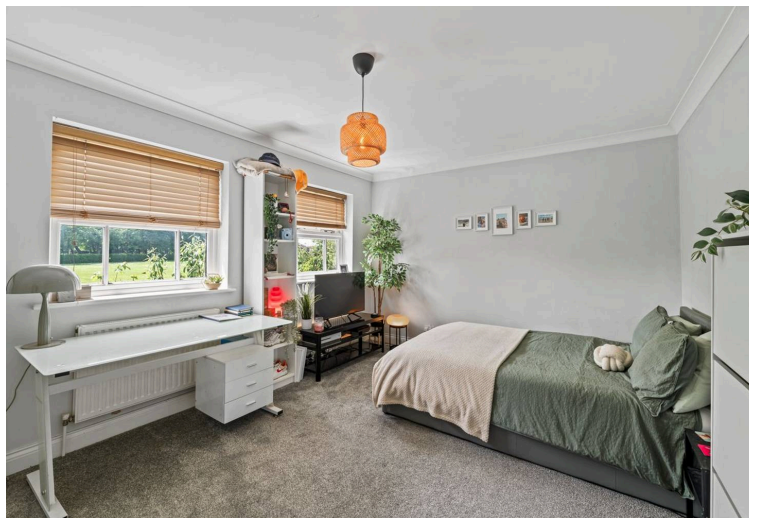


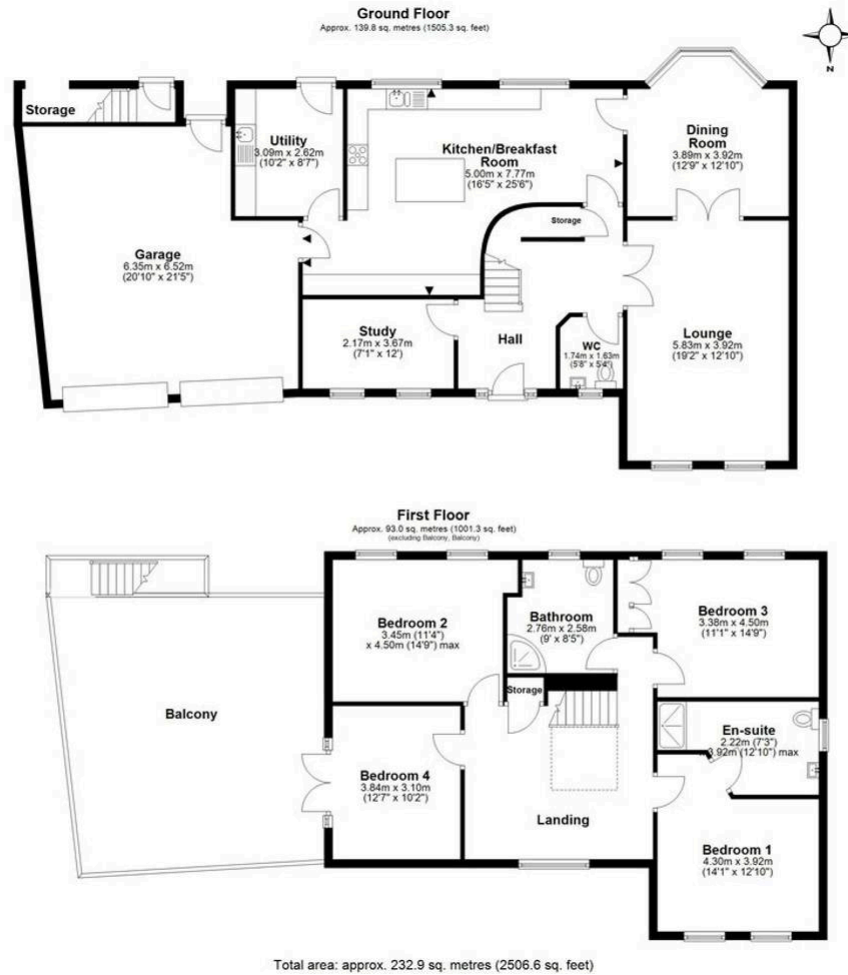
LOCATION:

An attractive suburb located west of Warrington Town Centre, Great Sankey is a popular area for families and professionals. With a dedicated train station servicing local towns and cities, the area is perfectly placed for commuting. Great Sankey boasts an abundance of high achieving primary and secondary schools. It is also home to a recently refurbished leisure centre and a great selection of local shops, pubs and restaurants. The popular Gemini Park is close by and home to various superstores, including Ikea. Sankey Valley park, is on the doorstep for residents, which has plenty of attractions for all ages.

GENERAL INFORMATION:

- › Council Tax band: F
- › Tenure: Freehold
- › EPC Energy Efficiency Rating: C





VIEWING ARRANGEMENTS

Viewing is strictly by appointment only.
 Please use Street or contact us to
 arrange a viewing.

CONTENTS, FIXTURES & FITTINGS

Not included in the asking price.
 Items may be available under
 separate negotiation.