

Need a Mortgage in principle to make offers? Call us now for quick assistance!
0121 775 0101



Do you need to sell? Start your journey now! Call us we can help.
01564 777 314



36 Packwood Close

Bentley Heath, B93 8AW



SCAN FOR MORE INFO

SIZE - 1643sq Ft
TENURE - Freehold
COUNCIL TAX - Solihull Metropolitan Borough Council - D
BROADBAND - Upload Max 1000Mbps Download Max 1800Mbps
MOBILE - EE - 82%, O2 - 74%, 3 - 76%, Vodafone - 78%
EPC - C - 74
PARKING - For 2 Vehicles
FLOODRISK - Very Low
SERVICES - Mains
COVENANTS - N/A

Nestled in a quiet cul-de-sac this well-presented semi-detached house offers an ideal family home. This delightful home combines modern living with comfort, making it an excellent choice for families seeking a peaceful yet accessible location in Solihull.

FEATURES

- Extended Semi-Detached Property
- Lounge with Log Burner
- Fabulous Kitchen/Dining/Family Room
- Two Double Bedrooms
- Third Single Bedroom/Nursery
- Family Bathroom
- Versatile Second Floor Room with En-Suite Shower Room
- Rear Garden
- Driveway Parking for 2 Vehicles
- Popular Location

Are you an investor interested in expanding your portfolio?

Call 01564 777 314 to provide your investment criteria for alerts.



SCAN TO VIEW OUR WEEKLY FILMS & SUBSCRIBE

Sneak Peeks

Every week, we unveil "Sneak Peeks," a feature showcasing exclusive properties before they hit Rightmove and other platforms.

The Landlord Club

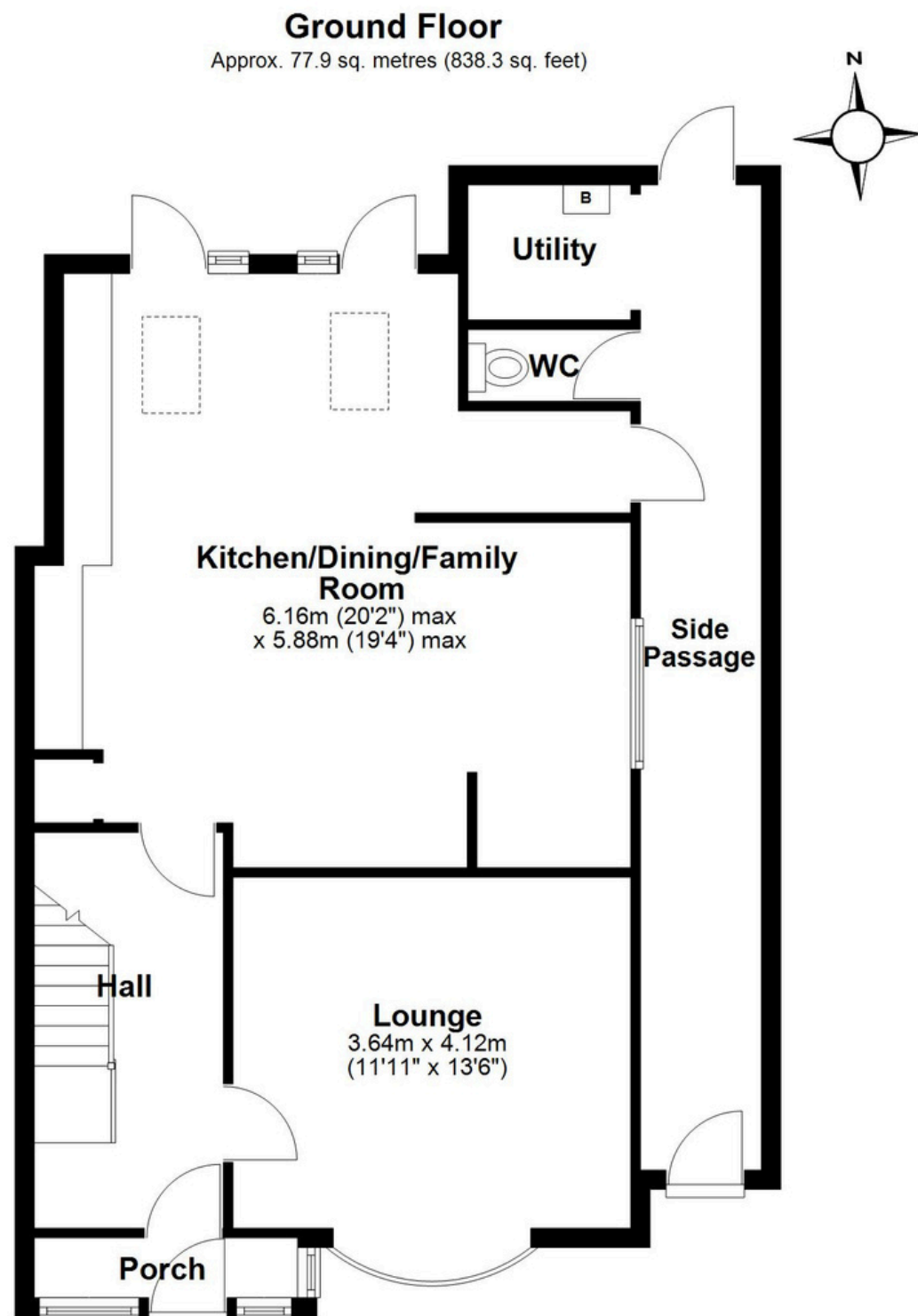
Join our Landlord Club for weekly updates on legislation, market trends, and our Letting Director's 'Investment Pick of the Week' for optimal ROI.

HTSPMD

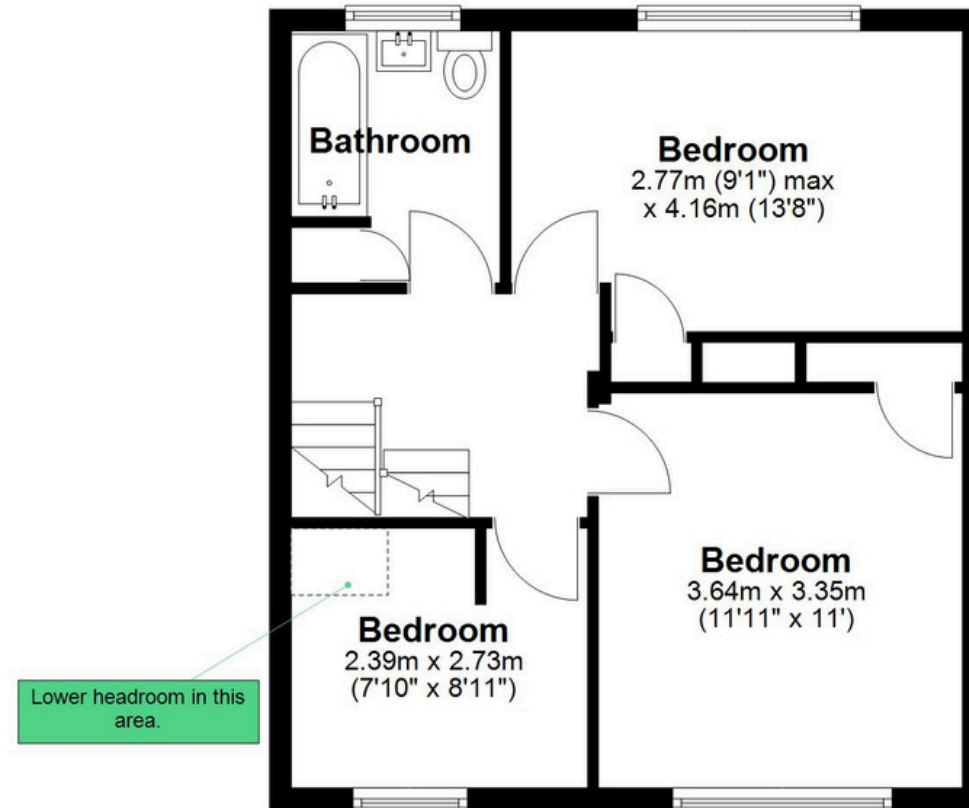
Tune into 'How's The Solihull Property Market Dom' weekly for a quick, insightful snapshot of the market.

The Mortgage Update

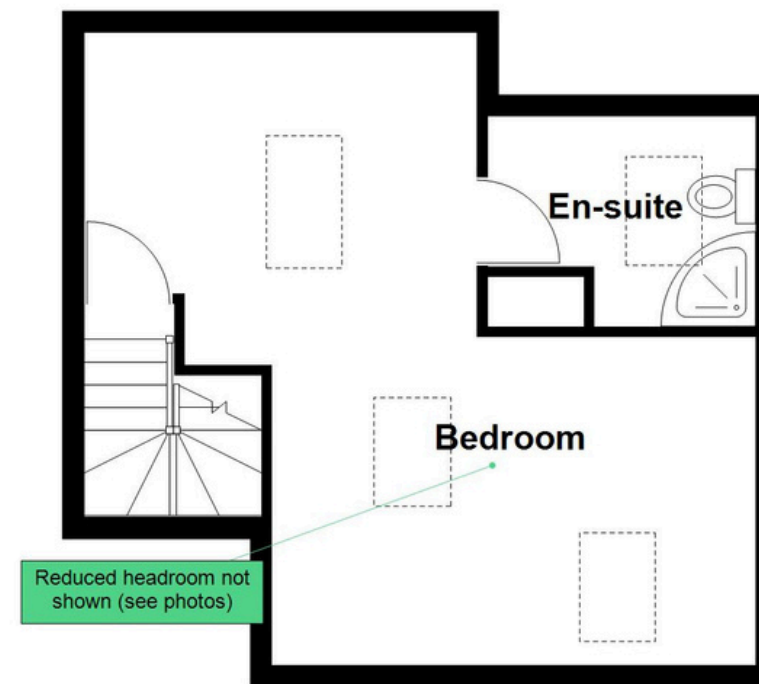
Get weekly insights and the best deals with our Mortgage Update, your shortcut to navigating the complex mortgage landscape confidently.



First Floor
Approx. 43.1 sq. metres (464.1 sq. feet)



Second Floor
Approx. 31.7 sq. metres (340.9 sq. feet)



Total area: approx. 152.7 sq. metres (1643.3 sq. feet)

This floor plan is for illustration purposes only, this is not intended to be a measured/scaled survey or comply with RICS guidelines. All measurements (including total floor area) openings, orientation and floor area are approximate. No details are guaranteed, they cannot be relied upon for any purpose and do not form part of any agreement. A party must rely upon its own inspection(s). No responsibility is taken for any error, omission, or mis-statement.
Plan produced using PlanUp.