



Great George Street Woodhouse Lane, Leeds, LS1

£1,250 PCM

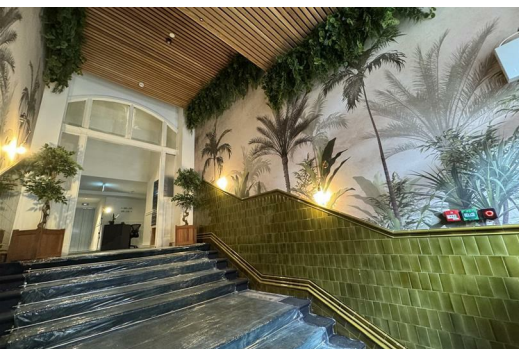
Welcome to Great George Street, Woodhouse Lane, Leeds - a charming property that is sure to capture your heart! This delightful flat boasts a cosy reception room, perfect for relaxing or entertaining guests with the integrated Sonos audio system. With one spacious bedroom, you'll have a peaceful retreat to unwind after a long day. The property also features a modern bathroom, adding convenience to your daily routine.

This property also includes a 24/7 resident-exclusive gym and communal rooftop terrace.

Situated in the vibrant city of Leeds, this flat offers the perfect blend of urban living and tranquility. Whether you're a first-time renter, a young professional, or looking for a cosy space to call your own, this property has something for everyone.

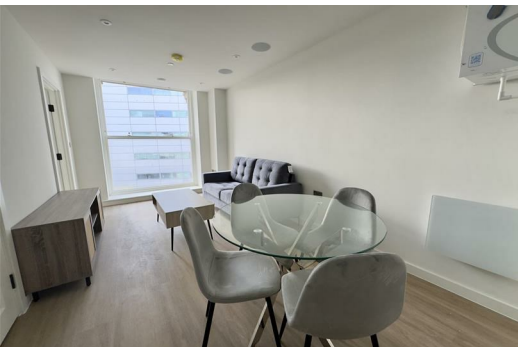
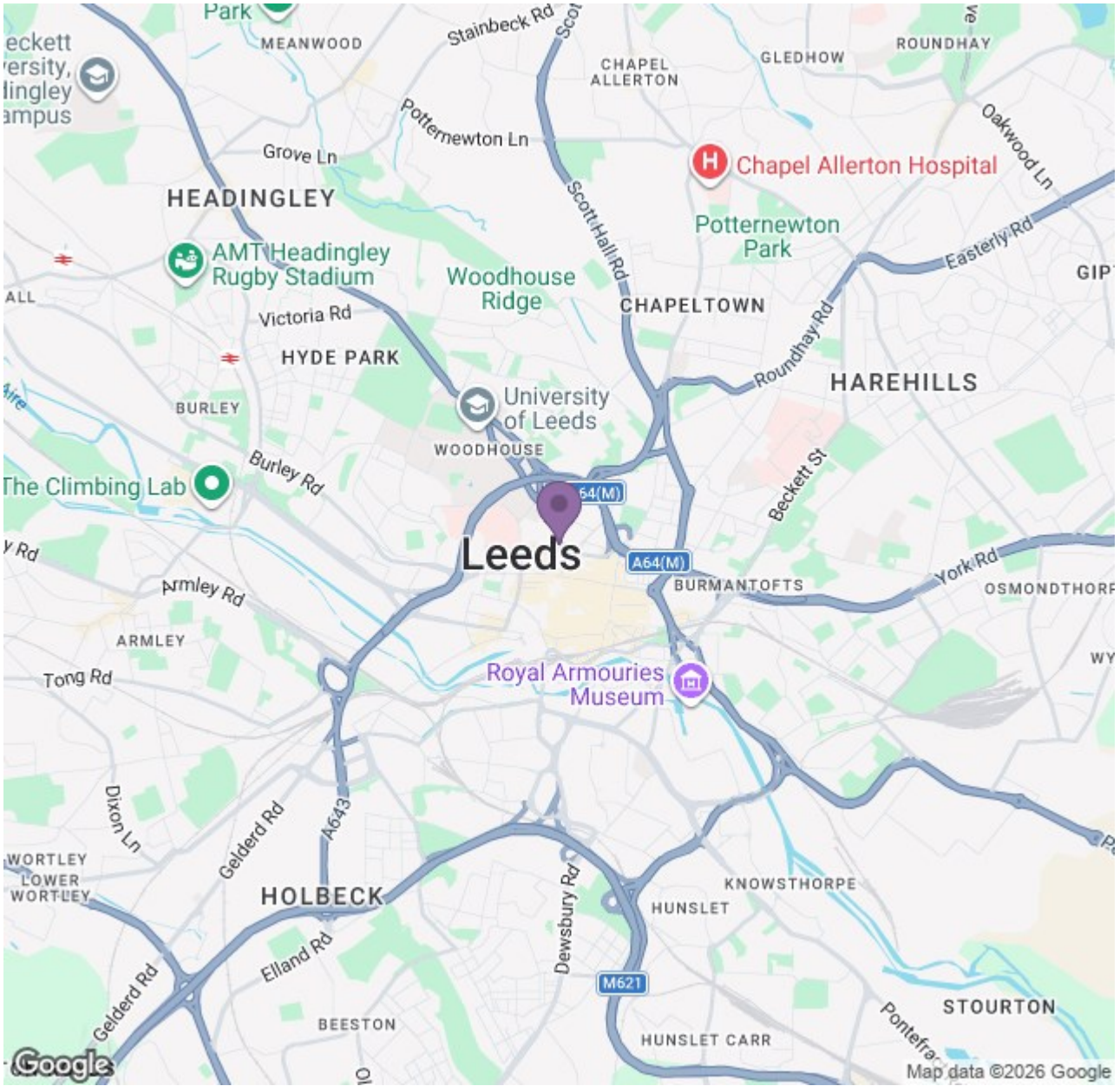
Located in a prime location, you'll have easy access to local amenities, shops, and transport links, making your daily life a breeze. Don't miss out on the opportunity to make this flat your home sweet home. Contact us today to arrange a viewing.

Available 20th July 2026
Deposit: £1,440
Council Tax Band: C
Fully Furnished



Ascend

Built on higher standards



Energy Efficiency Rating		Environmental Impact (CO ₂) Rating	
Current	Target	Current	Target
71	71	71	71

England & Wales

Ascend

Built on higher standards