

77 Millstream Mews, £399,500*

(Other charges apply)

RICHMOND
VILLAGES

Part of Bupa

GF

1



1



EPC - C



1 bedroom ground floor apartment

Richmond Villages are pleased to offer for resale this charming one bedroom apartment situated in a secluded and private mews area within the retirement village. The apartment benefits from easy access to the restaurant, bar, reception, art studio, library, wellness spa, outdoor seating areas, bowling green, café and shop, lake and nature reserve.

Specification

- Spacious and bright living room with French doors leading to private south-west facing patio. Remote controlled electric fire with Bath stone effect surround.
- Modern fitted kitchen with under cupboard lighting and built in appliances including Neff double oven and ceramic hob, fridge freezer and dishwasher.
- Large bedroom with fitted wardrobes and a modern ensuite shower room.
- En-suite shower room with walk-in shower and fully fitted suite.
- Entrance hall with cloakroom and storage cupboard with washer/dryer.
- TV and satellite points*
- Residents can enjoy beautifully maintained gardens, a nearby bowling green, surrounding wildflower meadows, nature reserve and private allotments.
- Allocated parking space for one car.



*Satellite subscription not included.

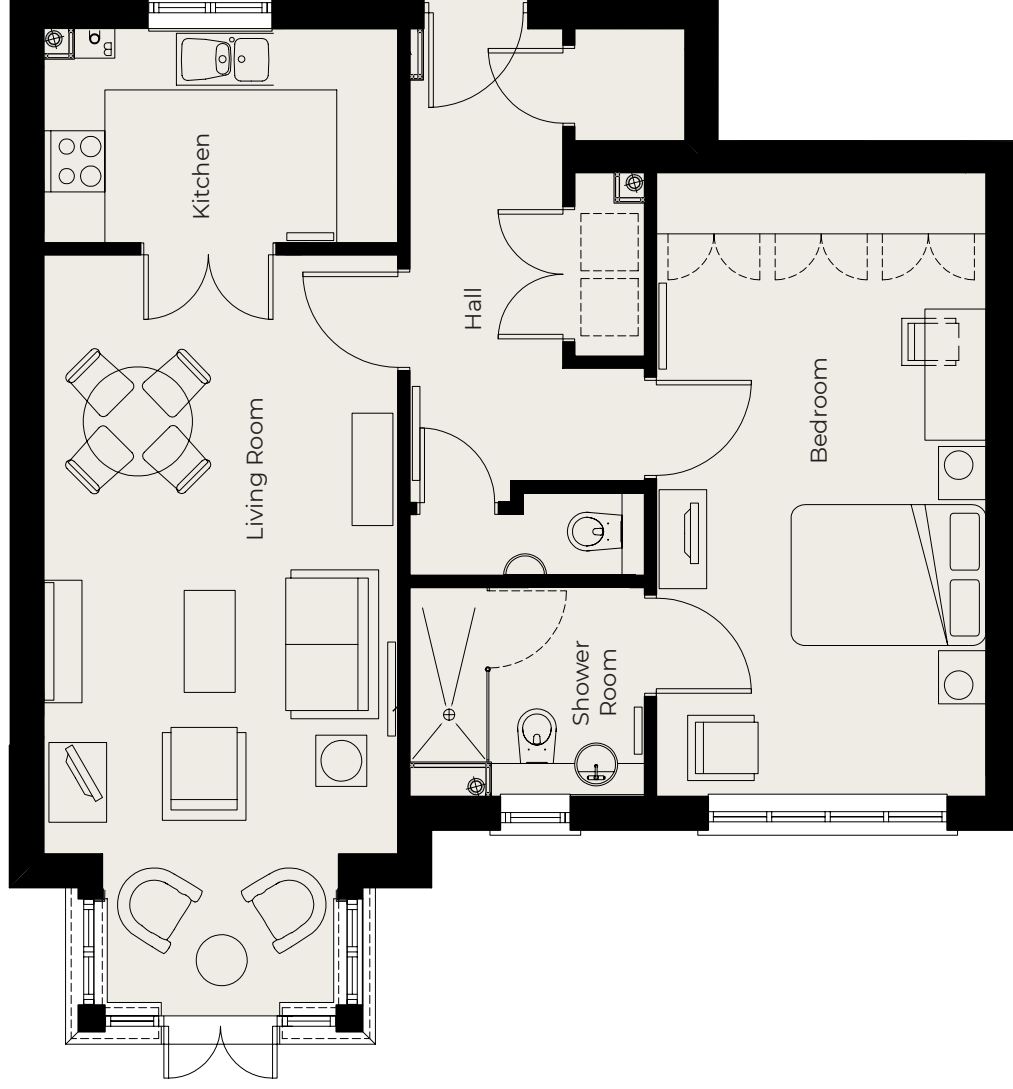
Important Notice: These particulars are intended to give a fair and substantially correct overall description. **Other fees and charges apply**, please contact the Village Advisers for further details. Properties are sold on a 125 year lease and this property has 116 years remaining.

01235 773970
letcomberegis@richmond-villages.com

Richmond Villages Letcombe Regis,
South Street, Letcombe Regis, Oxfordshire OX12 9RG

77 Millstream Mews

Ground Floor | 759ft²



- Kitchen**
3470mm x 2100mm
11'5" x 6'11"
- Living Room**
3470mm x 7348mm
11'5" x 24'1"
- Bedroom**
3230mm x 6112mm
10'7" x 20'1"
- Shower Room**
2300mm x 2050mm
7'7" x 6'9"

These particulars are intended to give a fair and substantially correct overall description. Measurements have been taken at 1500mm skimming height. All dimensions are approximate. Bedroom measurements include the wardrobe if applicable. Room measurements include bay windows if applicable. Furniture layout is to give an indicative impression. Although all efforts have been made to ensure its accuracy at time of print dimensions, fixtures, fittings, finishes and specifications are subject to change without notice. The properties are sold unfurnished.

