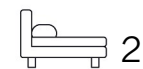


Living  
made  
better

Sienna Alto  
Lewisham, SE13 7FZ



Offers In Excess Of £415,000

# Sienna Alto, Lewisham, SE13 7FZ

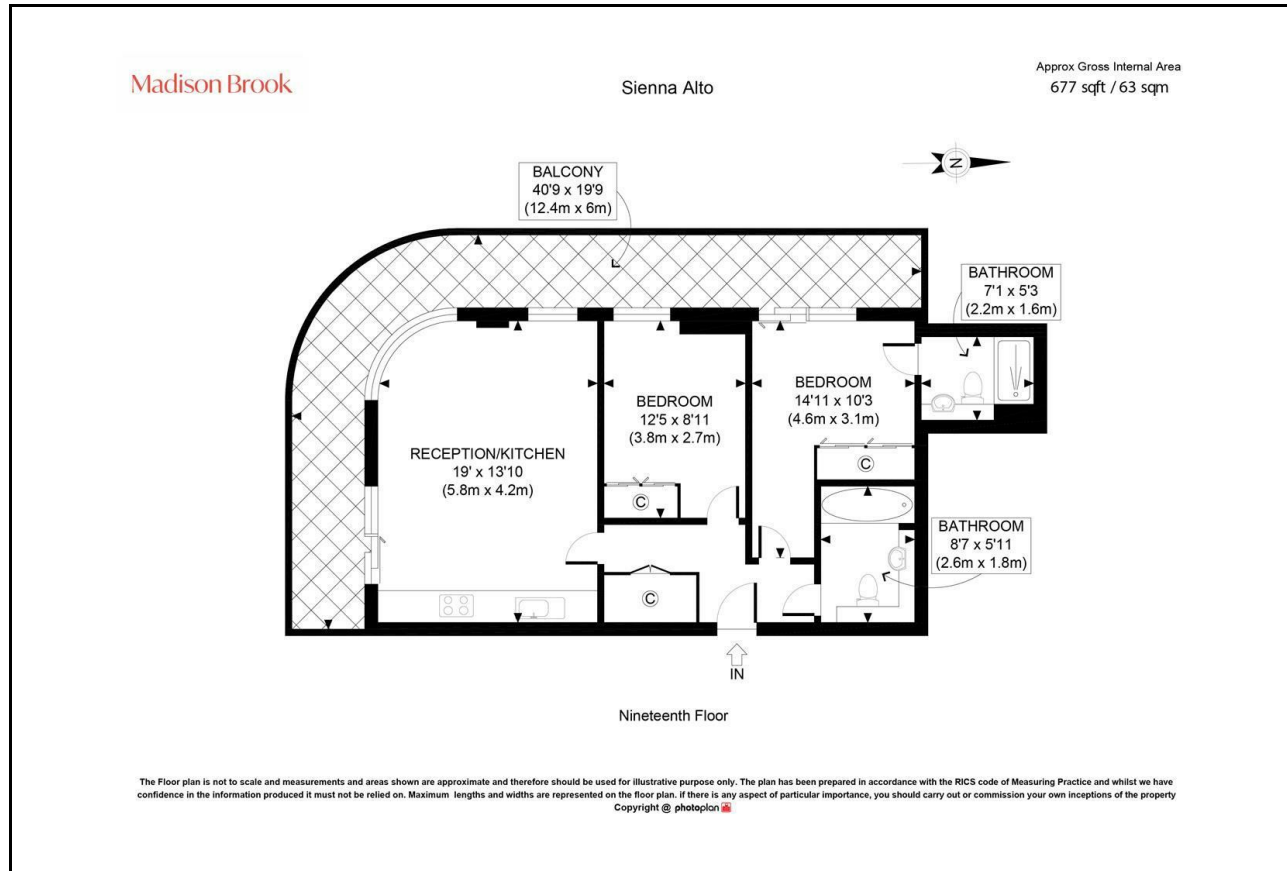
Madison Brook

## Property Summary

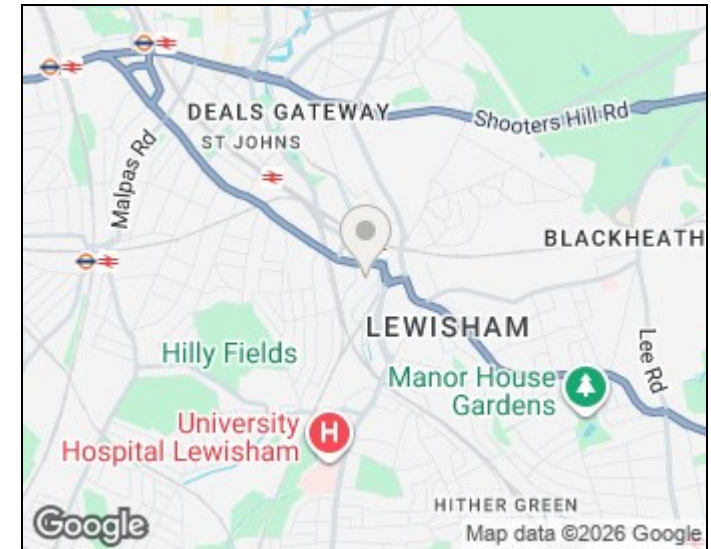
A spacious two-bedroom ground floor Victorian conversion extending to approximately 771 sq ft, benefitting from a large private rear garden and off-street parking on a shared driveway. Ideally located close to transport links, parks, schools and the high street, this property offers generous room sizes and excellent convenience.

Service Charge: £2,032 pa | Ground Rent: £470 pa | Lease Remaining: 114 years

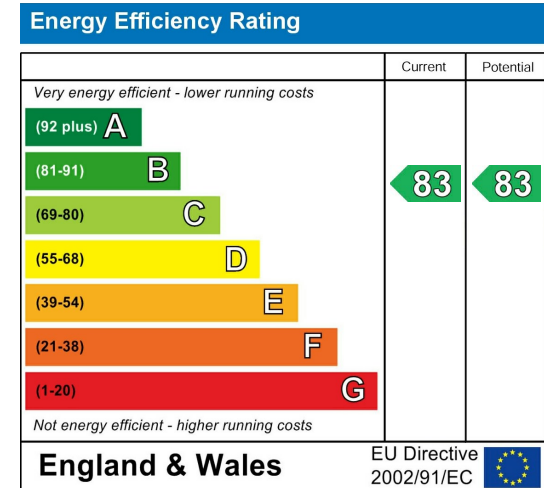
## Floorplan



## Area Map



## Energy Efficiency Graph



These particulars, whilst believed to be accurate are set out as a general outline only for guidance and do not constitute any part of an offer or contract. Intending purchasers should not rely on them as statements of representation of fact, but must satisfy themselves by inspection or otherwise as to their accuracy. No person in this firm's employment has the authority to make or give any representation or warranty in respect of the property.

43 Loampit Vale, Lewisham, London, SE13 7FT

Tel: 020 3946 6200 Email:

lewisham@madisonbrook.com

<https://madisonbrook.com/>