

for sale

£250,000



Westfaling Street Hereford HR4 0JD

This wonderful End-terrace home is conveniently located just outside Hereford City Centre. Its central location provides easy access to Hereford's amenities, making it a wonderful opportunity for first-time buyers, investor or anyone seeking a blend of tradition and contemporary living.

Westfaling Street Hereford HR4 0JD

Approach

On street parking with steps leading to the front door.

Lounge

With bay window to front aspect, log burner with featured surround, central heating radiator, ceiling light point and door leading to kitchen/dining room. Door and stairs also giving access to Cellar .

Kitchen/ Dining Room

Fitted kitchen with a range of units, range cooker, plumbing for washing machine and dishwasher with space for fridge freezer, central heated combi boiler, central heating radiator, two ceiling light points, with a window to rear elevation and door giving access to the rear of the property.

Cellar / Bedroom Three

Window to front and side aspect, power and lighting with central heating radiator.

First Floor Landing

Ceiling light point and loft access.



Bedroom One

Bay window to front aspect, built in wardrobes, central heating radiator, ceiling light point with an open feature fireplace.

Bedroom Two

Window to rear aspect, central heating radiator, ceiling light point.

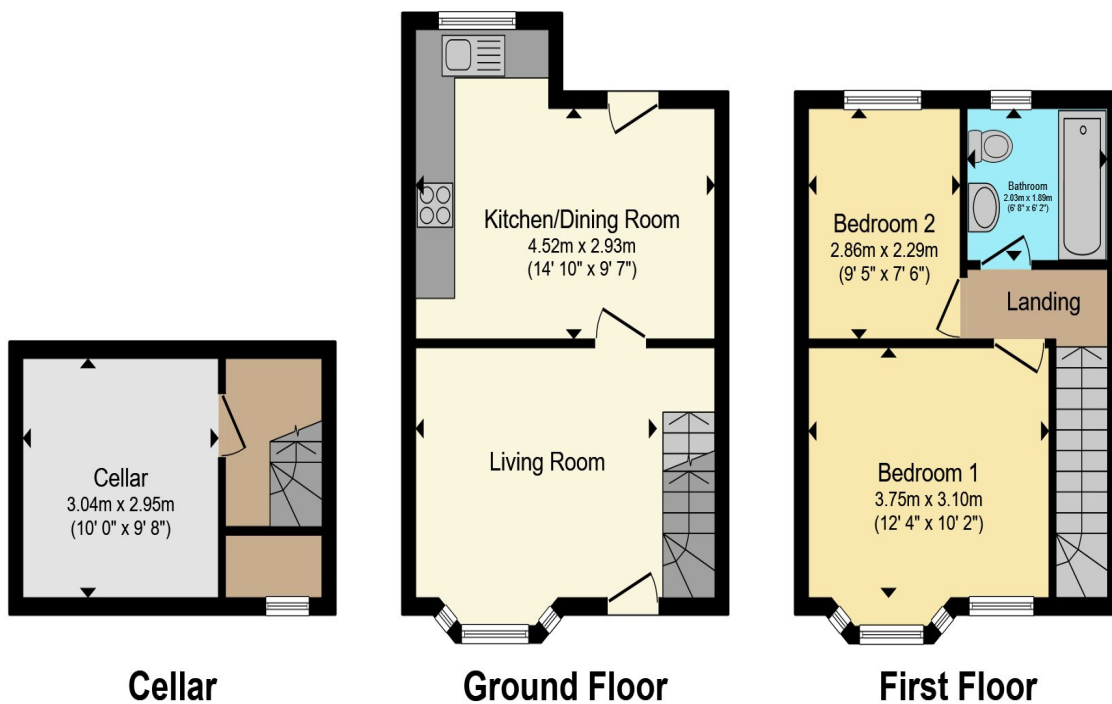
Bathroom

Suite briefly comprising of bath with mixer taps and overhead shower, wash hand basin, WC, storage cupboard, central heating radiator, ceiling light point, and window to rear aspect.

Rear Garden

Laid mainly to lawn, two patio areas with a storage shed and fences and hedges to surround the borders with side and rear access back to the front of the property.





Total floor area 72.4 m² (779 sq.ft.) approx

This floor plan is for illustrative purposes only. It is not drawn to scale. Any measurements, floor areas (including any total floor area), openings and orientation are approximate. No details are guaranteed, they cannot be relied upon for any purpose and they do not form part of any agreement. No liability is taken for any error, omission or misstatement. A party must rely upon its own inspection(s). Powered by www.propertybox.io

Connells

To view this property please contact Connells on

T 01432 267 511
E hereford@connells.co.uk

23 King Street
HEREFORD HR4 9BX

Property Ref: HER316245 - 0002

Tenure:Freehold EPC Rating: D

Council Tax Band: B

check out more properties at connells.co.uk



1. MONEY LAUNDERING REGULATIONS Intending purchasers will be asked to produce identification documentation at a later stage and we would ask for your co-operation in order that there will be no delay in agreeing the sale. 2. These particulars do not constitute part or all of an offer or contract. 3. The measurements indicated are supplied for guidance only and as such must be considered incorrect. Potential buyers are advised to recheck measurements before committing to any expense. 4. We have not tested any apparatus, equipment, fixtures, fittings or services and it is in the buyers interest to check the working condition of any appliances.

Connells Residential is registered in England and Wales under company number 1489613, Registered Office is Cumbria House, 16-20 Hockliffe Street, Leighton Buzzard, Bedfordshire, LU7 1GN. VAT Registration Number is 500 2481 05.

see all our properties at www.connells.co.uk | www.rightmove.co.uk | www.zoopla.co.uk